

# SAWBELLY-1 SYNTHETIC TRACE No. 1 : ZERO PHASE, 47 Hz

QUIKLOG REV: 1.2 1987  
SIERRA GEOPHYSICS, INC.  
28-JUN-90 07:50  
SAWBELLY-1



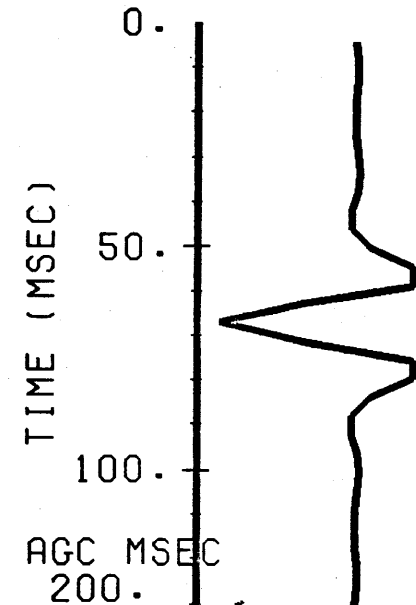
COMMENTS  
1. SONIC LOG IS SCHLUMBERGER'S DRIFT CORRECTED DT  
2. DEPTHS: 21.0 TO 3070 M  
3. AUTHOR: KEN GRIEVES

\*\*\*\*\* WELL LOG DESCRIPTION \*\*\*\*\*

KELLY BUSHING HEIGHT = 21.0 METERS ABOVE SEA LEVEL  
GROUND ELEVATION = 0.000 METERS ABOVE SEA LEVEL  
SEISMIC DATUM = 0.000 METERS ABOVE SEA LEVEL  
STARTING DEPTH = 21.0 METERS  
ENDING DEPTH = 0.307E+04 METERS  
SAMPLED DEPTH INTERVAL = 0.200 METERS

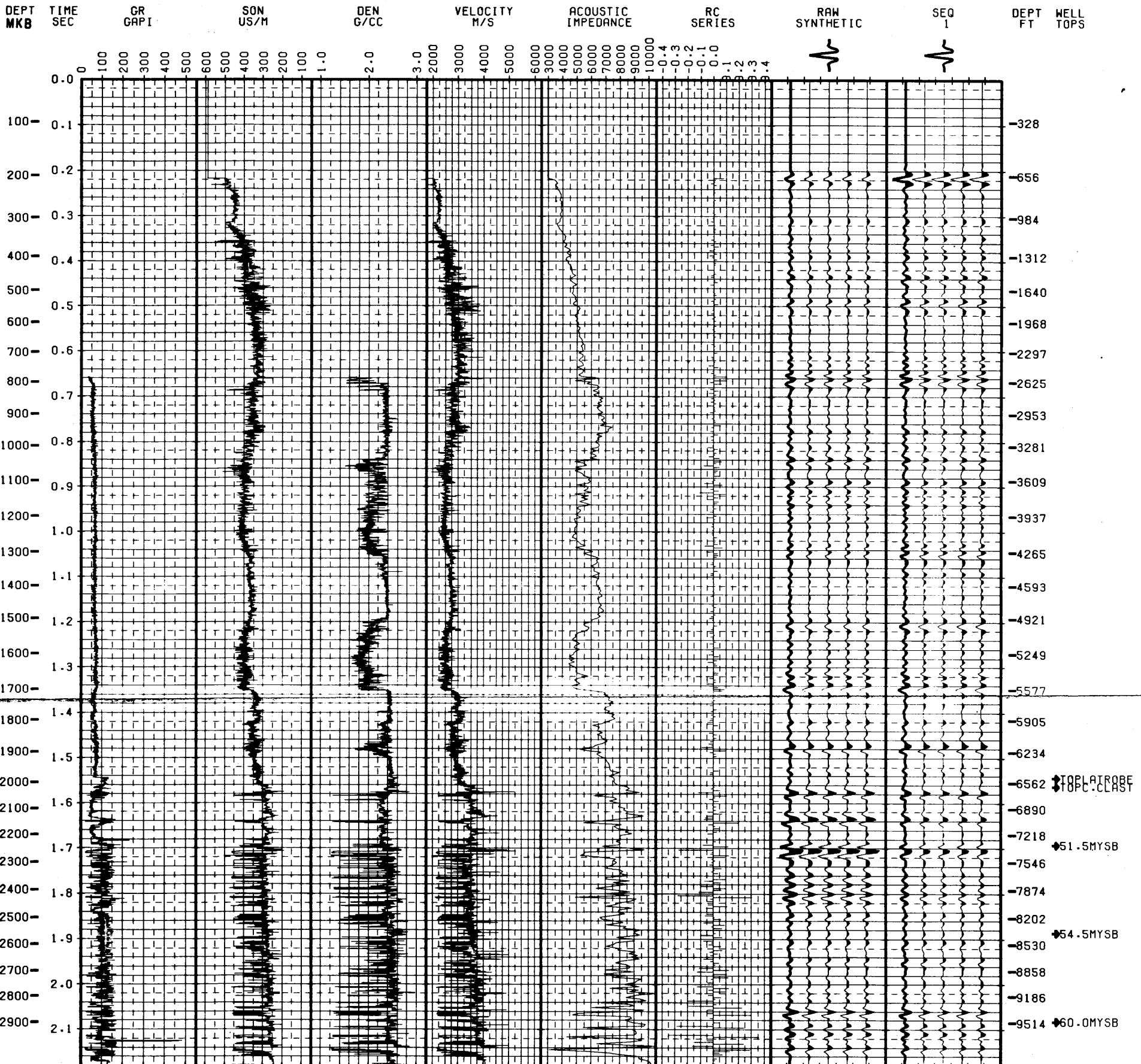
\*\*\*\*\* PROCESSING SEQUENCE \*\*\*\*\*

DENSITY MODEL = DENSITY CURVE  
WAVELET TYPE = RICKER (ZERO-PHASE)  
WAVELET LENGTH = 124. MSEC  
WAVELET MAX. AMP. = 0.42  
WAVELET MIN. AMP. = -1.00  
WAVELET CENTER FREQUENCY = 47.0 HZ  
POLARITY = NEGATIVE  
CLIPPING LEVEL = 1.5000  
TRACE OVERLAP = 1.5000  
WHITE NOISE PERCENTAGE = 0.0  
MULTIPLES INCLUDED = NO  
SEQ FILTER CORNER FREQUENCIES TOLERANCES  
1 NO FILTER AGC MSEC 200.



\*\*\*\*\* PLOTTING PARAMETERS \*\*\*\*\*

TIME SAMPLE INTERVAL = 4.00 MSEC  
HORIZONTAL SCALE = 2.00 INCH/LOG  
VERTICAL SCALE = 10.00 CM/SEC  
STARTING TIME = 0.000 MSEC  
ENDING TIME = 0.218E+04 MSEC



Enclosure 7a

DWG. 2462/OP/7

2462/OP/7