

SAWBELLY-1

SYNTHETIC TRACE NO.2 : 90° PHASE SHIFTED ZERO PHASE, 47Hz

QUIKLOG REV: 1.2 1987
 SIERRA GEOPHYSICS, INC.
 28-JUN-90 07:58
 SAWBELLY-1



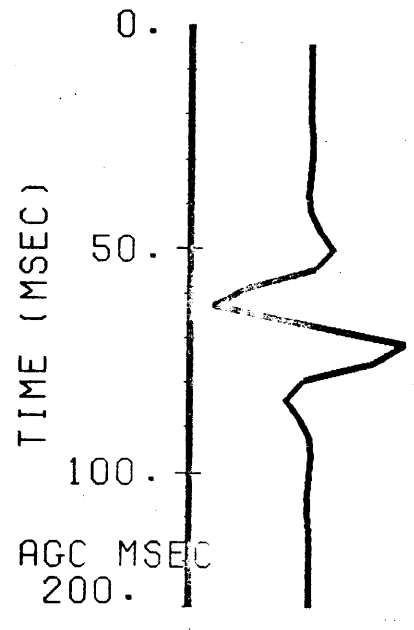
COMMENTS
 1. SONIC LOG IS SCHLUMBERGER'S DRIFT CORRECTED DT
 2. DEPTHS: 21.0 TO 3070 M
 3. AUTHOR: KEN GRIEVES

***** WELL LOG DESCRIPTION *****

KELLY BUSHING HEIGHT = 21.0 METERS ABOVE SEA LEVEL
 GROUND ELEVATION = 0.000 METERS ABOVE SEA LEVEL
 SEISMIC DATUM = 0.000 METERS ABOVE SEA LEVEL
 STARTING DEPTH = 21.0 METERS
 ENDING DEPTH = 0.307E+04 METERS
 SAMPLED DEPTH INTERVAL = 0.200 METERS

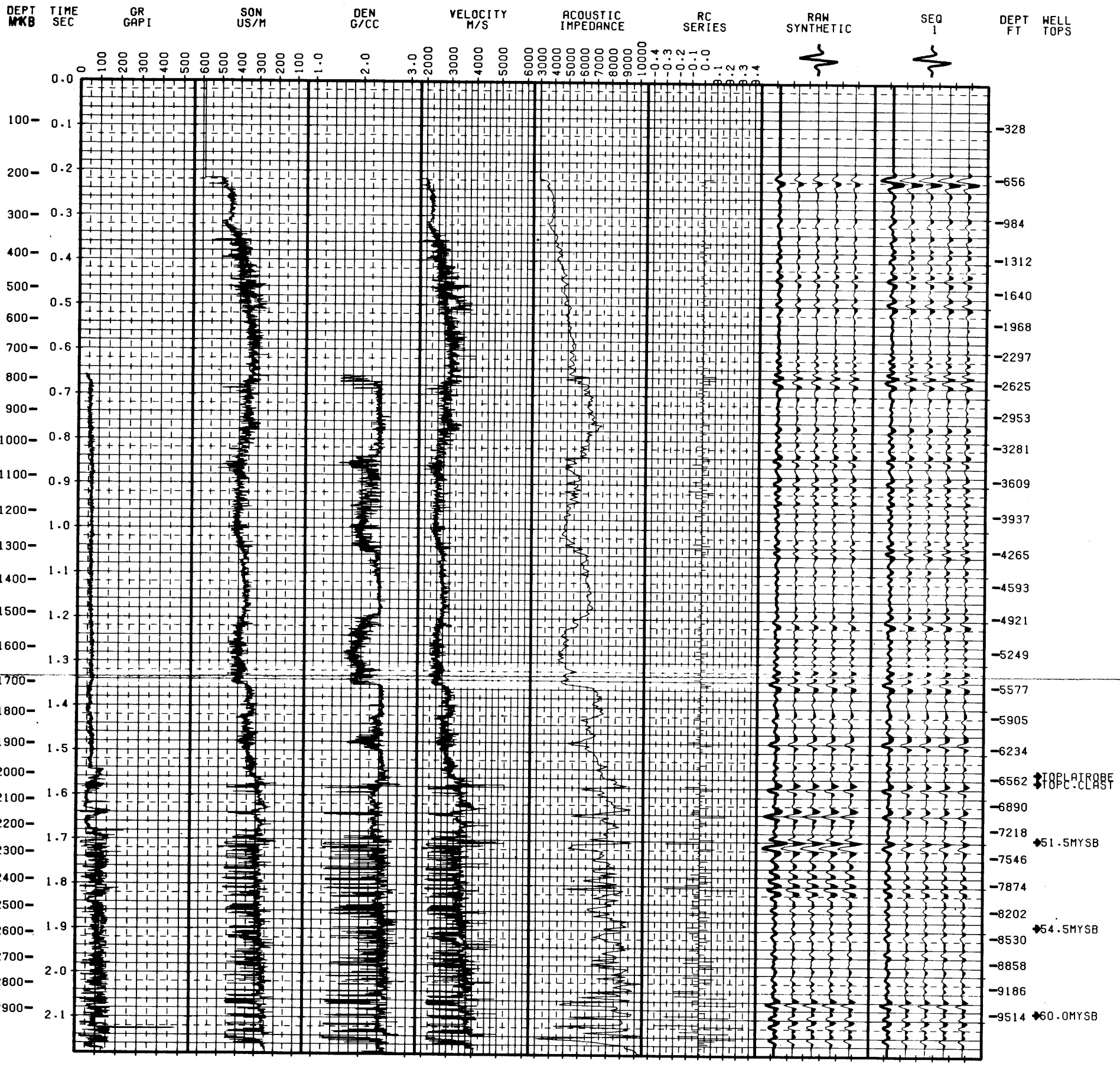
***** PROCESSING SEQUENCE *****

DENSITY MODEL = DENSITY CURVE
 WAVELET TYPE = RICKER (ZERO-PHASE)
 WAVELET LENGTH = 124. MSEC
 WAVELET MAX. AMP. = 1.00
 WAVELET MIN. AMP. = -1.00
 WAVELET CENTER FREQUENCY = 47.0 HZ
 POLARITY = NEGATIVE
 CLIPPING LEVEL = 1.5000
 TRACE OVERLAP = 1.5000
 WHITE NOISE PERCENTAGE = 0.0
 MULTIPLES INCLUDED = NO
 SEQ FILTER CORNER FREQUENCIES TOLERANCES
 1 NO FILTER



***** PLOTTING PARAMETERS *****

TIME SAMPLE INTERVAL = 4.00 MSEC
 HORIZONTAL SCALE = 2.00 INCH/LOG
 VERTICAL SCALE = 10.00 CM/SEC
 STARTING TIME = 0.000 MSEC
 ENDING TIME = 0.218E+04 MSEC



Enclosure 7b

DWG. 2462/OP/8

8/20/1990