



**EXPLORATION LOGGING**  
**DRILLING RATE AND DATA**  
 FT/HR  
 MIN/FT  
 VISUAL POROSITY  
 GD FAIR TR

400 300 200 100  
 1 3/8" CSG LANDED  
 AT 2253'

4,23,460  
 NOV 5 REED T3J

DEPTH  
 CORE TEST  
 2300  
 2400  
 2500  
 2600  
 2700

LITHOLOGY

OIL  
 TRACE  
 GD TRACE  
 FAIR  
 GOOD  
 V. GOOD

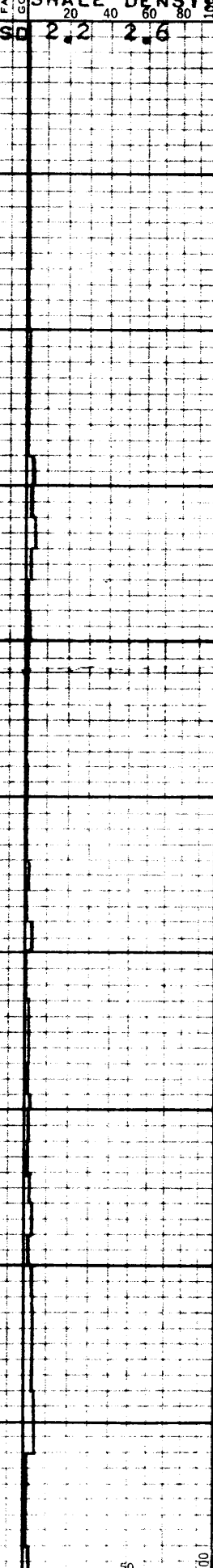
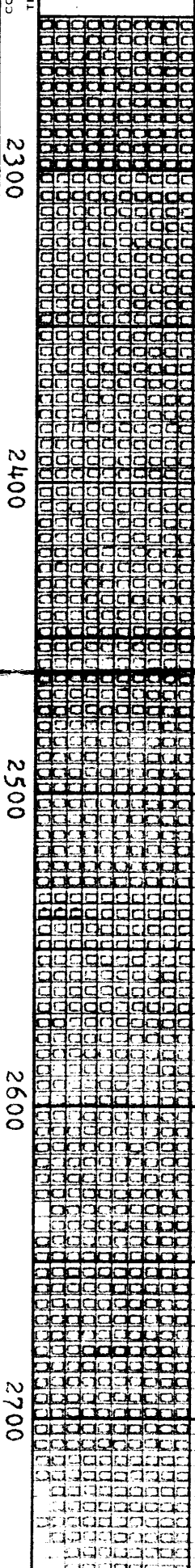
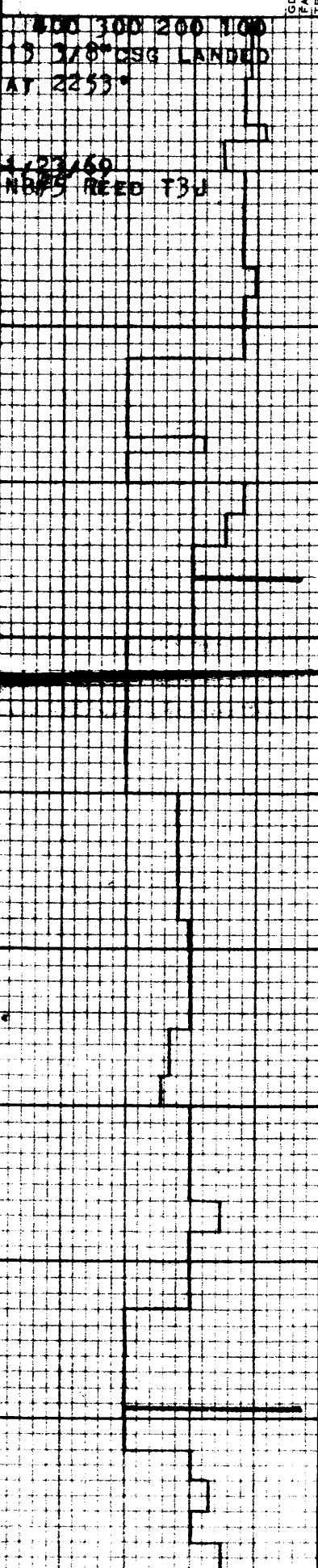
DRILLING MUD

CONTINUOUS DITCH GAS  
 OIL IN MUD  
 TR. X  
 FAIR XX  
 GD. XXX  
 TOTAL GAS (BACKUP SCALE = 10X)  
 PETROL VAP  
 CHROMATOGRAPHIC ANALYSIS  
 METHANE  
 ETHANE  
 PROPANE  
 BUTANES  
 PENTANES  
 M: 1000  
 CO<sub>2</sub>

CUTTINGS

GAS  
 TOTAL GAS (BACKUP SCALE = 10X)  
 PETROL VAP  
 SHALE DENSITY

REMARKS AND LITHOLOGY DESCRIPTION



CHROMAT CALIBRATION  
 JAN 22 BY WATT  
 GAS PPM PER UNIT  
 C1 10  
 C2 3  
 C3 5  
 C4 9  
 C4N 12  
 C02 120

LIMESTONE: LIGHT GREY FOSSILIFEROUS, GLAUCONITIC

LIMESTONE: AS ABOVE, BECOMING MORE MARLY

MARL: LIGHT GREY, VERY FOSSILIFEROUS  
 DECREASING MARL

INCREASING MARL

LIMESTONE: AS ABOVE, WITH SOME DENSER STRATA AND SCATTERED QUARTZ GRAINS

MARLY STREAK

DECREASING MARL, INCREASING FOSSILS

INCREASING MARL