

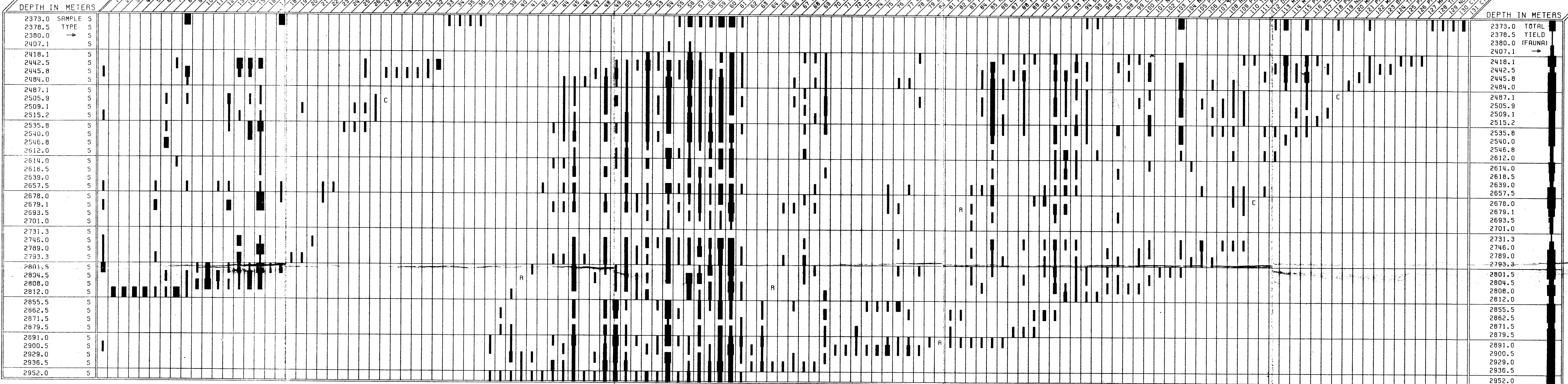
PALYNOLOGICAL RANGE CHART ROUNDHEAD-1, GIPPSLAND BASIN.

DEPT. NAT. RES & ENV
PE900459

SPECIES

LEGEND

VERY RARE
RARE
FEW
COMMON
ABUNDANT
VERY ABUNDANT
P PRESENT
R REMOVED
C CONTAMINANT



DEPTH IN METERS

Table with 2 columns: Depth (meters) and Total Yield (Fauna). The depth column ranges from 2373.0 to 2952.0 in 1.5m increments. The total yield column shows a significant increase in yield starting around 2801.5 meters, reaching a peak of approximately 100 units at 2804.5 meters.