

SEISMOGRAPH SERVICE (ENGLAND) LTD.

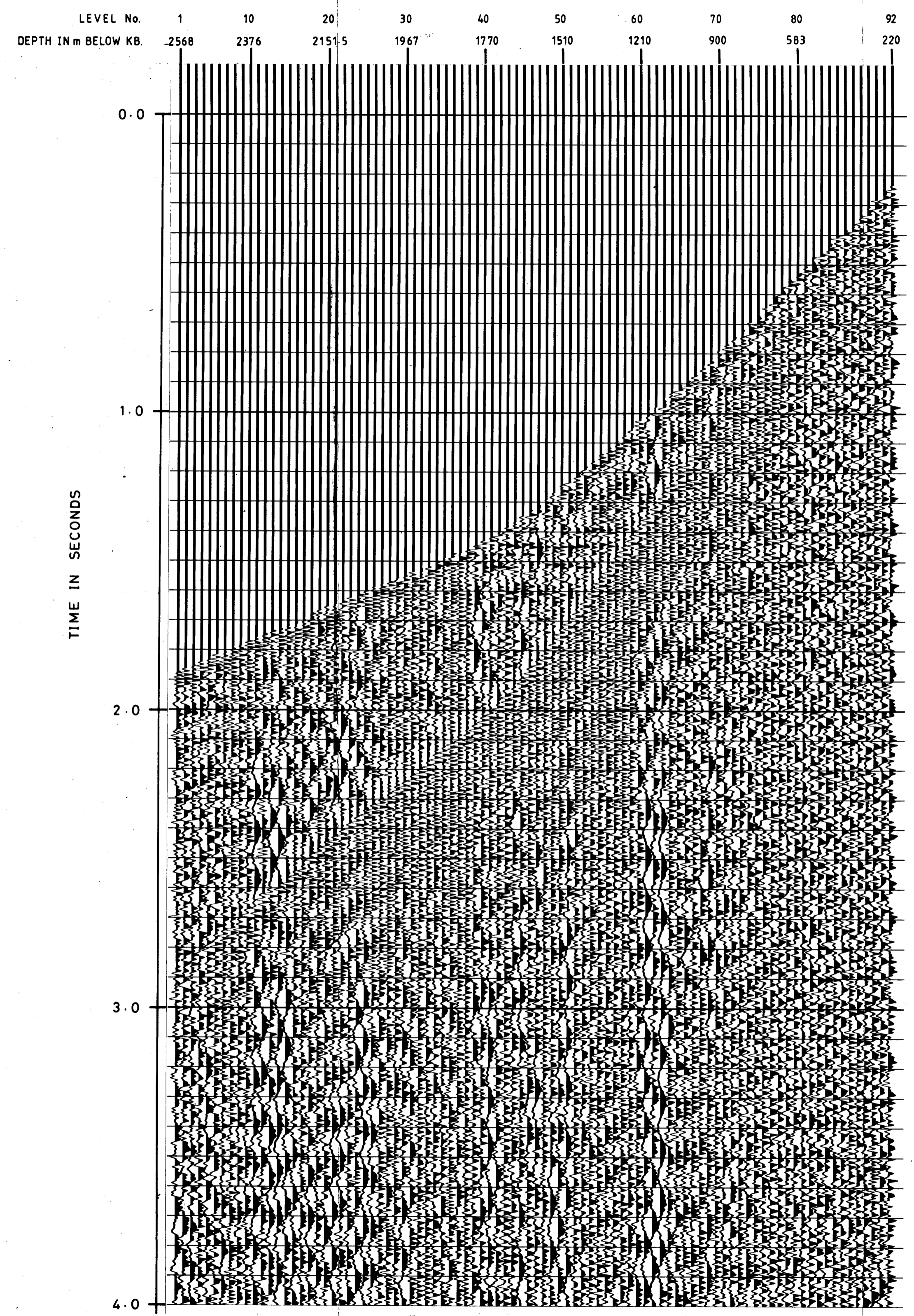
COMPANY : UNION TEXAS AUSTRALIA INC.
 WELL : PISCES NO. 1
 LOCATION : 39° 03' 37.055" S
 148° 30' 41.270" E
 DISPLAY : VSP UPGOING EVENTS
 SPECIAL VSP DECONVOLUTION
 (POLARITY 2)
 TIME SCALE : 1 S = 3.75 IN
 DEPTH SCALE : 10 TRACES/INCH
 DATE PROCESSED : AUGUST 1982

FIELD ACQUISITION
 SURVEY DATE : 9TH MAY 1982
 SOURCE : 40 CU. IN SINGLE BOLT AIRGUN
 SOURCE DEPTH : 15.2 M
 GUN PRESSURE : 2000 PSI
 SOURCE MONITOR : NEAR FIELD HYDROPHONE
 MONITOR DEPTH : 48.3 M
 WELL GEOPHONE : WS
 RECORDING EQUIPMENT : DIGITAL CART.
 SAMPLE INTERVAL : 1 MS
 SURFACE ELEVATION : MSL
 WATER DEPTH : 122 M
 VSP DATUM : MSL

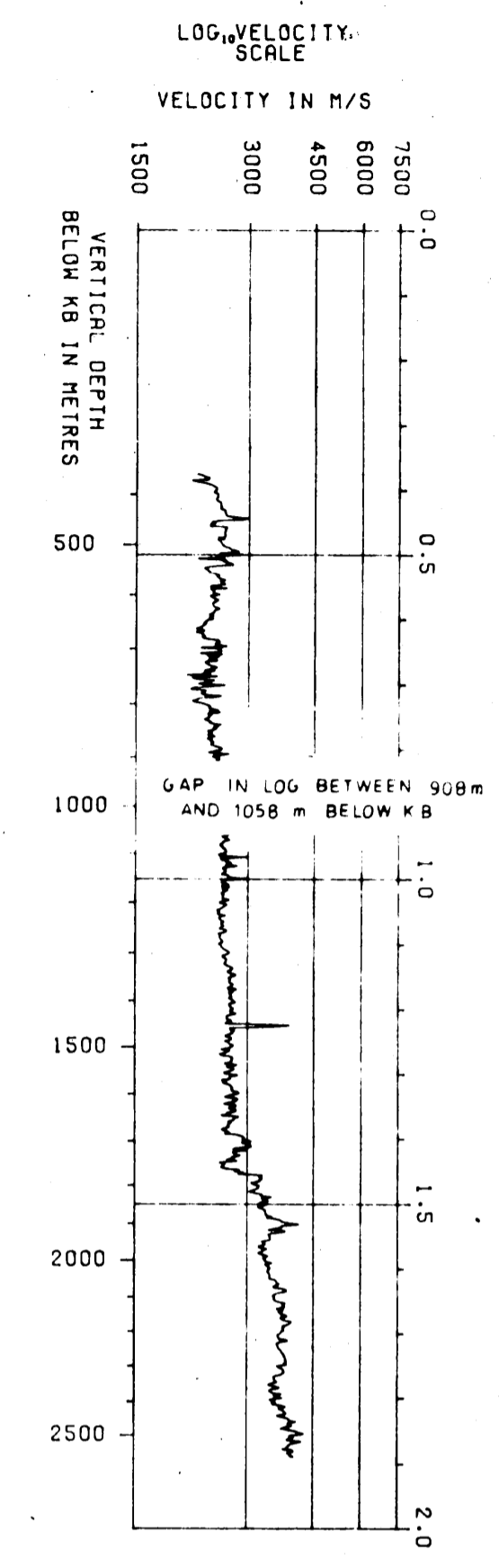
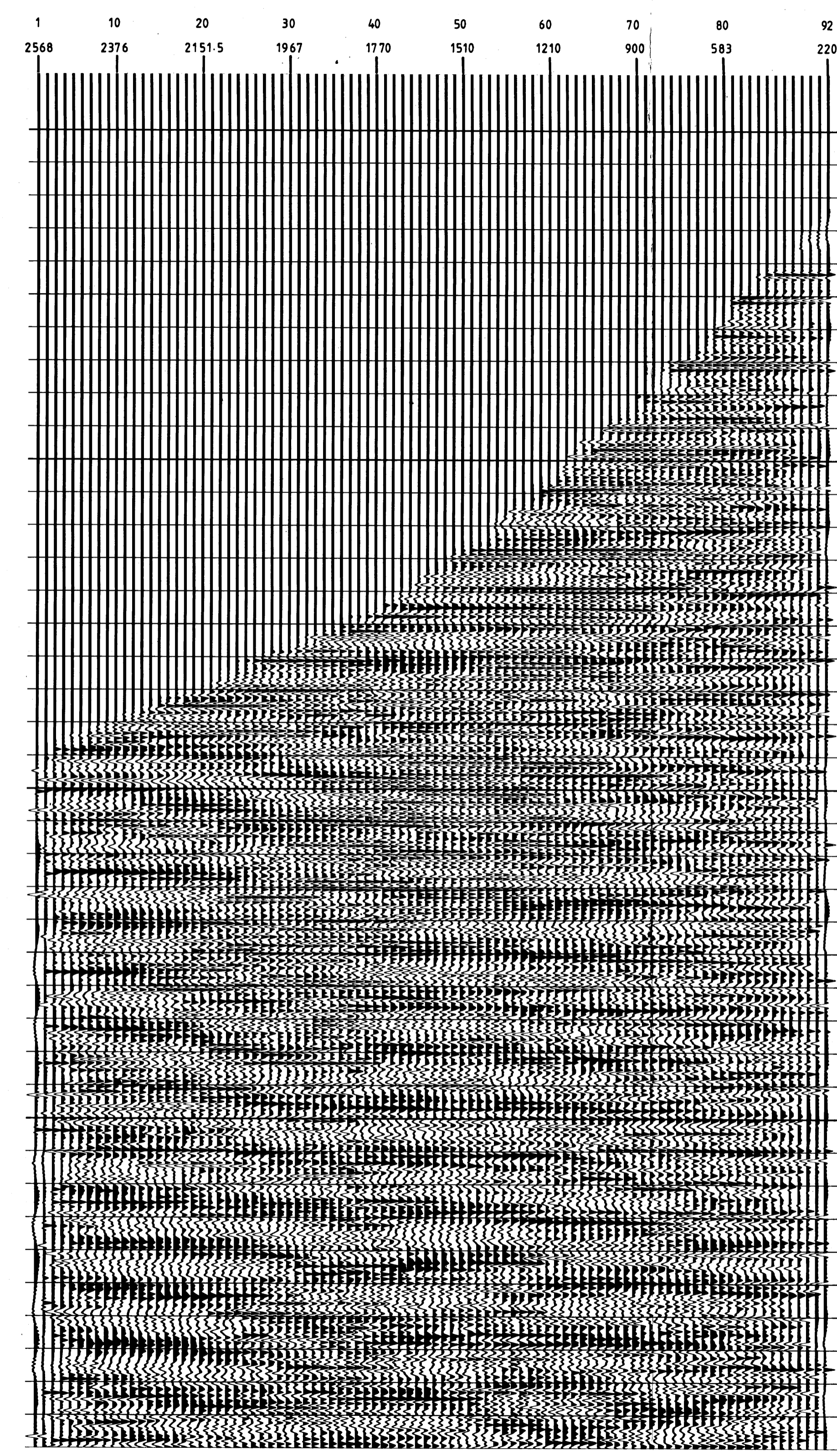
PROCESSING SEQUENCE
 S1. EDIT
 AUTOMATED TRACE ALIGNMENT
 VERTICAL STACK OF CONSTANT DEPTH TRACES
 SOURCE SIGNATURE DECONVOLUTION (300MS DERIVATION WINDOW)
 AMPLITUDE RECOVERY T=1.0
 FIRST ARRIVALS SHIFTED TO TWO-WAY TIME SUB DATUM
 DOWNGOING WAVE SUBTRACTION
 SPECIAL VSP DECONVOLUTION (590 MS DERIVATION WINDOW)
 BAND PASS FILTER 1-5.80-100HZ
 S2. AS FOR S1 PLUS
 13:1 MEDIAN PICK
 BAND PASS FILTER 1-5.80-100 HZ
 S3. AS FOR S2 EXCEPT
 BAND PASS FILTER 1-5 80-100 HZ REPLACED BY
 TIME VARIANT FILTER
 BEFORE AND AFTER MEDIAN PICK
 TIME VARIANT FILTER (FROM SEISMIC SECTION LINE GC80-11A)
 AT 0.16 S 15 - 65 HZ
 AT 0.56 S 13 - 65 HZ
 AT 1.16 S 12 - 55 HZ
 S1-S3. TRACE EQUALISATION (100 MS WINDOW, 50 MS OVERLAP)
 PRIOR TO DISPLAY

POLARITY 2 :
 AN UPGOING COMPRESSION WAVE IS REPRESENTED BY A BLACK PEAK
 THE DOWNGOING FIRST ARRIVAL COMPRESSION WAVE IS A WHITE TROUGH

S1



S2



S3

