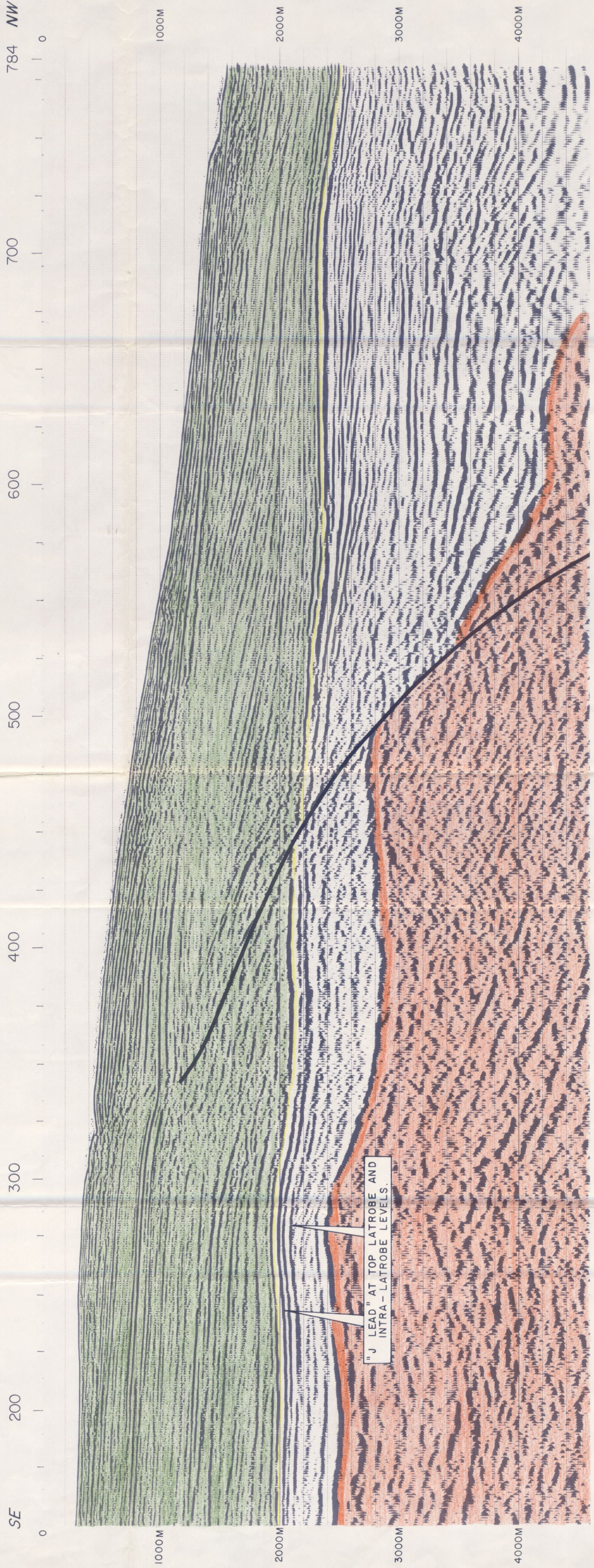
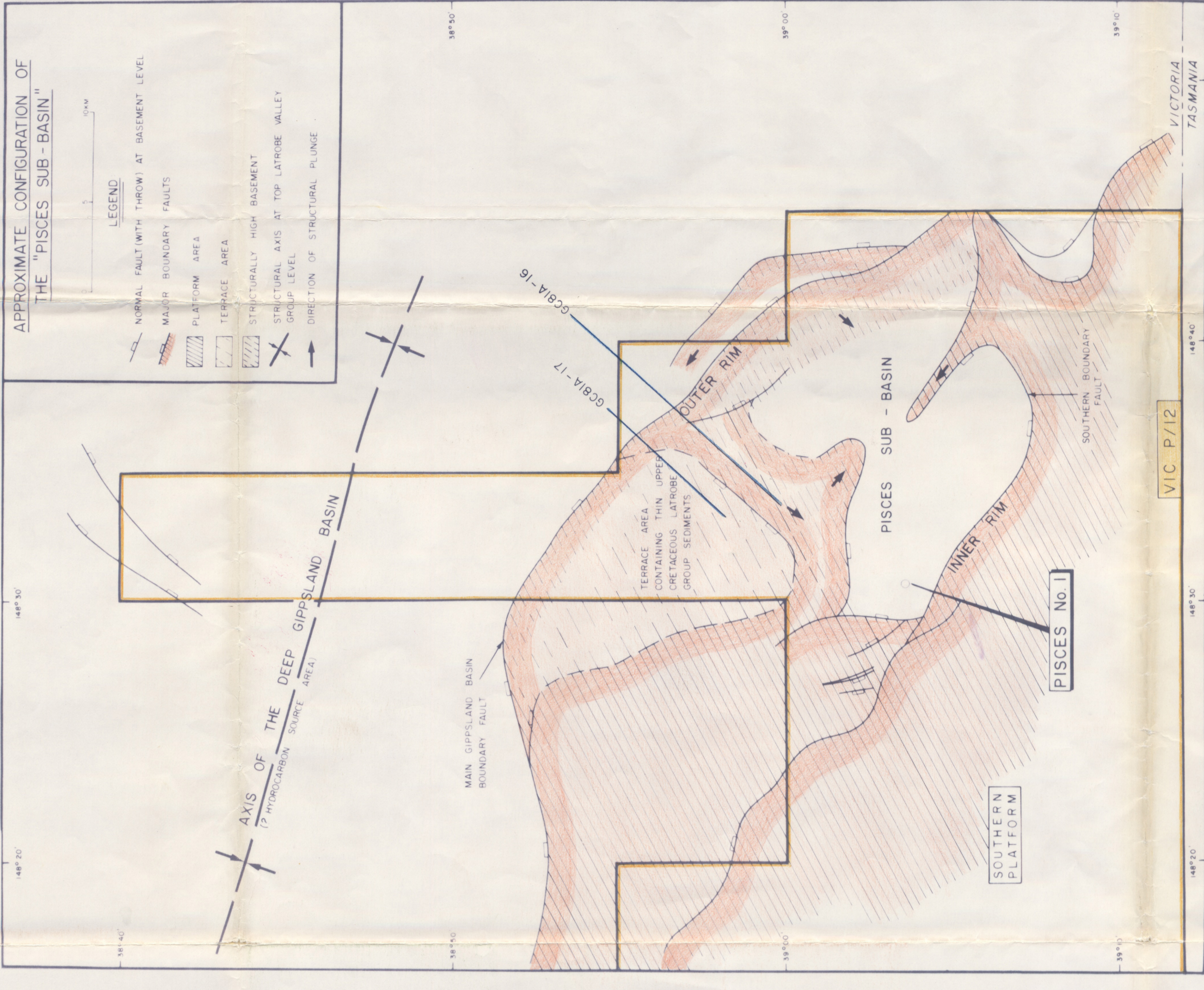


SEISMIC LINE GC 81A-16 : DEPTH MIGRATED SECTION



SEISMIC LINE GC 81A-17 : DEPTH MIGRATED SECTION



**CONFIDENTIAL**

ALLIED Corporation

UNION TEXAS AUSTRALIA INC.

ENCLOSURE 3

THE EXISTENCE AND CONFIGURATION OF THE OUTER RIM OF THE "PISCES SUB-BASIN"

OIL and GAS DIVISION

PAGES - 1 - GEOLOGICAL EVALUATION REPORT  
28 JUL 1982