

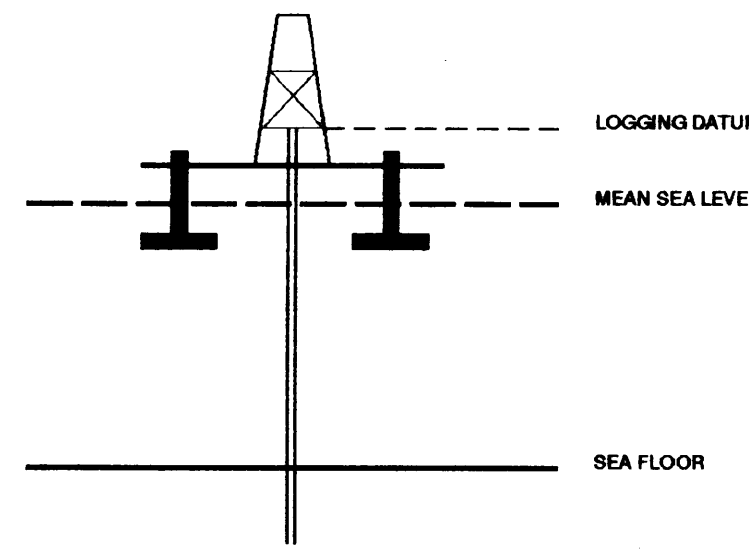
SEISMIC CALIBRATION LOG

(Adjusted Continuous Velocity Log)



Company: ESSO AUSTRALIA LTD.
Well: ORANGE ROUGHY 1
Field: WILDCAT
Country: AUSTRALIA
Reference No: SYJ.561133/561134 Interval: 2614.00 to 164.00
Date Logged: 27-JUNI-1995 Date Processed: 21-JULY-1995
Location: 038 34' 56.99" S 148 02' 30.99" E
Elevations: KB: 25.00 DF: 24.70 GL: -75.00
Permanent Datum: MSL Depth Units: METRES
FIELD RECORDING: Engineer: P.M. LUBRANO Location: VEA Program Version: 700-427
COMPUTATION: Analyst: A. WIBISONO Centre: SYJ Baseline: 20.5

ELEVATION ABOVE MEAN SEA LEVEL
Logging Datum: 25.00
Seismic Reference Datum: 0.00



Total Number of Levels: 38
Depth Reference: SRD
Time Reference: SRD

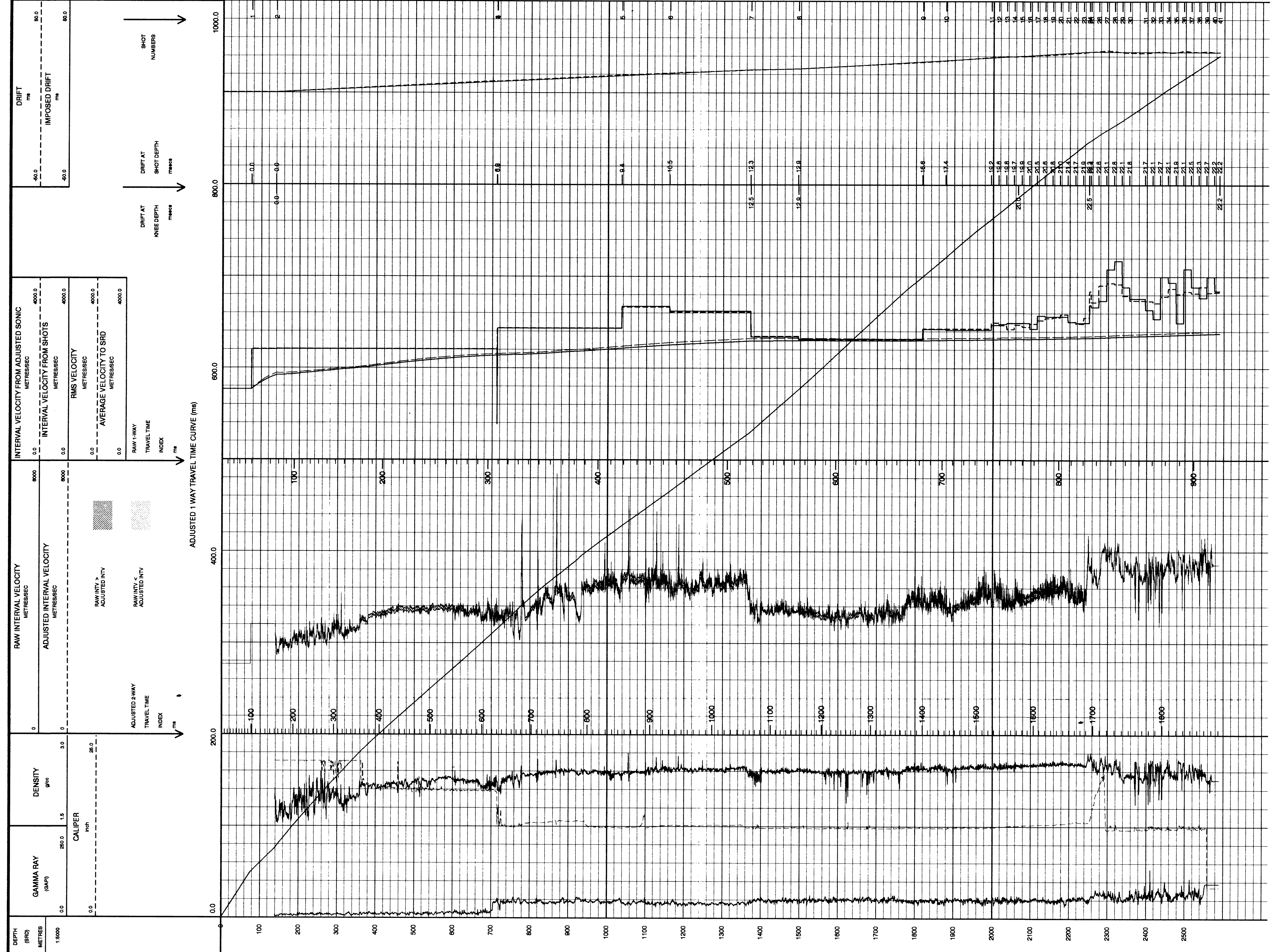
Run	Date	Tool Type	Bit Size/Depth	Casing Size/Depth	Top Depth	Bottom Depth
ONE	18-JUN-1995	AS-LDL	17.5 IN		82 M	753 M
TWO	26-JUN-1995	DLL-LDL-AS	12.25 IN		741 M	2805 M

VSP Run	Date	Gun Offset	Hydro Offset	Gun Elevation	Hydro Elevation	Gun Azimuth	Hydro Azimuth
ONE	27-06-1996	50 M	50 M	5 M BELOW MSL	10 M BELOW MSL	248 DEG	248 DEG

The well name, location and location reference data were furnished by the customer.

All interpretations are opinions based on information from electrical or other measurements and we cannot and do not guarantee the accuracy or completeness of any interpretation, and we shall not, except in the case of gross or willful negligence on our part, be liable or responsible for any loss, costs, damages or expenses incurred or sustained by anyone resulting from any interpretations made by any of our officers, agents or employees. These interpretations are also subject to change at our General Terms and Conditions as set out in our current Price Schedule.

FOLD HERE



COMPANY: ESSO AUSTRALIA LTD.
FIELD: WILDCAT
WELL: ORANGE ROUGHY 1
COUNTRY: AUSTRALIA

