

ENCLOSURE 4A

G88AW-150  
CDPS 399-708



DEPT. NAT. RES & ENV  
PE906008

ESSO AUSTRALIA LTD.  
WHIPTAIL 3D SURVEY

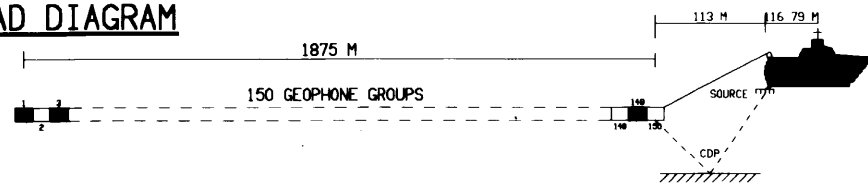


FD MIGRATION

FIELD DATA

DATA SHOT BY - G.S.I. PARTY 2993 M.V. MAGNIFICENT CREEK  
 DATE SHOT - JUNE 1988  
 RECORDING INSTRUMENTS - TITAN 1000  
 RECORDING FILTERS - HIGH-CUT FILTER AND SLOPE 180 HZ \* 72 DB/OCTAVE  
 LOW-CUT FILTER AND SLOPE 8 HZ \* 18 DB/OCTAVE  
 RECORDING POLARITY - A POSITIVE PRESSURE AT THE HYDROPHONE  
 PRODUCES A NEGATIVE NUMBER ON TAPE  
 DIGITAL TAPE FORMAT - SEG 0 6250 BP1  
 RECORD LENGTH / SAMPLE RATE - 3.0 SECONDS AT 2 MILLISECOND SAMPLE RATE  
 ENERGY SOURCE - 2180 CU IN VXS SLEEVE AIRGUN ARRAY  
 OPERATING AT 1950 PSI  
 51.2 MILLISECONDS  
 GUN DELAY - 1.986  
 SOURCE DEPTH - 5 METRES AVERAGE  
 SOURCE TO ANTENNA DISTANCE - 116.79 METRES  
 SHOTPOINT INTERVAL - 25.00 METRES  
 STREAMER LENGTH - 1950 METRES 150 GROUPS 12.50 M GROUP INTERVAL  
 STREAMER TYPE - DIGITAL FIBRE OPTIC  
 STREAMER DEPTH - 6 METRES AVERAGE  
 COVERAGE - 75 FOLD 150 TRACE  
 SYLDEIS (42.7 MHZ)  
 PRIMARY NAVIGATION SYSTEM - TRANSIT SATELLITE  
 BACKUP NAVIGATION SYSTEM - TRANSIT SATELLITE

SPREAD DIAGRAM



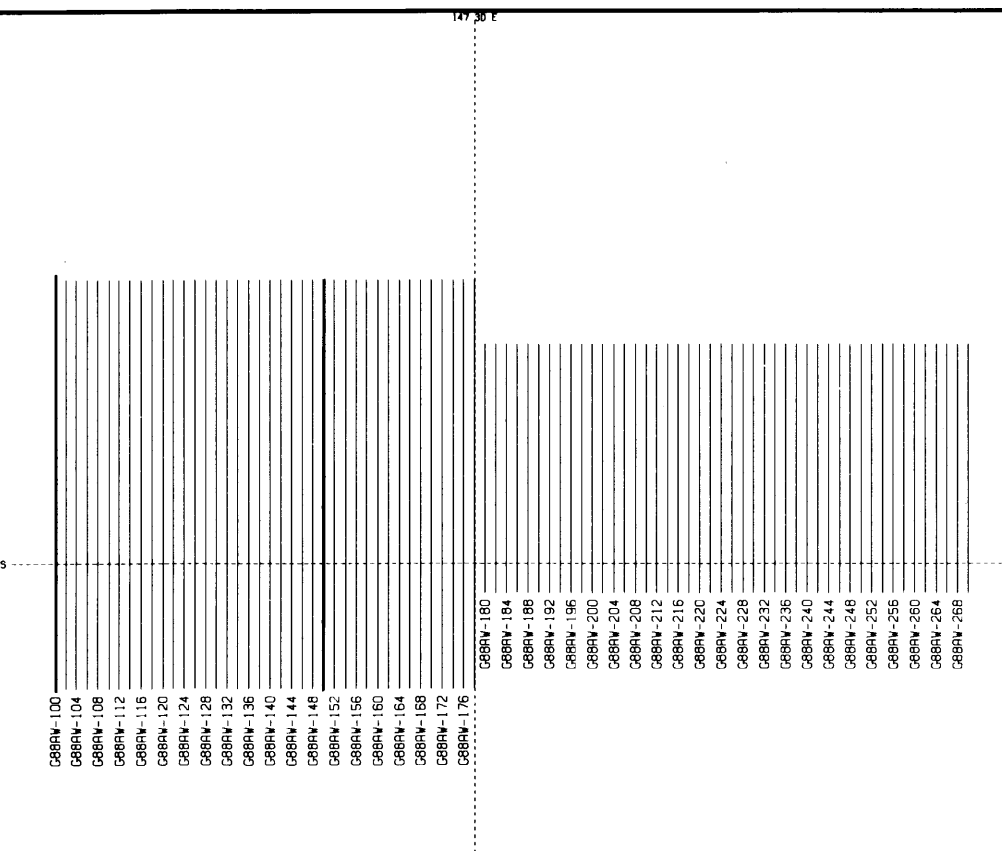
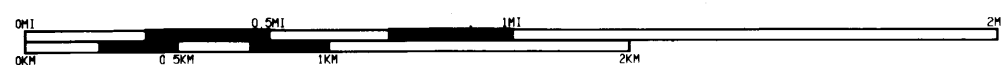
DIGITAL PROCESSING

POLARITY CONVENTION - THE POLARITY OF THE FIELD RECORDING WAS MAINTAINED THROUGHOUT THE PROCESSING AND DISPLAY  
 PROCESSING RECORD LENGTH - 3.0 SECONDS  
 SAMPLE RATE - 200.0 HZ  
 STATIC CORRECTIONS - AIRGUN DELAY - 51.2 MSEC  
 AMPLITUDE RECOVERY (TAR) - 5.0 DB PER S FROM 0 TO 3.0 S  
 SPHERICAL DIVERGENCE CORRECTIONS APPLIED  
 RAMP LENGTH 100 MS  
 OFFSETS (M) : 244 300 2007  
 START TIMES (MS) : -150 220 1509  
 VELOCITY FILTERING (V6) - APPLIED IN SHOT RECORD DOMAIN WITH FULL COSINE RAMPS - 7 SV - 3.0 MS/TRACE  
 DESIGNATURE (V6) - STANDARD WAVELETS. FMAX=125 HZ  
 SMASH - 2.1 ADJACENT TRACE SMASH  
 VELOCITY ANALYSIS - USING 11 DEPTH POINT VELSCAN ANALYSIS LOCATED EVERY 500 M  
 DEMULTIPLE (15 PERCENT) - HORIZONTAL CUT-OFF VELOCITY IN NEGATIVE F-K QUADRANT 80000 M/S  
 USING 11 DEPTH POINT VELSCAN ANALYSIS LOCATED EVERY 500 M  
 VELOCITY ANALYSIS - VELOCITIES AS ANNOTATED  
 NORMAL MOVEOUT CORRECTION - SHOT & STREAMER STATIC CORRECTIONS  
 SSD CORRECTIONS - 1500 MS GATES  
 INSIDE-TRACE MUTING - RAMP LENGTH 96 MS  
 OFFSETS (M) : 144 523 525  
 START TIMES (MS) : 700 1600 3000  
 FIRST BREAK SUPPRESSION - RAMP LENGTH 96 MS  
 OFFSETS (M) : 244 300 2007  
 START TIMES (MS) : -150 220 1509  
 COMMON DEPTH POINT STACK - 30 BINNED STACK  
 LOCATION CORRECTIONS - 10 GEOMETRIC BIN CENTRE  
 INTERPOLATION - 1.2 CROSSLINE INTERPOLATION (CDP MODE)  
 MIGRATION - FINITE DIFFERENCE MIGRATION (2 PASS)  
 45 DEGREE ALGORITHM 36 MS TIMESTEP  
 TRANSMISSION COMPENSATION - TCOMP TAUMIN/MAX : 20/120  
 TIME VARIANT FILTERING - FREQUENCY (HZ) (5.11, 95.105) TIME (MS) 1500  
 (5.11, 95.105) 3000  
 TIME VARIANT SCALING - 200 MS GATE LOGARITHMIC SCALING

DISPLAY

HORIZONTAL SCALE - 125.000 M / CM  
 VERTICAL SCALE - 20.000 CM/SEC  
 POLARITY - NORMAL  
 TRACE TYPE, BIAS - UTVAR, 5 PERCENT  
 DATUM - SEA LEVEL  
 DISPLAY UNIT - 0.967618 CM

DISPLAY GAIN	
CDP	INPUT
GAIN	TIME
08	MSEC
82 0	0



31 DEC 1988

PARTY 6860



GEOPHYSICAL SERVICE INC  
(A HALLIBURTON COMPANY)



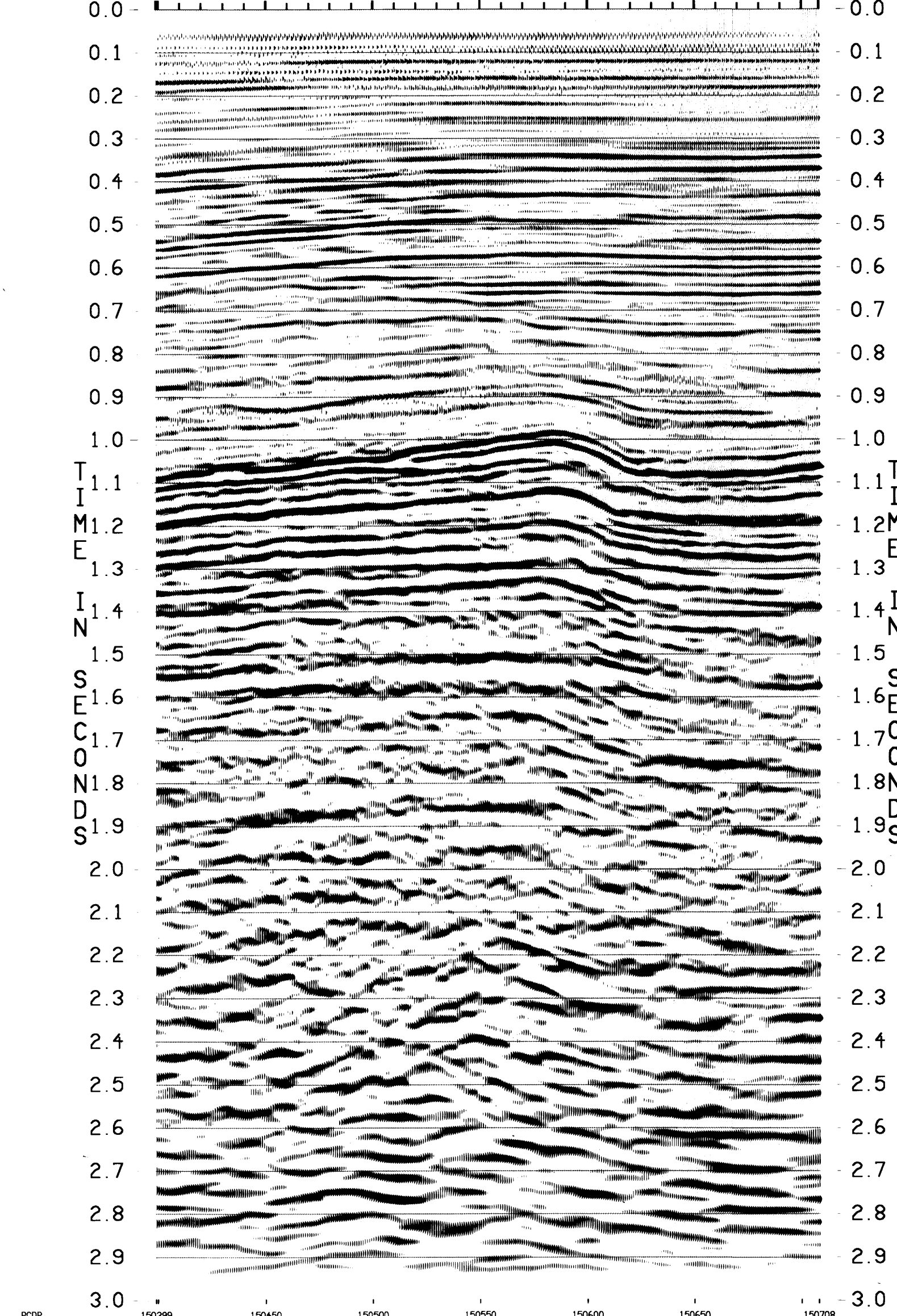
PROCESSING CHECKED BY -

CDP	TIME	TIME	TIME	TIME	TIME	TIME	TIME	TIME	TIME
150400	150440	150480	150520	150560	150600	150640	150680	150720	150760
SPN	SPN	SPN	SPN	SPN	SPN	SPN	SPN	SPN	SPN
TIME	TIME	TIME	TIME	TIME	TIME	TIME	TIME	TIME	TIME
MSEC	MSEC	MSEC	MSEC	MSEC	MSEC	MSEC	MSEC	MSEC	MSEC
48	46	48	46	46	46	45	45	44	44
372	216	650	216	280	217	241	216	249	216
915	2278	525	2270	515	2262	499	2257	492	2252
687	2418	843	2410	638	2417	625	2422	628	2423
816	2495	788	2485	763	2479	751	2481	767	2484
987	2608	927	2600	808	2496	687	2496	672	2501
1061	2521	1049	2513	1022	2509	1003	2509	980	2511
1198	2558	1176	2550	1161	2551	1142	2554	1124	2558
1360	2637	1338	2629	1321	2629	1307	2635	1294	2643
1561	2816	1541	2817	1523	2817	1499	2821	1488	2825
1800	3285	1777	3287	1760	3292	1741	3295	1724	3297
2088	374	2063	3758	2046	3773	2031	3787	2016	3797

X LINES

LINE  
CDP

38 38 37 37 37 36 35  
 150 150 150 150 150 150 150  
 399 450 500 550 600 650 708



PCDP

150399 150450 150500 150550 150600 150650 150708

X LINES

LINE  
CDP

0.0 0.1 0.2 0.3 0.4 0.5 0.6 0.7 0.8 0.9 1.0 1.1 1.2 1.3 1.4 1.5 1.6 1.7 1.8 1.9 2.0 2.1 2.2 2.3 2.4 2.5 2.6 2.7 2.8 2.9 3.0

PCDP

FD MIGRATION

G88AW-150  
CDPS 399-708

ESSO AUSTRALIA LTD.  
WHIPTAIL 3D SURVEY

FD MIGRATION

G88AW-150  
CDPS 399-708

ESSO AUSTRALIA LTD.  
WHIPTAIL 3D SURVEY