

GEOGRAM*

(Synthetic Seismogram)



* A Mark of Schlumberger

Company: ESSO AUSTRALIA LTD
 Well: MULLOWAY #1
 Field: WILDCAT
 Country: AUSTRALIA
 Reference No: SYJ-56913 Interval: 169000 to 180000
 Date Logged: 19-FEB-89 Date Processed: 10-MAR-89
 Location: 038 19' 27.46" S 147 29' 01.82" E
 Elevations: KB: 2100 DE: 2070 GL: -3700
 Permanent Datum: MSL Depth Units: METRES

LOG INFORMATION
 FIELD RECORDING: Engineer: Y. GZHANG Location: 281882
 COMPUTER: Analyst: M. SANDERS Centre: SYJ Baseline: 1690002
 ELEVATION ABOVE MEAN SEA LEVEL
 Logging Datum: 2100
 Sismic Reference Datum: 000
 Sonic Calibration by Check Shots: YES Sonic Edited by Analyst: YES
 Two-Way Time Sample Interval: 2 ms Environment: onshore

True Vertical Depth Corrections Applied
 Source of True Vertical Depth Data:
 Maximum Hole Deviation:

Run	Date	Tool Type	Bit Size/Depth	Casing Size/Depth	Top Depth	Bottom Depth
1	19-FEB-89	Gun Offset	40 M	4 M BELOW HSE	9 M BELOW HSE	

Equal time slice model of horizontal plane layers
 Plane acoustic waves at normal incidence
 No intrinsic attenuation

POLARITY
 An upgoing wave, reflected by an increase in acoustic impedance with depth, is displayed as a white trough under normal polarity.

SIGNATURES
 All signatures displayed in the Geogram results correspond to a wavelet convolved with a reflection coefficient of -0.5 (A decrease in acoustic impedance with depth).

REMARKS

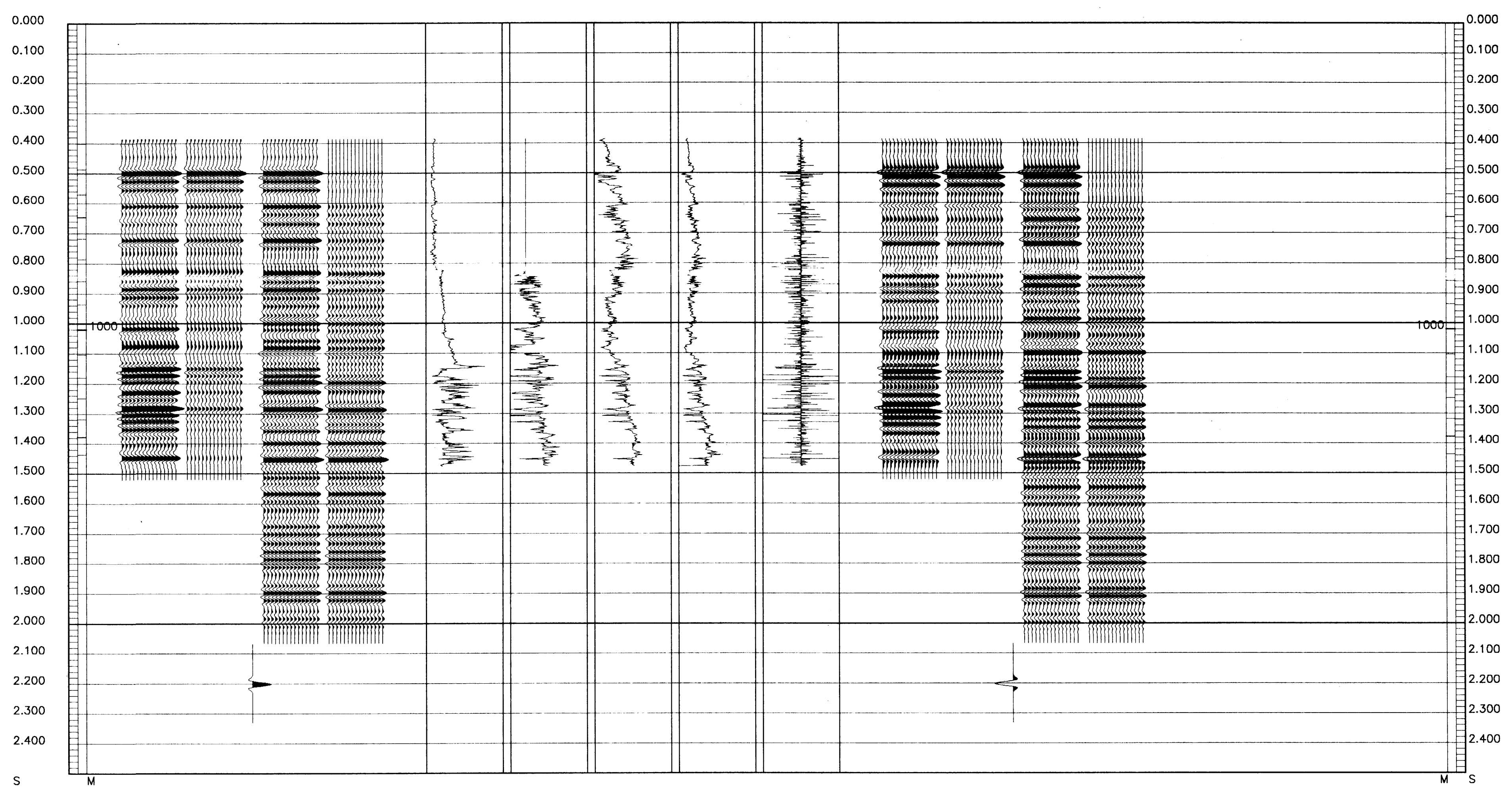
25 Hertz Zero Phase

The well name, location and borehole reference data were furnished by the customer.

All interpretations are opinions based on inferences from electrical or other measurements and we cannot, and do not guarantee the accuracy or correctness of any interpretations, and we shall not, except in the case of gross or willful negligence on our part, be liable or responsible for any loss, costs, damages or expenses incurred or sustained by anyone resulting from any interpretations made by any of our officers, agents or employees. These interpretations are also subject to Clause 4 of our General Terms and Conditions as set out in our current Price Schedule.

** GEOGRAM **
 25 HERTZ ZERO PHASE
 RICKER WAVELET
 MULLOWAY - 1

MULTIPLES ONLY REVERSE POLARITY	0.200
PRIMARIES AND MULTIPLES REVERSE POLARITY	-0.200
PRIMARIES WITH TRANSMISSION LOSS REVERSE POLARITY	50000.000 TSPC
PRIMARIES REVERSE POLARITY	100.000 US/M
ACUSTIC IMPEDANCE	500.000 US/M
SONIC	2.800 G/CS
DENSITY	1.800 G/CS
GAMMA RAY	200.000 GPH
	0.000 GPH
MULTIPLES ONLY NORMAL POLARITY	
PRIMARIES AND MULTIPLES NORMAL POLARITY	
PRIMARIES WITH TRANSMISSION LOSS NORMAL POLARITY	
PRIMARIES NORMAL POLARITY	



COMPANY ESSO AUSTRALIA LTD
 FIELD WILDCAT
 WELL MULLOWAY #1
 COUNTRY AUSTRALIA

