

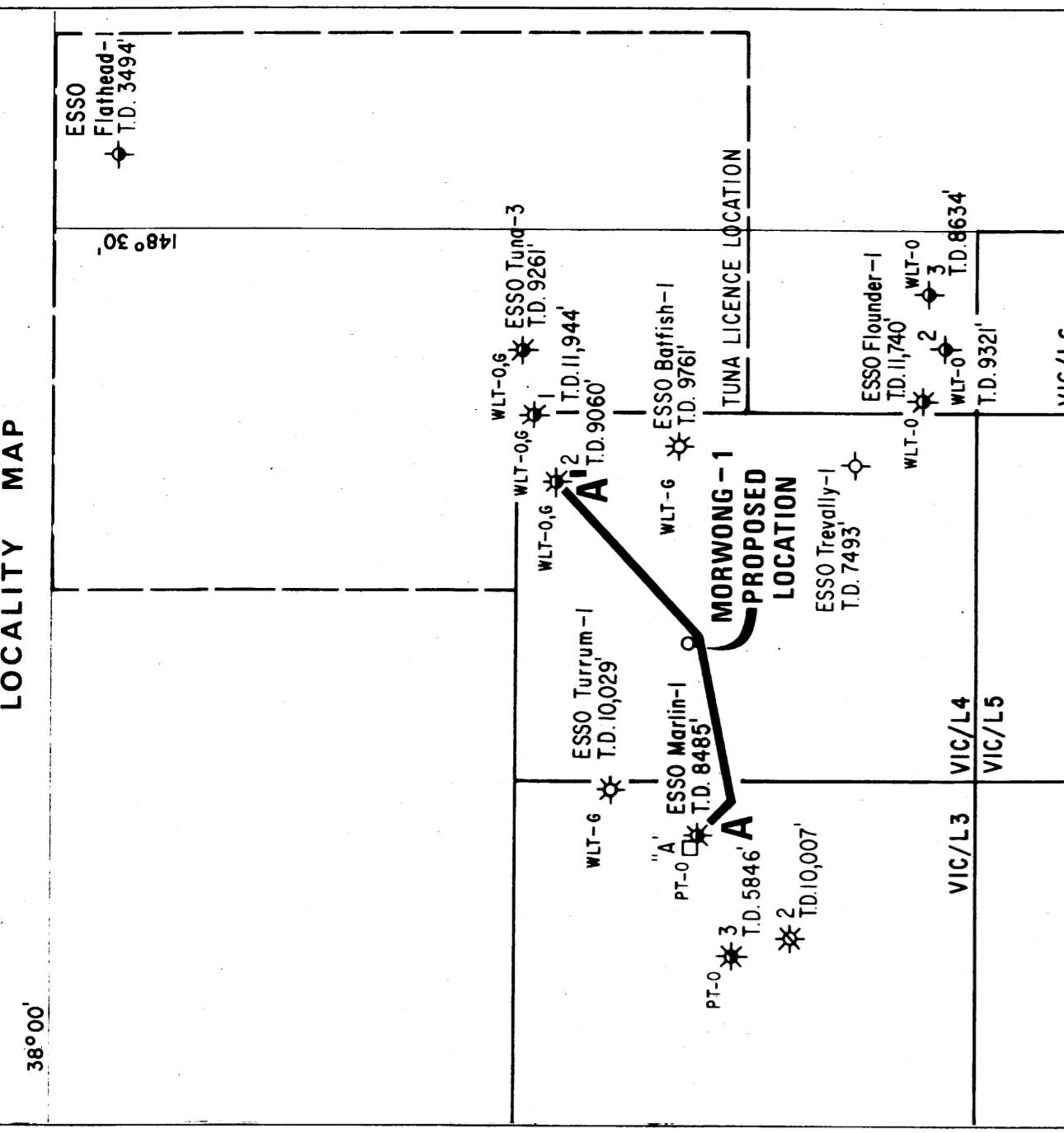
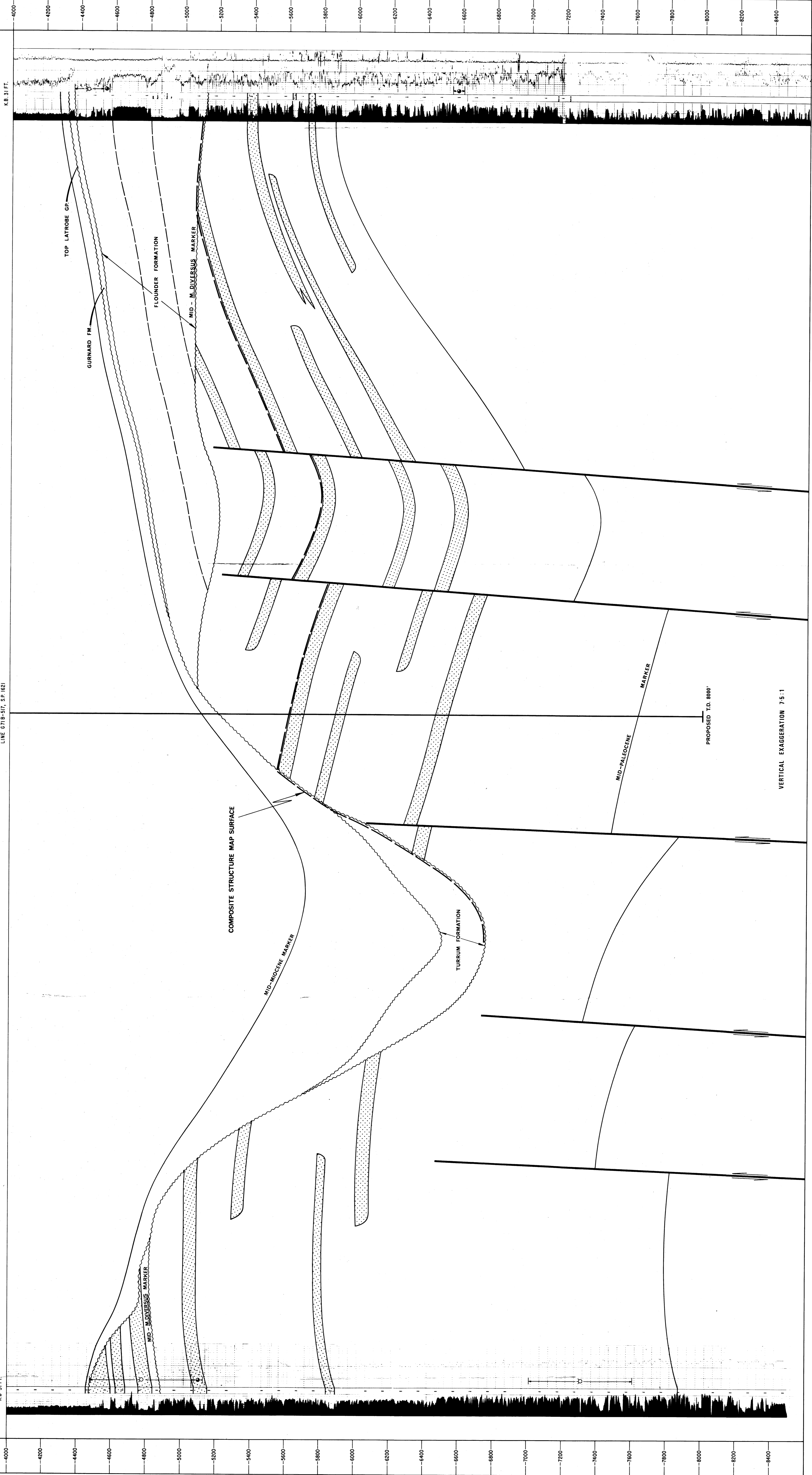
A WEST
ELEVATION (FEET)
K.B. 31 FT.

MARLIN-1
PT-0
K.B. 31 FT.

MORWONG-1 PROPOSED LOCATION
(OFFSET 850 FEET NORTH)
LINE 6718-517, S.P. 1621

A' EAST
ELEVATION (FEET)
K.B. 31 FT.

TUNA-2
WLT-05
K.B. 31 FT.



ESSO EXPLORATION AND PRODUCTION AUSTRALIA INC.
GIPPSLAND BASIN
VICTORIA
MORWONG PROSPECT
GEOLOGICAL CROSS SECTION A-A'
PRE DRILLING
Vertical Scale 1 inch = 200 feet
Horizontal Scale 1:118,000
Vertical Exaggeration 7.5:1
MILES
AUTHORS: W.F. THRELFALL, R.A. BROTHERTON
DRAFTED BY: J. COSENTINO
TO ACCOMPANY: APPLICATION TO DRILL MORWONG-1
DATE: NOV., 1972
Dwg. 1472/02/1