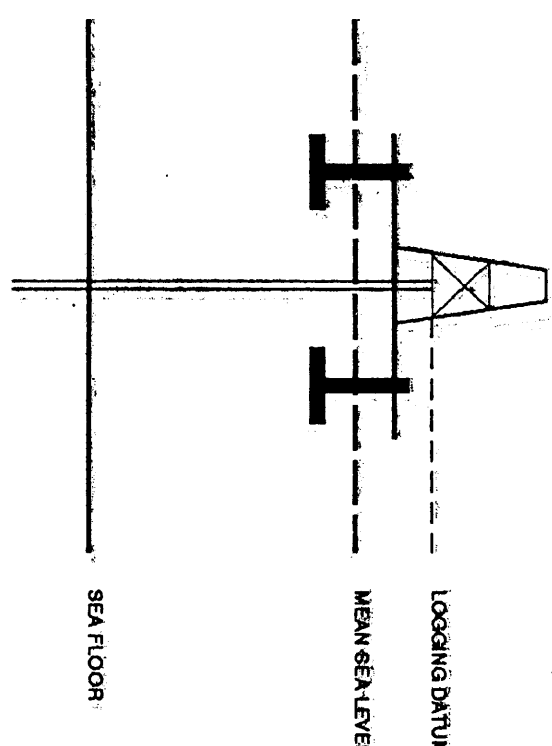


SEISMIC CALIBRATION LOG

(Adjusted Continuous Velocity Log)

DEPT. M.T. 463 & ENW RECORD 743

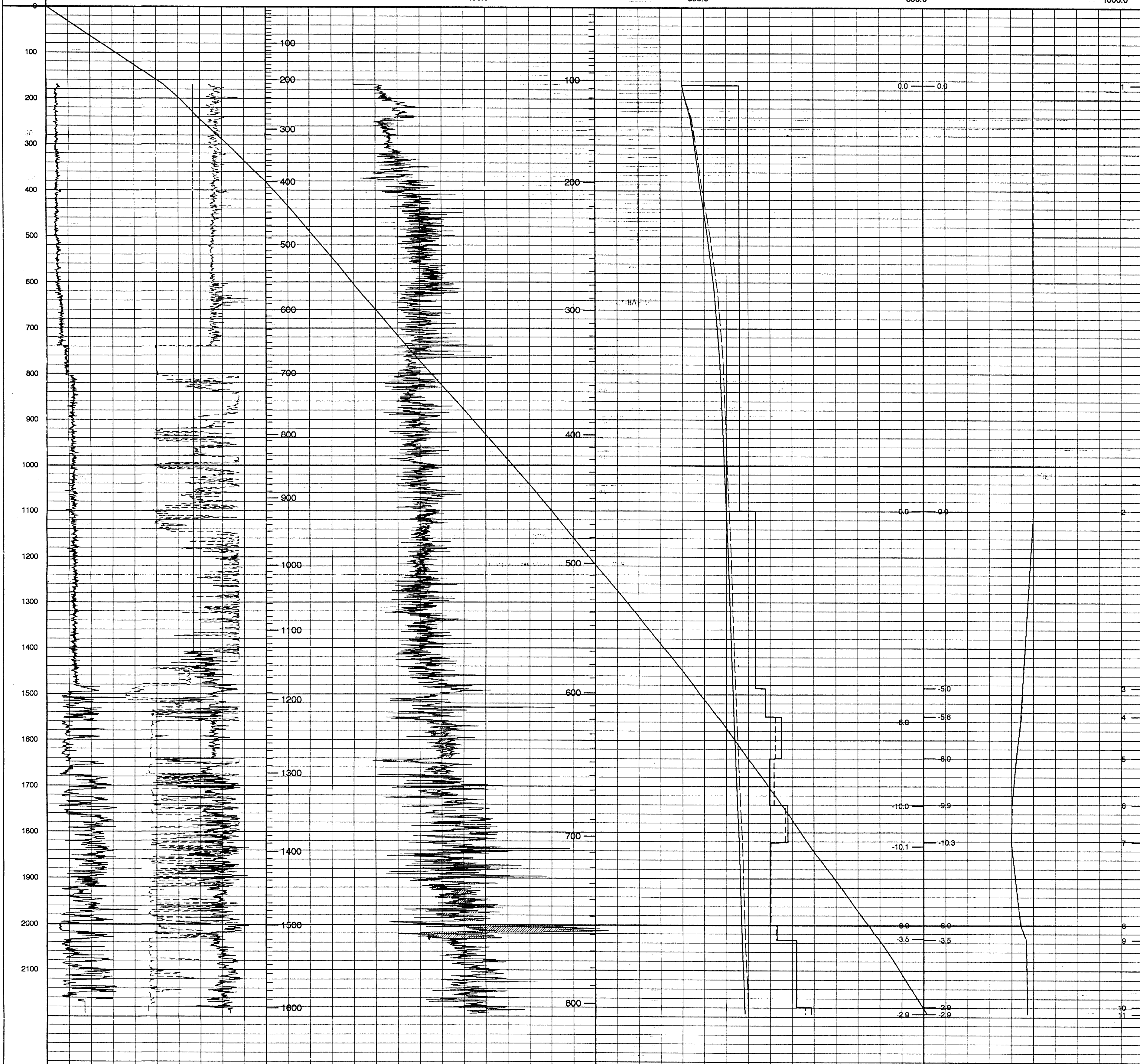
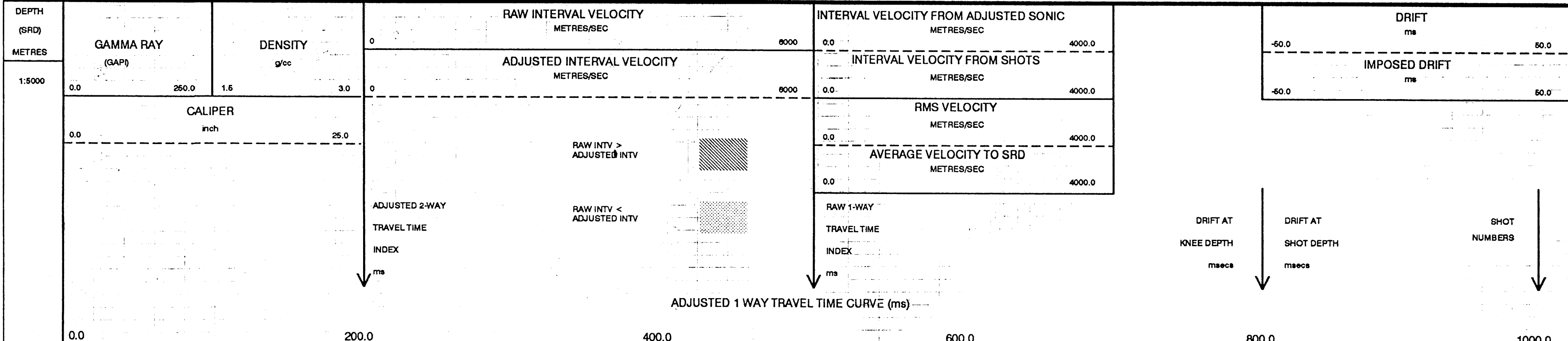
Company: ESSO AUSTRALIA LTD.
 Well: MOONFISH-2
 Field: MOONFISH
 Country: AUSTRALIA
 Reference No: 8715510811 Interval: 2296.00 to 200.00
 Date Logged: 19-JAN-1995 Date Processed: 09-JAN-1995
 Location: 008 08 57.699' S 148 01' 18.997' E
 Elevations: KB: 30.80 Df: 30.50 Qf: -33.90
 Permanent Datum: MSL Depth Units: METRES
 FIELD RECORDING: Engineer: RON JOHNSON Location: VFA Program Version: 700-427
 CONTINUATION: Analyst: A. WISSEMAN Core: 81Y Barium: 20.5
 Logging Datum: 30.80 ELEVATION ABOVE MEAN SEA LEVEL: Enclosure 4
 Scientific Reference Datum: 0.00



Total Number of Levels: 11
 Depth Reference SRD
 Time Reference SRD

Run	Date	Tool Type	SRD	SRD	SRD	SRD	SRD
ONE	21-12-1994	ASBH	17.5 M				
TWO	16-01-95	BLCH	12.25 M				
THREE	16-01-95	LD-CAL	12.25 M				
FOUR	16-01-95	GAN	GAN	GAN	GAN	GAN	GAN
FIVE	16-01-95	MOVING	MOVING	MOVING	MOVING	MOVING	MOVING
SIX	16-01-95	MOVING	MOVING	MOVING	MOVING	MOVING	MOVING
SEVEN	16-01-95	MOVING	MOVING	MOVING	MOVING	MOVING	MOVING
EIGHT	16-01-95	MOVING	MOVING	MOVING	MOVING	MOVING	MOVING
NINE	16-01-95	MOVING	MOVING	MOVING	MOVING	MOVING	MOVING
TEN	16-01-95	MOVING	MOVING	MOVING	MOVING	MOVING	MOVING
ELEVEN	16-01-95	MOVING	MOVING	MOVING	MOVING	MOVING	MOVING

All interpretations are opinions based on inferences from electrical or other measurements and we cannot, and do not guarantee the accuracy or correctness of any interpretations, and we shall not, except in the case of gross or willful negligence on our part, be liable or responsible for any loss, costs, damages or expenses incurred or sustained by anyone resulting from any interpretations made by any of our officers, agents or employees. These interpretations are also subject to Clause 4 of our General Terms and Conditions as set out in our current Price Schedule.



COMPANY ESSO AUSTRALIA LTD.
 FIELD MOONFISH
 WELL MOONFISH-2
 COUNTRY AUSTRALIA