

GEOGRAM*

(Synthetic Seismogram)

Company: B H P PETROLEUM
Well: LONGTOM-1
Field: WILDCAT
Country: AUSTRALIA
Reference No: SYL561117/561118
Date Logged: 26-MAY-1995
Location: 038 06' 00.03" S 148 18' 54.28" E
Elevations: KB: 25.30 DF: 25.00 GL: -56.25
Permanent Datum: MSL
35 Hz Zero Phase
Ricker wavelet

LOG INFORMATION

FIELD RECORDING: Engineer: R. JOHNSON Location: VEA Program Version: 703-427
ANALYST: Analyst: A. WISSONHO Core: STD Barium: 20.5
Logging Datum: ELEVATION ABOVE MEAN SEA LEVEL
25.00
Seismic Reference Datum: 0.00
Sonic Calibration by Check Shot: YES Sonic Edited by Analyst: YES
Two-Way Time Sample Interval: 1 ms Environment: YES

True Vertical Depth Corrections Applied: YES
Source of True Vertical Depth Data: Maximum Hole Deviation: 0

Run	Date	Tool Type	Bit Size Depth	Casing Size Depth	Top Depth	Bottom Depth	
ONE	16-06-1995	DLL-SLS	17.5 IN		80 M	705 M	
TWO	26-05-1995	DLL-LDL	12.25 IN		700 M	2237 M	
TYPE	Date	Case Open	Hydro Open	Case Sealment	Hydro Sealment	Case Arrest	Hydro Arrest
ONE	26-05-1995	80 M	50 M	6 M BELOW HBL	10 M BELOW HBL	67.0 DEG	67.0 DEG

GEOGRAM MODEL ASSUMPTIONS

Equal time slices model of horizontal plane layers.
Plane acoustic waves at normal incidence.
No intrinsic attenuation.
POLARITY
An upgoing wave, reflected by an increase in acoustic impedance with depth, is displayed as a white trough under normal polarity.
SIGNATURES
All signatures displayed in the Geogram results correspond to a wavelet convolved with a reflection coefficient of -0.5 (A decrease in acoustic impedance with depth).

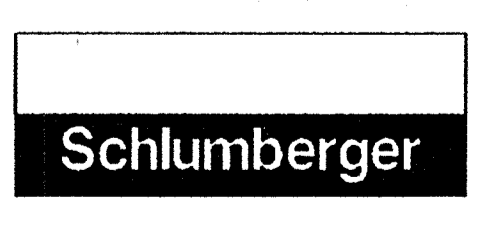
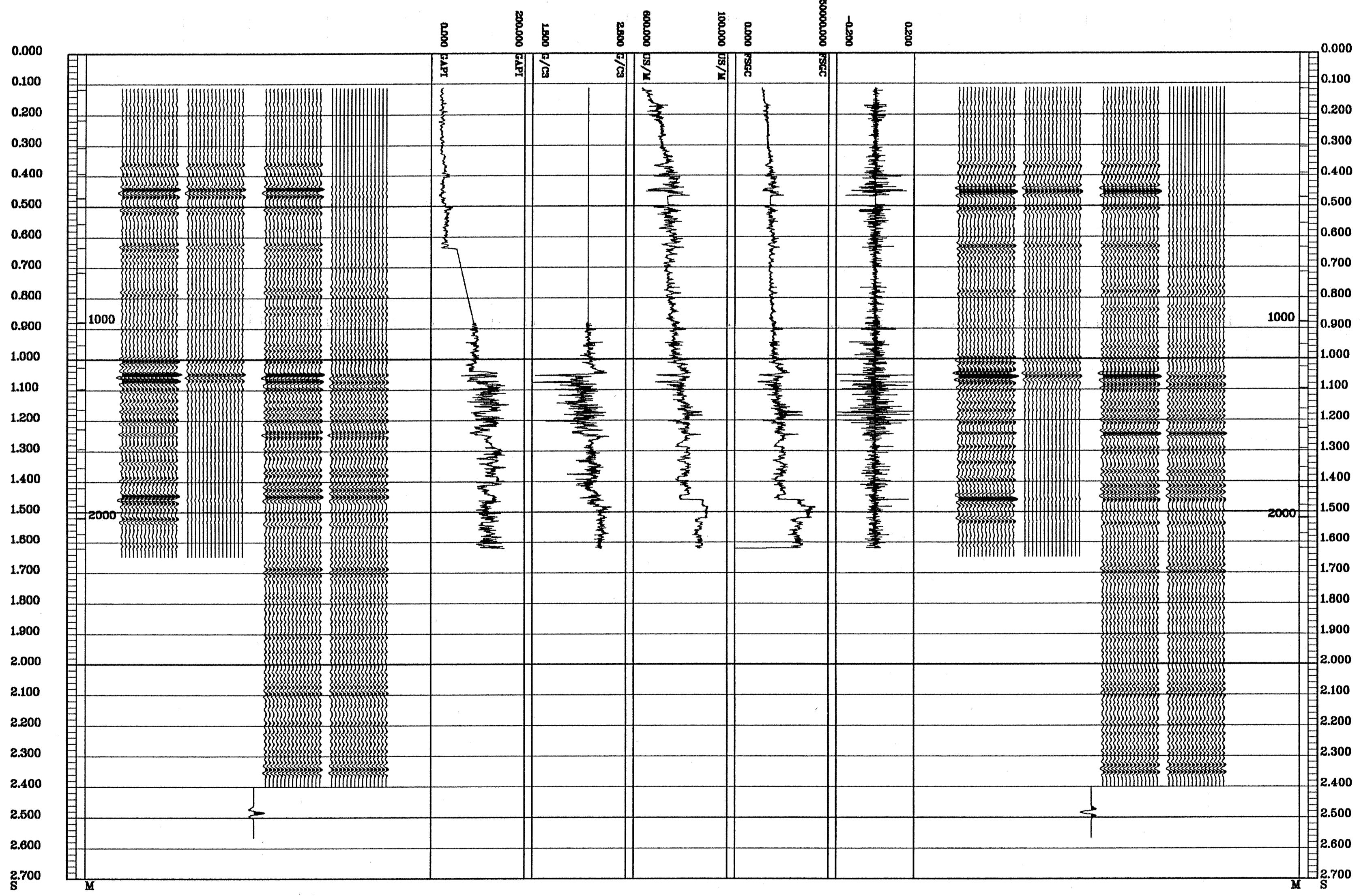
REMARKS

The well name, location and borehole reference data were furnished by the customer.

All interpretations are optional based on inferences from electrical or other measurements and we cannot, and do not guarantee the accuracy or correctness of any interpretations, and we shall not be held responsible for any loss, costs, damages or expenses incurred or sustained by anyone resulting from any interpretations made by any of our officers, agents or employees. These interpretations are also subject to Clause 4 of our General Terms and Conditions as set out in our current Price Schedule.

** GEOGRAM **
**35 HERTZ ZERO PHASE
RICKER WAVELET**
VERTICAL SCALE = 10 CM/SEC

MULTIPLES ONLY REVERSE POLARITY
PRIMARIES AND MULTIPLES REVERSE POLARITY
PRIMARIES WITH TRANSMISSION LOSS REVERSE POLARITY
PRIMARIES REVERSE POLARITY
REFLECTION
ACOUSTIC IMPEDANCE
SONIC
DENSITY
GAMMA RAY
MULTIPLES ONLY NORMAL POLARITY
PRIMARIES AND MULTIPLES NORMAL POLARITY
PRIMARIES WITH TRANSMISSION LOSS NORMAL POLARITY
PRIMARIES NORMAL POLARITY



COMPANY B H P PETROLEUM
FIELD WILDCAT
WELL LONGTOM-1
COUNTRY AUSTRALIA