

# GEOGRAM\*

(Synthetic Seismogram)

Company: B H P PETROLEUM  
Well: LONGTOM-1  
Field: WILDCAT  
Country: AUSTRALIA

25 Hz Zero Phase  
Ricker wavelet

Reference No: SYL59117/591118 Interval: 2225.00 to 100.00  
Date Logged: 26-MAY-1995 Date Processed: 23 JUN 1995  
Location: 038 06' 00.03" S 148 18' 54.32" E  
Elevations: KB: 25.30 DF: 25.00 GL: -56.25  
Permanent Datum: MSL Depth Units: METRES

LOG INFORMATION  
FIELD RECORDING: Engineer: R. JOHNSON Location: VEA Program Version: 703-427  
COMPUTATION: Analyst: A. WILSONO Curve: STJ Baseline: 20.5  
ELEVATION ABOVE MEAN SEA LEVEL  
Logging Datum: 25.00  
Seismic Reference Datum: 0.00  
Sonic Calibration by Check Shot: YES Sonic Edited by Analyst: YES  
Two-Way Time Sample Interval: 1 ms Environment: YES

True Vertical Depth Corrections Applied: YES  
Source of True Vertical Depth Data: Maximum Hole Deviation: 0

Run	Date	Tool Type	BRISOL Depth	casing Elev	Top Depth	Bottom Depth
ONE	18-06-1986	DL-SLS	17.5 M		80 M	703 M
TWO	25-06-1986	DL-LDL	12.25 M		700 M	2207 M
VSP Run	Date	Case	Hypocentre	Case	Hypocentre	Case
ONE	28-06-1986	80 M	50 M	5 M BELOW MSL	10 M BELOW MSL	67.0 DEG

Equal time slice model of horizontal plane layers.  
Plane acoustic waves at normal incidence.  
No intrinsic attenuation.

POLARITY  
An upgoing wave, reflected by an increase in acoustic impedance with depth, is displayed as a white trough under normal polarity.

SIGNALURES  
All signatures displayed in the Geogram results correspond to a wavelet convolved with a reflection coefficient of -0.5 (A decrease in acoustic impedance with depth).

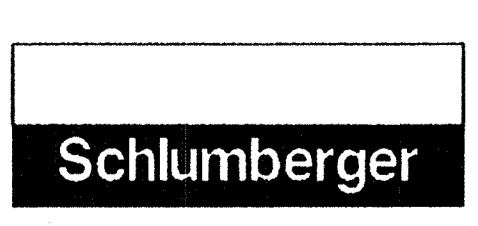
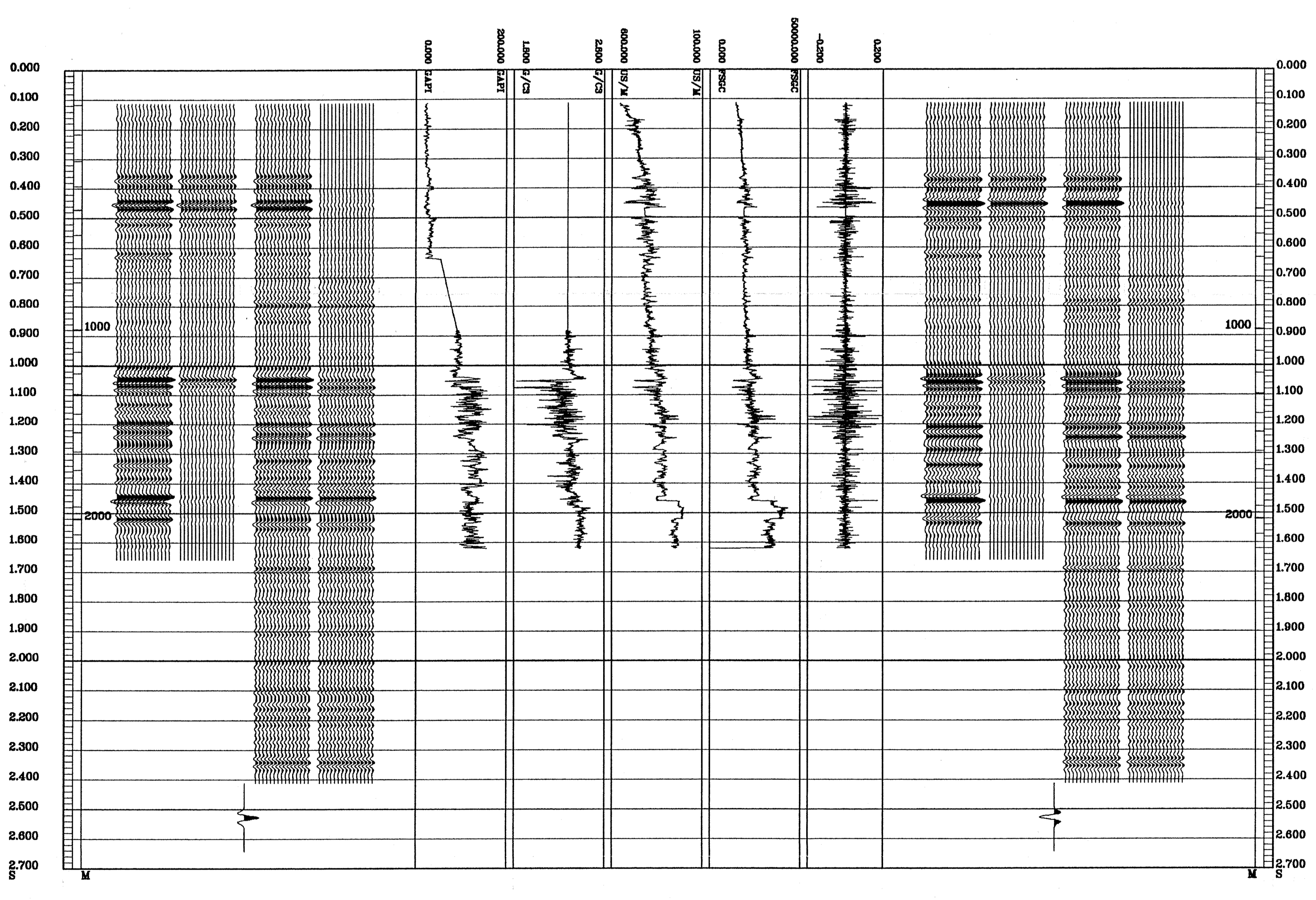
REMARKS

The well name, location and borehole reference data were furnished by the customer.

All interpretations are opinions based on inferences from electrical or other measurements and we cannot, and do not guarantee the accuracy or correctness of any interpretations, and we shall not, except in the case of gross or willful negligence on our part, be liable or responsible for any loss, costs, damages or expenses incurred or sustained by anyone resulting from any interpretations made by any of our officers, agents or employees. These interpretations are also subject to Clause 4 of our General Terms and Conditions as set out in our current Price Schedule.

\*\* GEOGRAM \*\*  
25 HERTZ ZERO PHASE  
RICKER WAVELET  
VERTICAL SCALE = 10 CM/SEC

MULTIPLES ONLY REVERSE POLARITY
PRIMARIES AND MULTIPLES REVERSE POLARITY
PRIMARIES WITH TRANSMISSION LOSS REVERSE POLARITY
PRIMARIES REVERSE POLARITY
REFLECTION
ACOUSTIC IMPEDANCE
SONIC
DENSITY
GAMMA RAY
MULTIPLES ONLY NORMAL POLARITY
PRIMARIES AND MULTIPLES NORMAL POLARITY
PRIMARIES WITH TRANSMISSION LOSS NORMAL POLARITY
PRIMARIES NORMAL POLARITY



COMPANY B H P PETROLEUM  
FIELD WILDCAT  
WELL LONGTOM-1  
COUNTRY AUSTRALIA