

SEISMIC CALIBRATION LOG

(Adjusted Continuous Velocity Log)



Company: ESSO AUSTRALIA LTD.

Well: KIPPER - 2

Field: KIPPER *Schumann 8205022 Site Ch. 1/10/87*

Country: AUSTRALIA

Reference No: 570504 Interval: 0.00 to 2800.00

Date Logged: 17/04/87 Date Processed: 14/05/87

Location: 038 11 31.59' S 148 36' 45.20' E

Elevations: KB: 22.3 M DE: 22.0 M GL: -107.3 M

Permanent Datum: MSL Depth Units: METRES

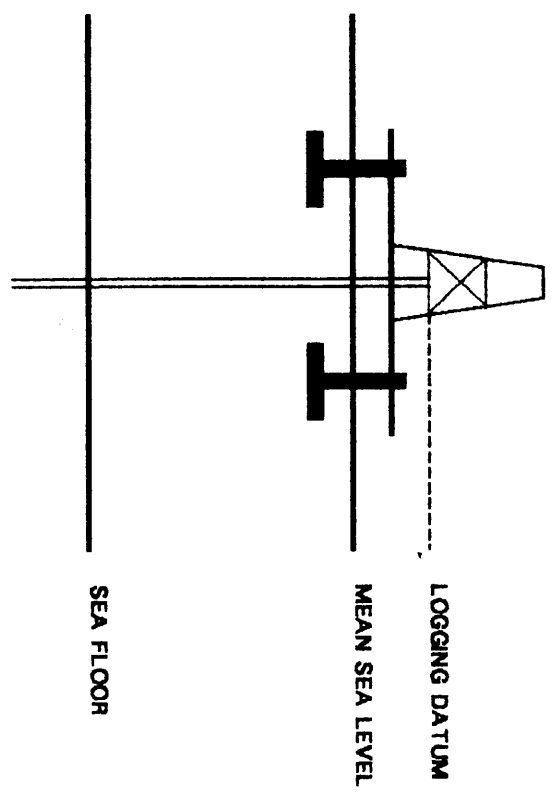
FIELD RECORDING: Engineer: PALAABSTER Location: VEA Program Version: 28.466

COMPUTATION: Analyst: A.G.H. Centre: SVJ Baseline: 14.814

Logging Datum: 22.3 M

Seismic Reference Datum: MSL

Sea Floor: -107.3 M



Total Number of VSP Levels: 23 (from 266 to 2800 M below KB)

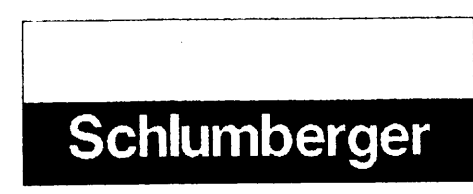
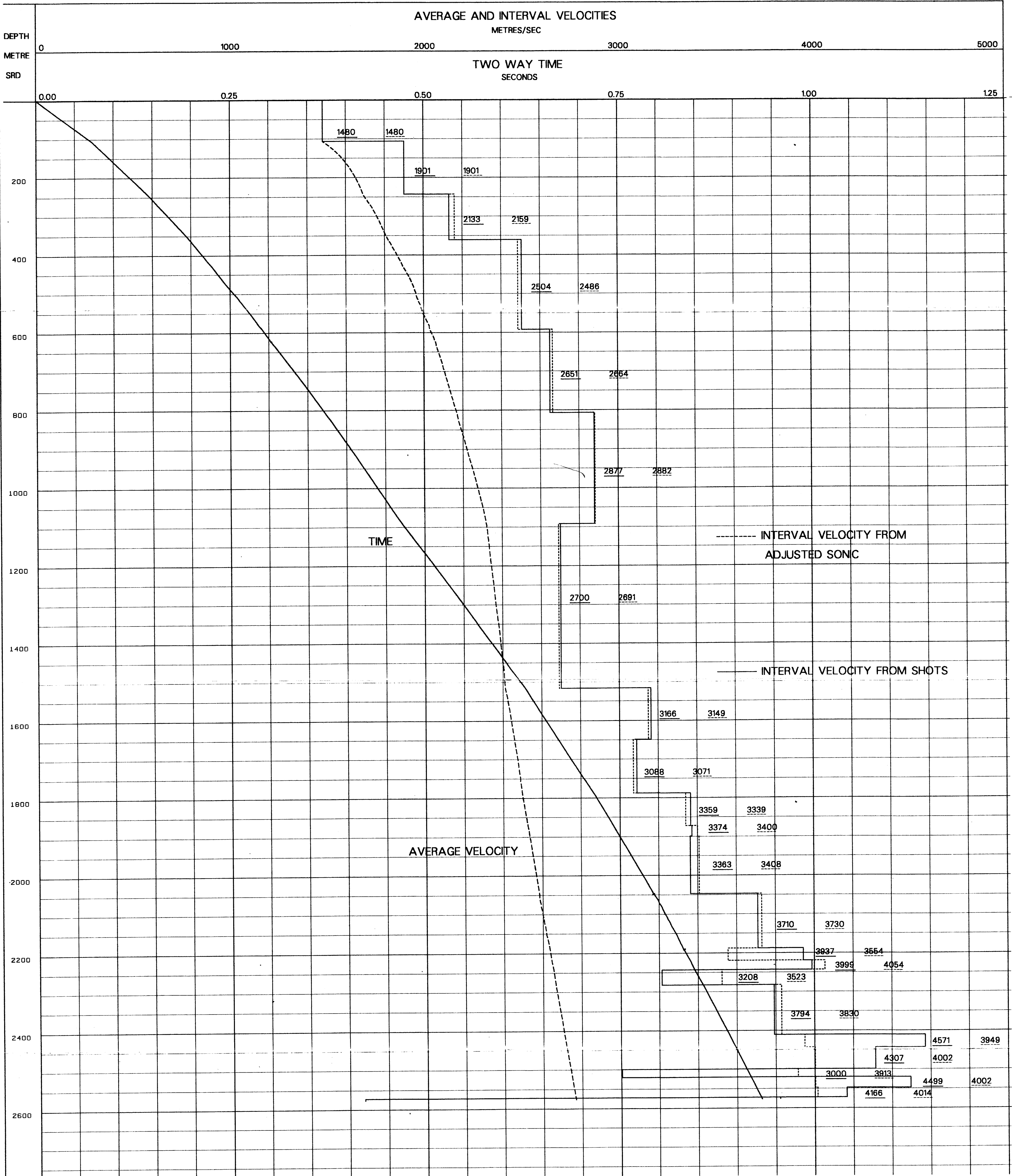
VSP Depth Reference: SRD

Run	Date	Tool Type	Bit Size/Depth	Casing Size/Depth	Top Depth	Bottom Depth
1	16-03-87	SLS	17 1/2" @ 820.5 M	20" @ 289.0 M	288 M	827 M
2	16-04-87	SLS	12 1/4" @ 2800.0 M	19 3/8" @ 820.0 M	820.0 M	2800.0 M

Remarks:
 Sonic log interval 266 - 2800 metres below KB
 Density log interval 830 - 2800 metres below KB
 Time Scale = 3.75 n/sec
 Source offset of 28.64m derived from Moon-pool Shot

The well name, location and borehole reference data were furnished by the customer.

All interpretations are opinions based on inferences from electrical or other measurements and we cannot, and do not guarantee the accuracy or correctness of any interpretations, and we shall not, except in the case of gross or willful negligence on our part, be liable or responsible for any loss, costs, damages or expenses incurred or sustained by anyone resulting from any interpretations made by any of our officers, agents or employees. These interpretations are also subject to Clause 4 of our General Terms and Conditions as set out in our current Price Schedule.



COMPANY ESSO AUSTRALIA LTD.
 FIELD KIPPER
 WELL KIPPER - 2
 COUNTRY AUSTRALIA