



# GEOGRAM\*

(Synthetic Seismogram)

\* Mark of Schlumberger

Company: ESSO AUSTRALIA LTD

Well: KINGFISH 8

Field: KINGFISH

Country: AUSTRALIA

Reference No: 560775

Date Logged: 24-03-92

Location: 38 55' 36" S 148 03' 27" E

Extensions: KS: 23.00 DF: 22.70 QL: 78.00

Permanent Datum: MSI

Depth Units: METRES

LOG INFORMATION

FIELD RECORDING: Engineer: M. HILLMAN Location: Program Version: 30.4

COMPUTATION: Analyst: T. BOWMAN Operator: S.V. BARNER File No: 813

Logging Datum: 23.00

Seismic Reference Datum: 0.00

Sonic Calibration By Check Shots: YES Sonic Edited By Analyst: YES

Two-Way Time Sample Interval: 2 ms Environment: offshore

True Vertical Depth Corrections Applied:

Source of True Vertical Depth Data:

Maximum Hole Deviation:

Run	Date	Tool Type	Bottom Depth (m)	Group Size (m)	Top Depth (m)	Bottom Depth (m)
1	15-03-92	AS	821 M	20 M	841 M	821 M
2	24-03-92	SPT	2413 M		2413 M	815 M
3	24-03-92	10M	10 M	10 M BELOW HOLE	15 M BELOW HOLE	190
4	24-03-92	10M	10 M	10 M BELOW HOLE	15 M BELOW HOLE	190

GEOGRAM MODEL ASSUMPTIONS

Equal area sea model of horizontal plane layers.

Plane acoustic waves at normal incidence.

No intrinsic attenuation.

POLARITY

An upgoing wave, reflected by an increase in acoustic impedance with depth, is displayed as a white trough under normal polarity.

SIGNATURES

All signatures displayed in the Geogram results correspond to a wavelet convolved with a reflection coefficient of 0.5 (A decrease in acoustic impedance with depth).

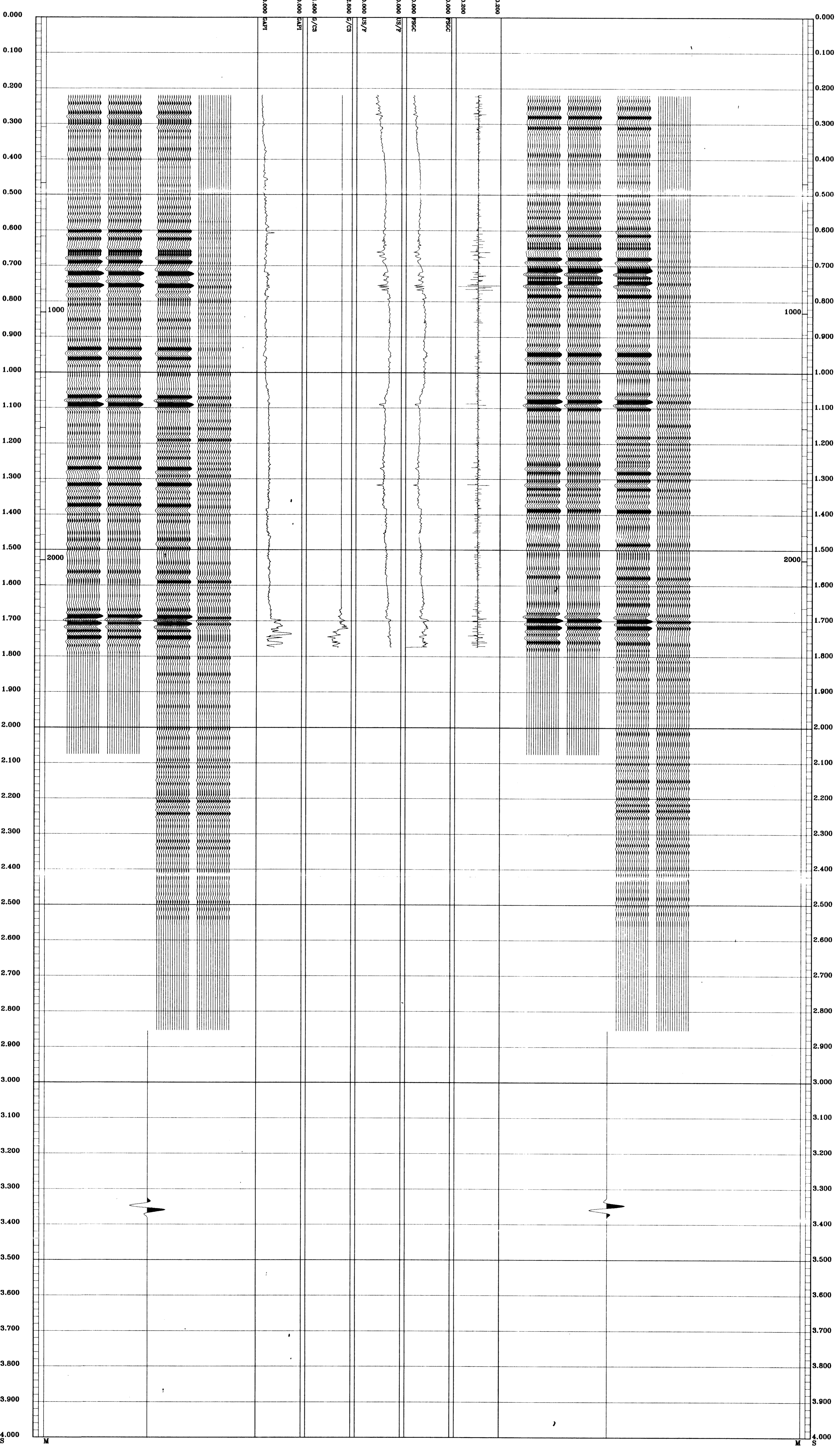
UNIT VALUES

The well name, location and borehole reference data were furnished by the customer.

All interpretations are opinions based on inferences from electrical or other measurements and we warrant, and do not guarantee the accuracy or correctness of any interpretations, and we shall not, except in the case of gross or willful negligence on our part, be liable or responsible for any loss, costs, damages or expenses incurred or sustained by anyone in reliance on or made by any of our officers, agents or employees. These interpretations are also subject to Clause 4 of our General Terms and Conditions as set out in our current Price Schedule.

**\*\* GEOGRAM \*\***  
**35 HERTZ ZERO PHASE**  
**RICKER WAVELET WITH -90 DEG. PHASE SHIFT**  
**KINGFISH-8**

- MULTIPLES ONLY  
REVERSE POLARITY
- PRIMARIES AND MULTIPLES  
REVERSE POLARITY
- PRIMARIES WITH TRANSMISSION LOSS  
REVERSE POLARITY
- PRIMARIES  
REVERSE POLARITY
- REFLECTION
- ACOUSTIC  
IMPEDANCE
- SONIC
- DENSITY
- GAMMA RAY
- MULTIPLES ONLY  
NORMAL POLARITY
- PRIMARIES AND MULTIPLES  
NORMAL POLARITY
- PRIMARIES WITH TRANSMISSION LOSS  
NORMAL POLARITY
- PRIMARIES  
NORMAL POLARITY



COMPANY ESSO AUSTRALIA LTD  
 FIELD KINGFISH  
 WELL KINGFISH #8  
 COUNTRY AUSTRALIA