



GEOGRAM*

(Synthetic Seismogram)

Company: ESSO AUSTRALIA LTD
 Well: KINGFISH #8
 Field: KINGFISH
 Country: AUSTRALIA
 Reference No: 560775 Interval: 2405.00 to 2255.00
 Data Logged: 24-03-92 Date Processed: 2-4-92
 Location: 38 59 59' S 148 03 27' E
 Elevations: KB: 23.00 DF: 22.70 QL: 76.00
 Permanent Datum: MSL Depth Units: METRES

LOG INFORMATION
 FIELD RECORDING: Engineer: M. HELWIG Location: Program Version: 32.4
 Geophysicist: T. ROMANUK Cards: 571 Barcodes: 203
 Logging Datum: 23.00
 Seismic Reference Datum: 0.00
 Sonic Calibration by Check Shots: YES Sonic Edited by Analyst: YES
 Two-Way Time Sample Interval: 2 ms Environment: offshore

True Vertical Depth Corrections Applied:
 Source of True Vertical Depth Data:
 Maximum Tide Deviation:

Run	Case	Type	Bit Size	Charge Size	Top Depth	Bottom Depth
1	134-02	AS			623 M	225 M
2	24-02	SBT			2413 M	615 M

EQUAL TIME SLOPE MODEL OF HORIZONTAL PLANE LAYERS.
 Pure acoustic waves at normal incidence.
 No intrinsic attenuation.

POLARITY
 An upgoing wave, reflected by an increase in acoustic impedance with depth, is displayed as a white trough under normal polarity.
 SINGULARITIES

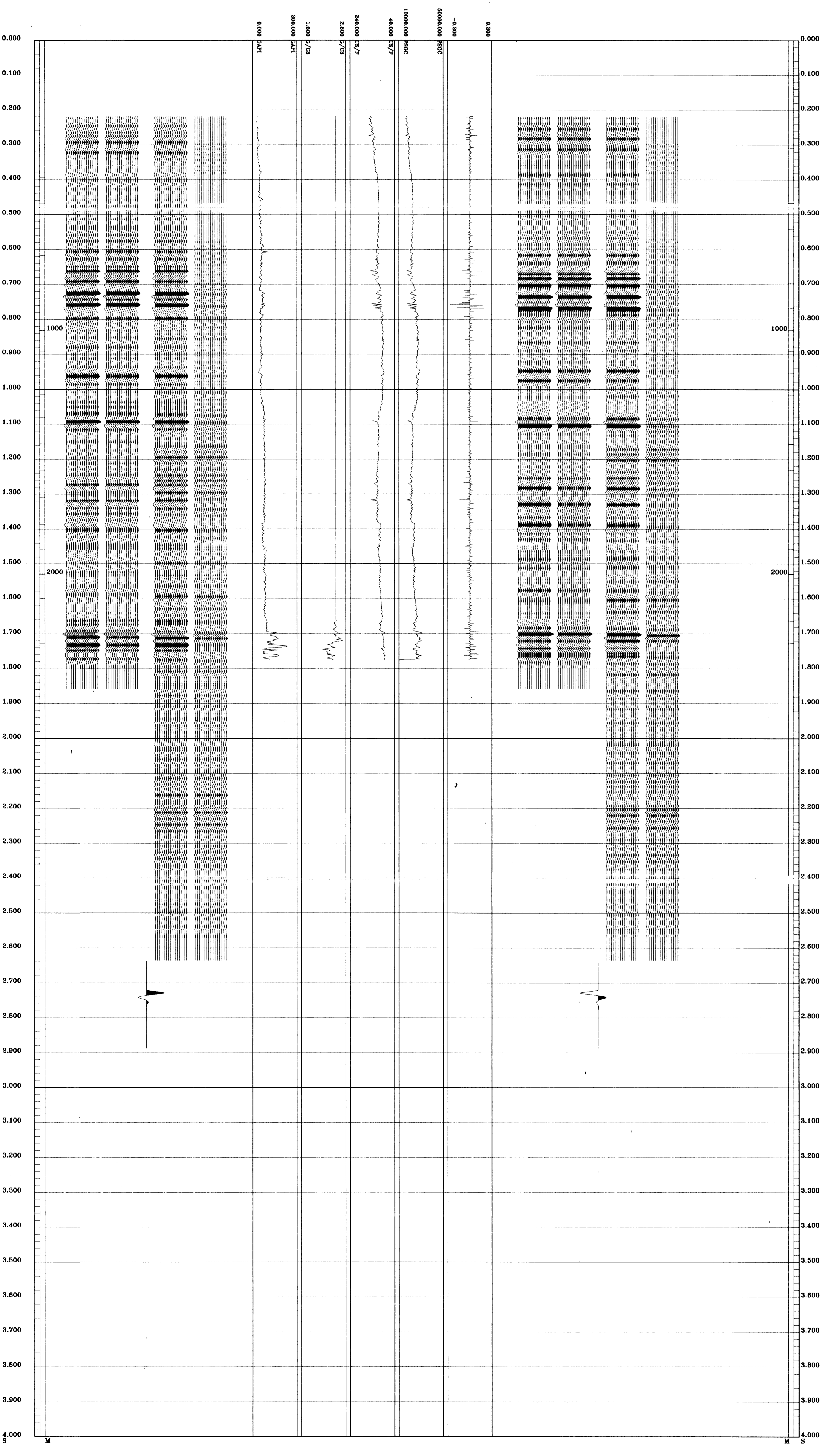
All signatures displayed in the Geogram results correspond to a wavelet convolved with a reflection coefficient of 0.5 (A decrease in acoustic impedance with depth).

The well name, location and borehole reference data were furnished by the customer.

All interpretations are opinions based on inferences from electrical or other measurements and we cannot, and do not guarantee the accuracy or correctness of any interpretations, and we shall not, except in the case of gross or willful negligence on our part, be liable or responsible for any loss, costs, damages or expenses incurred or sustained by anyone because of interpretations made by us or any of our officers, agents or employees. These interpretations are also subject to Clause 4 of our General Terms and Conditions as set out in our current Price Schedule.

*** GEOGRAM ***
**35 HERTZ MINIMUM PHASE
 RICKER WAVELET**
KINGFISH-8

- MULTIPLIES ONLY
REVERSE POLARITY
- PRIMARYS AND MULTIPLES
REVERSE POLARITY
- PRIMARYS WITH TRANSMISSION LOSS
REVERSE POLARITY
- PRIMARYS
REVERSE POLARITY
- REFLECTION
- ACOUSTIC
IMPEDANCE
- SONIC
- DENSITY
- GAMMA RAY
- MULTIPLIES ONLY
NORMAL POLARITY
- PRIMARYS AND MULTIPLES
NORMAL POLARITY
- PRIMARYS WITH TRANSMISSION LOSS
NORMAL POLARITY
- PRIMARYS
NORMAL POLARITY



COMPANY ESSO AUSTRALIA LTD
 FIELD KINGFISH
 WELL KINGFISH #8
 COUNTRY AUSTRALIA

