



GEOGRAM*

(Synthetic Seismogram)

* MARKED SCHLUMBERGER

Company: ESSO AUSTRALIA LTD
 Well: KINGFISH 8
 Field: KINGFISH
 Country: AUSTRALIA
 Reference No: 960775 Interval: 2405.00 to 225.00
 Date Logged: 24.03.92 Date Processed: 24.02
 Location: 38 35 39.5 S 148 03 27.0 E
 Elevations: KB: 22.00 DF: 22.70 GL: -76.00
 Permanent Datum: MSL Depth Units: METRES

LOG INFORMATION

FIELD RECORDING Engineer: M. HILLMAN Location: Program Version: 32.4
 Acquisition: 1. ROMMAN Operator: D.V. Barman 20.0
 ELEVATION ABOVE MEAN SEA LEVEL

Logging Datum: 22.00
 Seismic Reference Datum: 0.00
 Sonic Calibration By Check Shots: YES Sonic Edited By Analyst: YES

Two-Way Time Sample Interval: 2 ms Environment: offshore

True Vertical Depth Corrections Applied:
 Source of True Vertical Depth Data:
 Maximum Hole Deviation:

Run	Date	Type	BSZ	Depth	Depth	Depth	Top	Bottom
1	13-08-92	AS	BSZ	Depth	Depth	Depth	Top	Bottom
2	24-03-92	807					2613 M	618 M
1	24-03-92	101 M	101 M	101 M	101 M	101 M	199	199
2	24-03-92	101 M	101 M	101 M	101 M	101 M	199	199

GEOGRAM MODEL ASSUMPTIONS

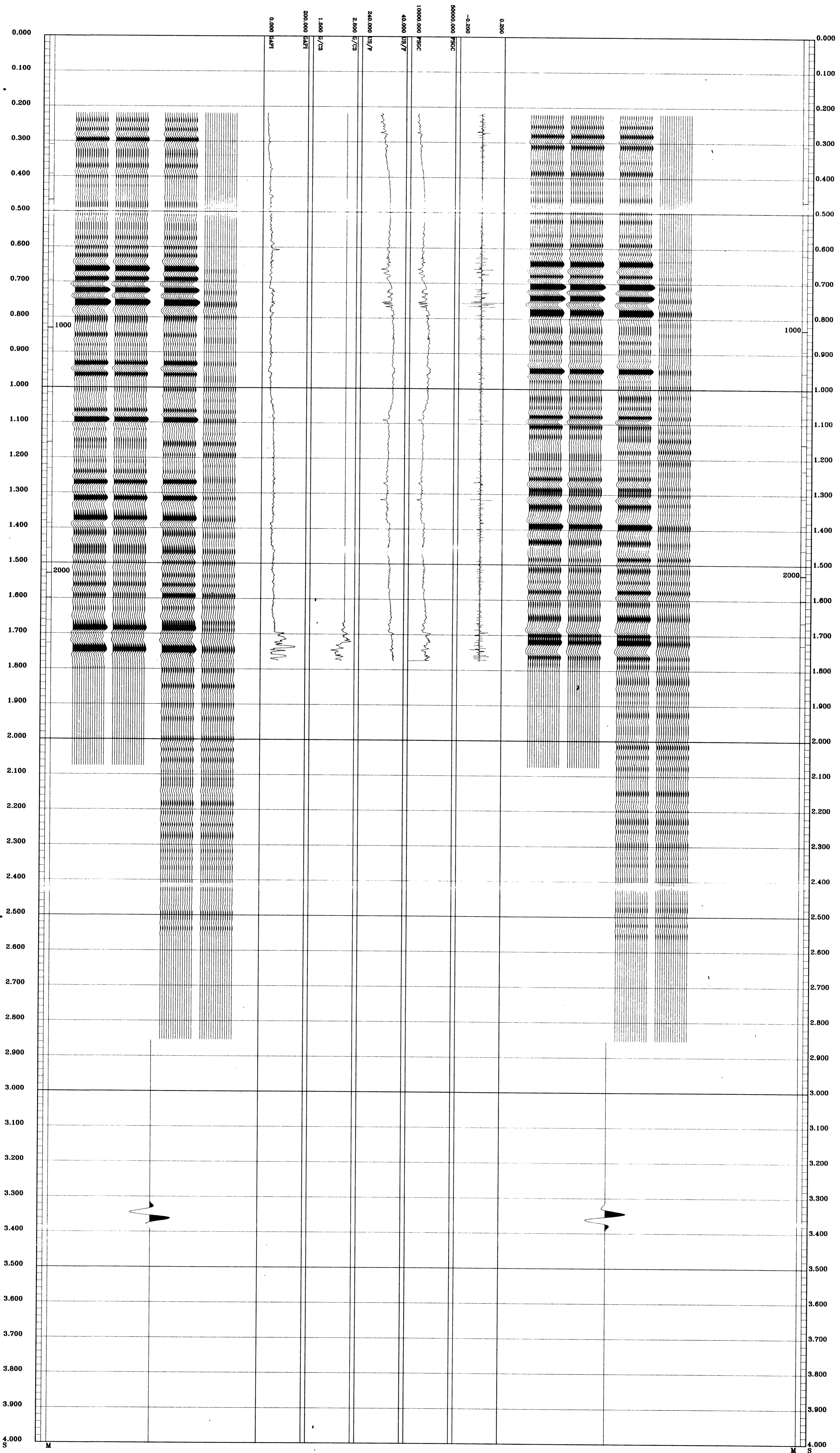
Equal time slice model of horizontal plane layers.
 Pure acoustic waves at normal incidence.
 No intrinsic attenuation.
POLARITY
 An upgoing wave, reflected by an increase in acoustic impedance with depth, is displayed as a white trough under normal polarity.
SEISMOLOGICAL SIGNATURES
 All signatures displayed in the Geogram results correspond to a wavelet convolved with a reflection coefficient of -0.5 (A decrease in acoustic impedance with depth).
IR TRACKS

The well name, location and borehole reference data were furnished by the customer.

All interpretations are opinions based on inferences from electrical or other measurements and we cannot, and do not guarantee the accuracy or correctness of any interpretations, and we shall not, except in the case of gross or willful negligence on our part, be liable or responsible for any loss, costs, damages or expenses incurred or sustained by anyone in reliance on the interpretations made by us or any of our officers, agents or employees. These interpretations are also subject to Clause 4 of our General Terms and Conditions as set out in our current Price Schedule.

**** GEOGRAM ****
25 HERTZ ZERO PHASE
RICKER WAVELET WITH -90 DEG. PHASE SHIFT
KINGFISH-8

MULTIPLES ONLY REVERSE POLARITY
PRIMARIES AND MULTIPLES REVERSE POLARITY
PRIMARIES WITH TRANSMISSION LOSS REVERSE POLARITY
PRIMARIES REVERSE POLARITY
REFLECTION
ACOUSTIC IMPEDANCE
SONIC
DENSITY
GAMMA RAY
MULTIPLES ONLY NORMAL POLARITY
PRIMARIES AND MULTIPLES NORMAL POLARITY
PRIMARIES WITH TRANSMISSION LOSS NORMAL POLARITY
PRIMARIES NORMAL POLARITY



COMPANY ESSO AUSTRALIA LTD
 FIELD KINGFISH
 WELL KINGFISH #8
 COUNTRY AUSTRALIA

