



WELL KINGFISH NO.6
 COMPANY ESSO
 COUNTY GIPPSLAND BASIN
 STATE VICTORIA

LEGEND
 DEPTH CORRESPONDS TO DRILL
 PIPE MEASUREMENTS.
 NB NEW BIT
 NCB NEW CORE BIT
 DST DRILL STEM TEST
 NR NO RETURNS
 TG TRIP GAS
 CO CIRCULATE OUT RETURNS

LITHOLOGY

SAND	GRANITE WASH	LIME STONE	CHERT
SHALE	GYP ANHYDRITE	DOLOMITE	LIGNITE

CUTTINGS ANALYSIS

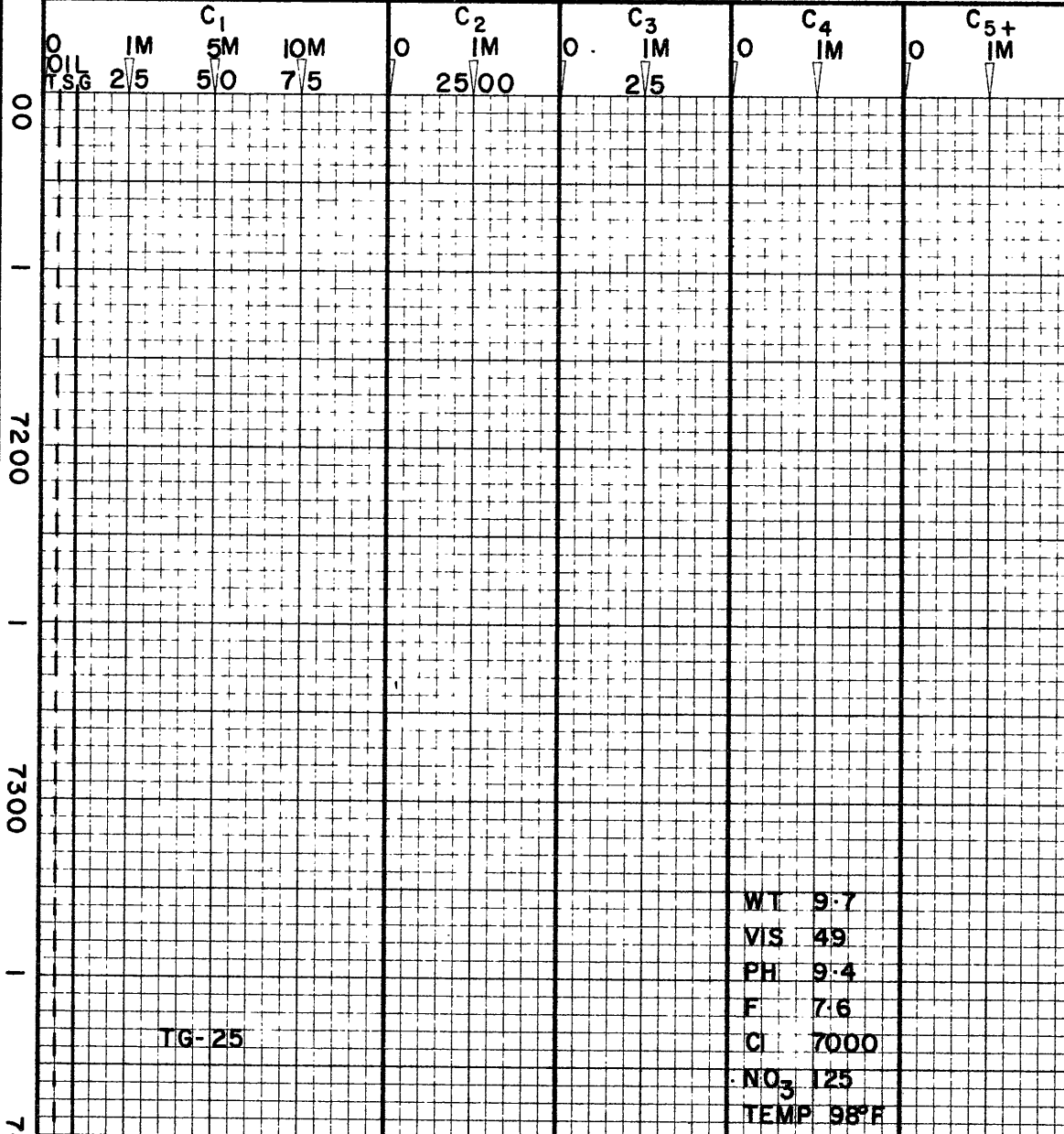
TOTAL GAS _____
 METHANE - - - - -
 LIQUID HYDROCARBONS
 (C₆₊) - - - - - 6+

DRILLING RATE

FT. PER HR. MIN. PER FT.
 150 100 50
 'd' - 1.5 2.0 2.5
 VISUAL POROSITY
 GST

LITHOLOGY

ppm HYDROCARBONS IN MUD M=1000



OIL TSG

SHALE LT-MED GRY,
 SILTY, PYR, CARB

ABNT FORAMS

SHALE LT-MED GRY,
 SILTY, PYR, CARB

CO. NB. 11 X 3A
 7.0 HRS

TG-25

WT 9.7
 VIS 49
 PH 9.4
 F 7.6
 CI 7000
 NO₃ 125
 TEMP 98°F

DEPT. NAT. RES & ENV



PE603526