

19 of 25



WELL KINGFISH NO.6  
 COMPANY ESSO  
 COUNTY GIPPSLAND BASIN  
 STATE VICTORIA

**LEGEND**  
 DEPTH CORRESPONDS TO DRILL  
 PIPE MEASUREMENTS.  
 NB NEW BIT  
 NCB NEW CORE BIT  
 DST DRILL STEM TEST  
 NR NO RETURNS  
 TG TRIP GAS  
 CO CIRCULATE OUT RETURNS

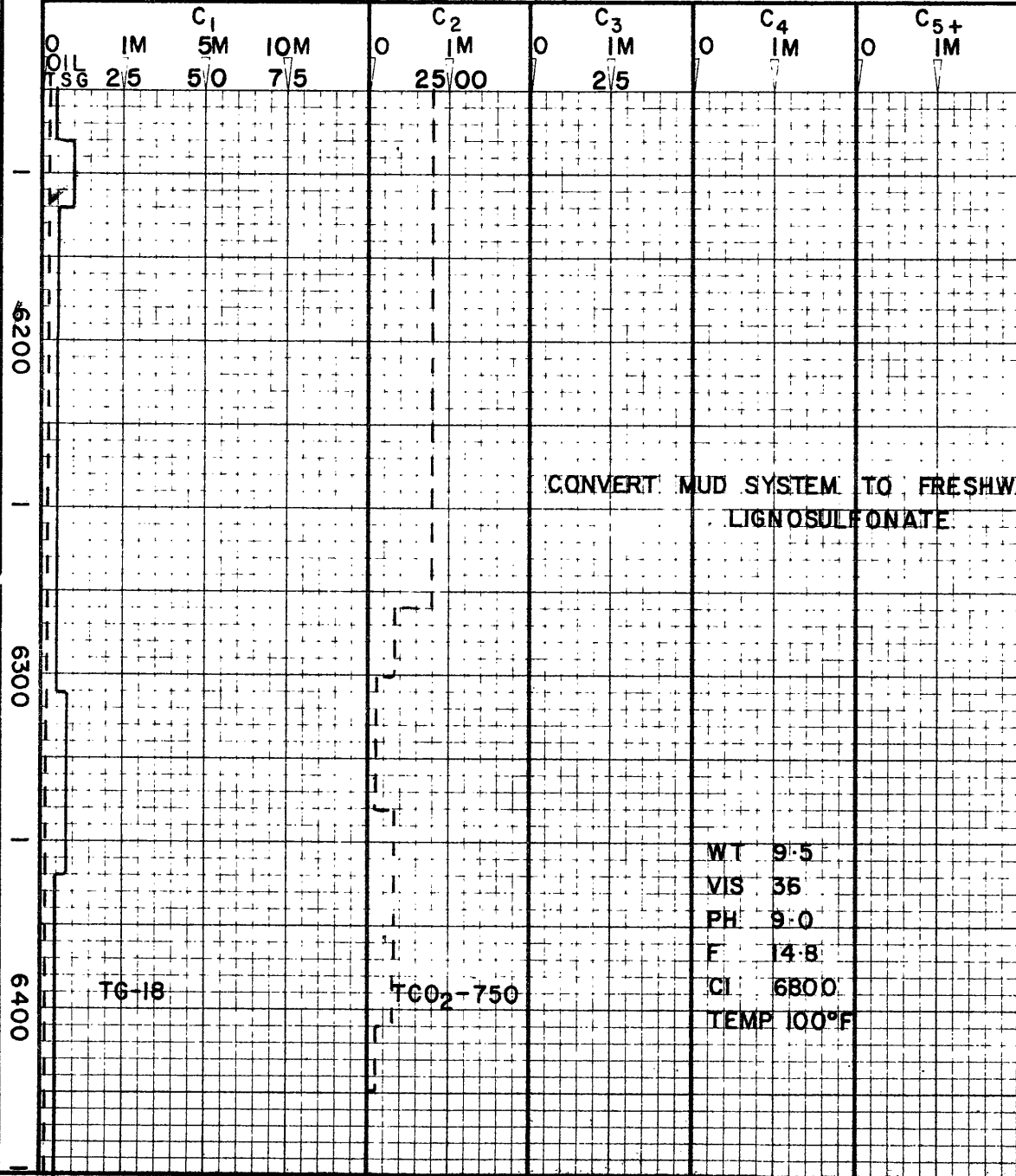
**LITHOLOGY**  
 SAND [Pattern] GRANITE WASH [Pattern] LIME STONE [Pattern]  
 SHALE [Pattern] GYP ANHYDRITE [Pattern] DOLOMITE [Pattern]  
 CHERT [Pattern] LIGNITE [Pattern]

**CUTTINGS ANALYSIS**  
 TOTAL GAS \_\_\_\_\_  
 METHANE \_\_\_\_\_  
 LIQUID HYDROCARBONS (C<sub>6+</sub>) \_\_\_\_\_

**DRILLING RATE**  
 [X] FT PER HR [ ] MIN. PER FT.  
 150 100 50  
 'd'- 1.5 2.0 2.5  
 VISUAL POROSITY  
 GST

**LITHOLOGY**

**ppm HYDROCARBONS IN MUD M=1000**



OIL TSG

MARL. SOFT, LT GRY, GLAUC

CONVERT MUD SYSTEM TO FRESHWATER LIGNOSULFONATE

SILTSTONE: FM-SFT, CALC, GLAUC

WT 9.5  
 VIS 36  
 PH 9.0  
 F 14.8  
 CI 6800  
 TEMP 100°F

SHALE MED GRY, FM, V. CALC, SL. PYR

NB40, X3A, 9.2 HRS  
 X10

DEPT. NAT. RES & ENV  
  
 PE603523