



DEPT. INT. RES & ENV  
PE504688

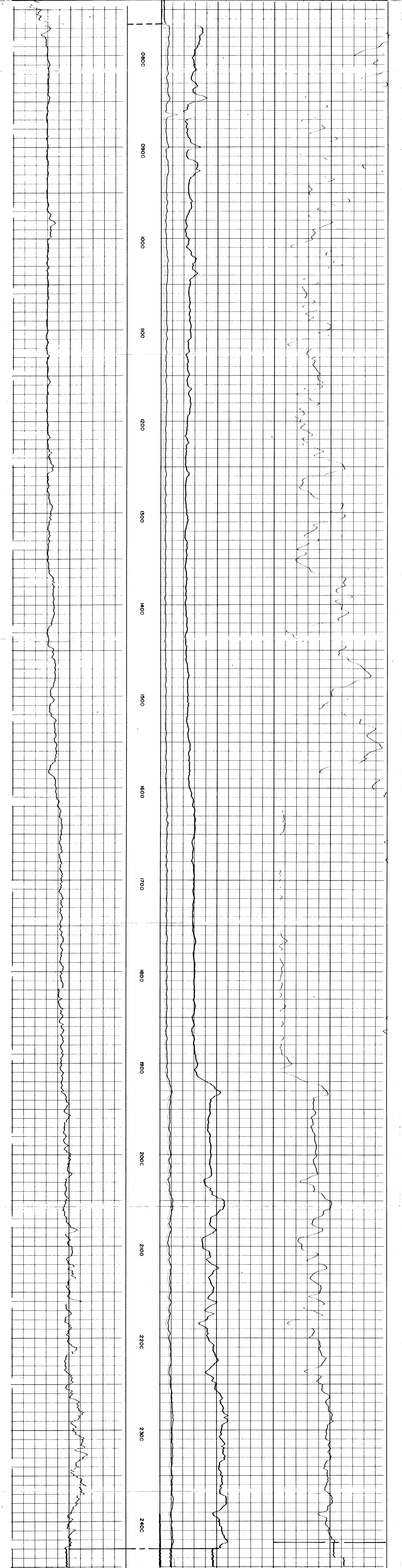
COUNTRY	AUSTRALIA	COMPANY	ESSO STANDARD OIL (AUST)
FIELD	WILDCAT	WELL	KINGFISH B-1
COMPANY	ESSO	FIELD	WILDCAT
		COUNTRY	AUSTRALIA
		STATE	VICTORIA
Location:		LAT. 38° 35' 51"	
		LONG. 148° 10' 13"	
Permanent datum		Elev. 0	
Log Measured From		RT 31 Ft. Above Perm. Datum	
Drilling Measured From		RT 31 Ft. Above Perm. Datum	
RUN No. / Bath Scale	2" / 2"	Ref. No.:	B 5684, 604, 651
Date	DEC 67	Elev. K.B.	31'
First Reading	2430	D.F.	31'
Last Reading	1666	G.L.	
Interval Measured	1666		
Casing Schlumberger	765		
Casing Driller	2431		
Bottom Driller	2431		
Mud Nature	6 ELT WATER		
Density, Viscosity	8.5 @ 60 °F		
Mud Resistivity	1.66 @ 75 °F		
Mud Resist. BHT	1.32 @ 75 °F		
pH Fluid Loss	1.3		
Origin of Sample	1.47 @ 60 °F		
Rmc	1.24 @ 2431		
Bit Size	2		
Casing Size	2 1/2"		
Op. Rig Time	3 1/2 hrs		
Tool No.	054 2035		
Recorded By	HOWLERSLATER		
Witness	BILL THRELAKE		

R-NAMED  
(AUG. 1968)  
KINGFISH 2

REMARKS: NO W.L.D. USED. DISPLACEMENT 5'-6"

LOGGING DATA		EQUIPMENT DATA	
Run No.		Run No.	1
Type of Sonde	6 EF 60	Panel	F 799
S. N. Spacing	16"	Cartridge	F 709
Stand-off	1 1/2"	Sonde	M 441
S. B. R.		Test Loop	6 132

SPONTANEOUS POTENTIAL millivolts	DEPTHS	RESISTIVITY ohms - m <sup>2</sup> /m		CONDUCTIVITY milliohms - m <sup>2</sup> /m = $\frac{1000}{\text{ohms} \cdot \text{m}^2/\text{m}}$	
		16" NORMAL	INDUCTION	INDUCTION	
-10 +	0		4	1000	0
	0		20	2000	1000
	0		200		
	0		INDUCTION		
			0	20	
			0	200	



SPONTANEOUS POTENTIAL millivolts	DEPTHS	RESISTIVITY ohms - m <sup>2</sup> /m		CONDUCTIVITY milliohms - m <sup>2</sup> /m = $\frac{1000}{\text{ohms} \cdot \text{m}^2/\text{m}}$	
		16" NORMAL	INDUCTION	INDUCTION	
-10 +	0		4	1000	0
	0		20	2000	1000
	0		200		
	0		INDUCTION		
			0	20	
			0	200	

COMPANY	ESSO STANDARD OIL (AUST)	SCHL. F.R.	2430
WELL	KING FISH B-1	SCHL. T.D.	2431
FIELD	WILDCAT	DRLR. T.D.	2467
COUNTRY	AUSTRALIA	STATE	VICTORIA

CALIBRATION FILMS