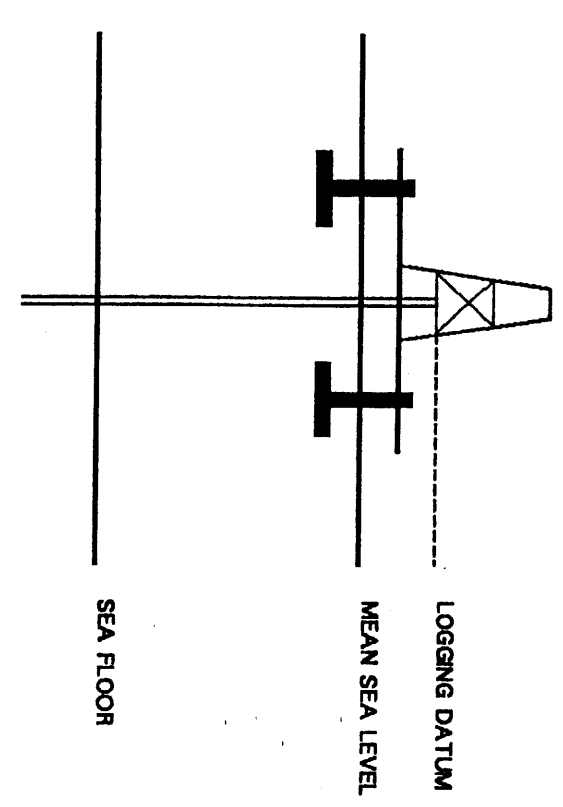


Schlumberger
 SYDNEY LOG
 INTERPRETATION
 CENTRE

SEISMIC CALIBRATION LOG

(Adjusted Continuous Velocity Log)

Company: SHELL COMPANY OF AUSTRALIA
 Well: JUDITH #1
 Field: WILDCAT
 Country: AUSTRALIA
 Reference No: 56621 Interval: 2958.00 to 800.00
 Date Logged: 16 NOV 89 Date Processed: 5/12/89
 Location: 38 09'18.5" S 148 33'20.1" E
 Elevations: KB: 2100 DF: 20.70 GL: -76.40
 Permanent Datum: MSL Depth Units: METRES
 FIELD RECORDING: Engineer: A.G.S.H. Location: Program Version: 32.2
 CONFIGURATION: Analyst: Z.KATELS Centre: SVJ Baseline: 16.11X3
 ELEVATION ABOVE MEAN SEA LEVEL
 Logging Datum: 2100
 Seismic Reference Datum: 0.00



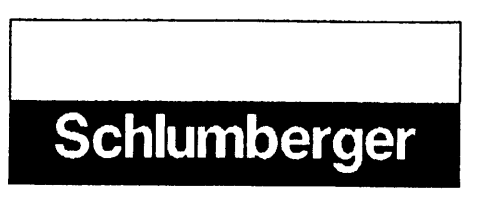
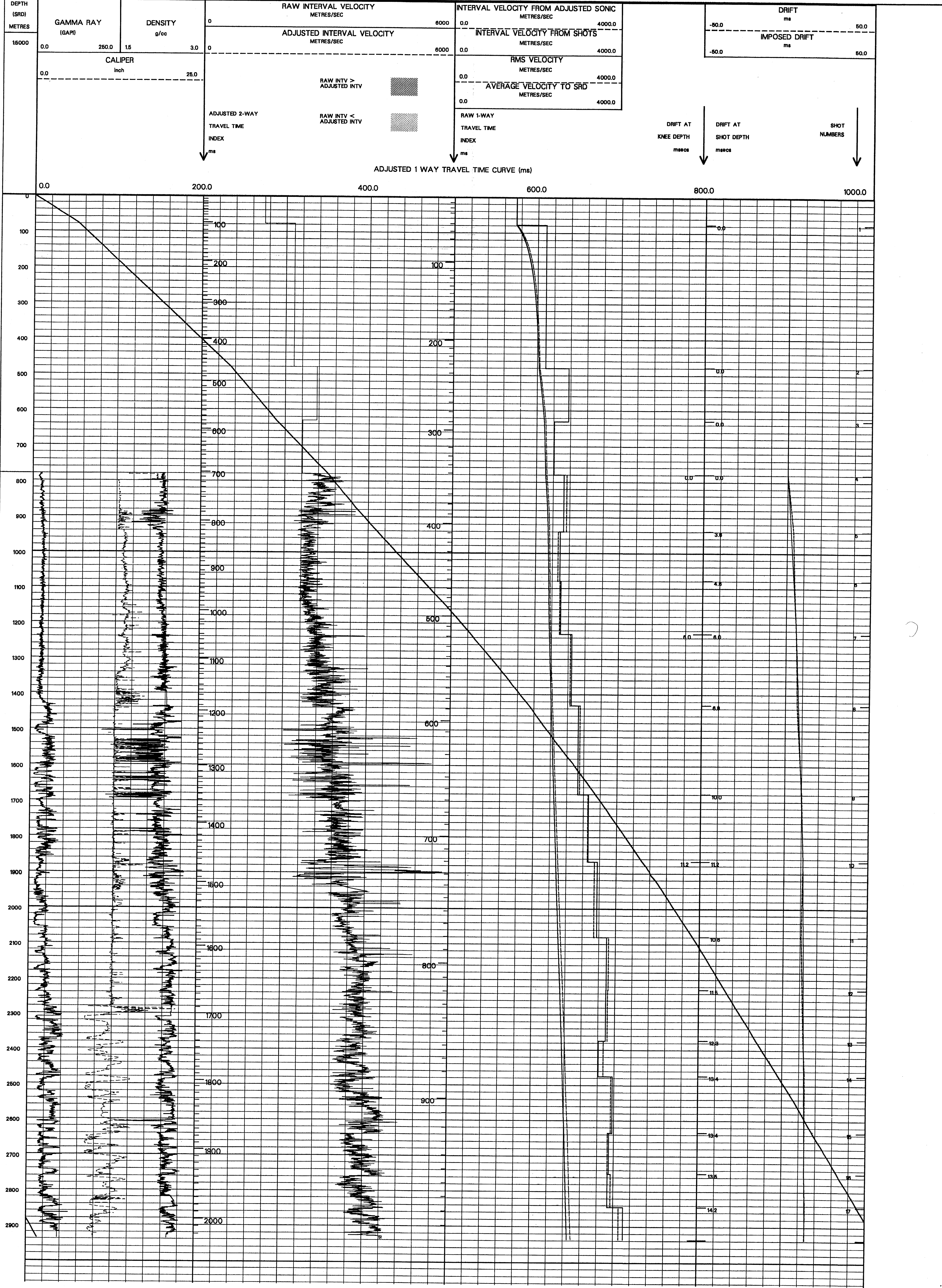
Total Number of Levels: 18
 Depth Reference: SRD

Run	Date	Tool Type	SRD	SRD	SRD	SRD	SRD
1	16-11-89	40 M	40 M	5 M BELOW MSL	10 M BELOW MSL	40.0	40.0

FOLD HERE

The well name, location and borehole reference data were furnished by the customer.

All interpretations are opinions based on inferences from electrical or other measurements and we cannot, and do not guarantee the accuracy or correctness of any interpretations, and we shall not, except in the case of gross or willful negligence on our part, be liable or responsible for any loss, costs, damages or expenses incurred or sustained by anyone resulting from any interpretations made by any of our officers, agents or employees. These interpretations are also subject to Clause 4 of our General Terms and Conditions as set out in our current Price Schedule.



COMPANY SHELL COMPANY OF AUSTRALIA
 FIELD WILDCAT
 WELL JUDITH #1
 COUNTRY AUSTRALIA