

**CORE LABORATORIES, INC.**

(Incomplete) 2<sup>nd</sup> Copy

COMPANY **ESSO STANDARD OIL (AUST.) LTD.**  
 WELL **HALIBUT A-1**  
 FIELD **WILDCAT**  
 LOCATION **VICTORIA** STATE **AUSTRALIA**  
 LAT: **38° 23' 56" S** ELEVATION **31' KB**  
 LONG: **148° 18' 59" E**

DEPTH LOGGED FROM **800** TO \_\_\_\_\_ FT.  
 DATE LOGGED **24 JUNE TO** \_\_\_\_\_  
 CREW CHIEF **STATES** FILE NO **FL-115-11L**  
 DRUG FLUID **FRESH WATER GEL** TO \_\_\_\_\_ FT.



800 - 2500

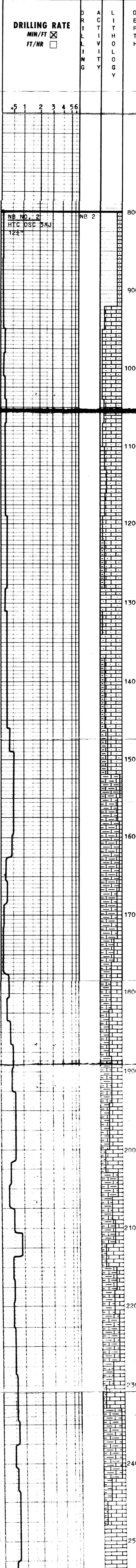
**LEGEND**

ABBREVIATIONS		RESISTIVITY, OHM-METERS		LITHOLOGY			
NB = NEW BIT		Rm = MUD		SAND	SALT	COAL	MARL
NCB = NEW CORE BIT		Rmc = MUD CAKE		CONG.	CLAY	DOLOMITE	CALC-ARENITE
CO = CIRCULATED OUT		Rmf = MUD FILTRATE		ANHYDRITE OR GYPSUM	SHALE	CHERT	
DST = DRILL STEM TEST				LIMESTONE	CHALK	SILTSTONE	
LAT = LOGGED AFTER TRIP							
TG = TRIP GAS							
NR = NO RETURNS							
DS = DIRECTIONAL SURVEY							
DC = DEPTH CORRECTION							
DEPTHS CORRESPOND TO DRILL PIPE MEASUREMENTS MEASURED FROM KB							

**HYDROCARBON ANALYSIS**

CHROMATOGRAPHIC	OIL SHOW	HOT WIRE
Drilling Mud Gas		CO <sub>2</sub> .....
Methane — Butane — 4 —		Drilling Mud Gas .....
Ethane — 2 — Pentane — 5 —		H <sub>2</sub> S .....
Propane — 3 — Hexane — 6+ —		Drill Cuttings Gas .....
Calibration:		Calibration:
1% Methane = 74 UNITS		1% Methane = 20 UNITS
1% Ethane = 92 UNITS		
1% Propane = 86 UNITS		
1% Butane = 58 UNITS		

**REMARKS**  
 FORMATION DESCRIPTION, MUD DATA, DRILL STEM TESTS, etc.  
 VERTICAL SCALE 2"=100'



NB NO. 2  
 HTC OSC 2AJ  
 122"

NOTE: BLANK PORTION OF LITHOLOGY COLUMN REPRESENTS CEMENT CONCENTRATION IN CUTTINGS.

800'-1520'  
 CALCARENITE: V LT GY TO BUFF, SOFT TO MOD HD, LOCALLY FRIABLE, WH CLAY MATRIX, FOSS, S/ DOLOMITIC, LARGE SD GRAINS AT LOCAL INTERVALS, TR GLAUC CARBONACEOUS MATTER, TR CHERT.

NOTE: SMALL AMOUNT OF GYPSUM IN FORM OF CRYSTAL AGGREGATES NOTED AT 1190'.

NOTE: FOSSIL ABUNDANCE APPEARS TO INCREASE WITH DEPTH.

1520'-2480'  
 MARL: WH TO LT GY, SOFT, CARBON. MATTER, GLAUCON, SILTY, FOSSILS (FORAM). LIMESTONE: LT TO MED GY, FIRM TO MED HD, SKELETAL TO MICRITIC, ARGILL, PYRITIC, GLAUCON, CARBON. MATTER, FOSSIL, TR CALCITE. OCC. LOOSE, V CRSE TO CRSE QUARTZ GRAINS, CLEAR TO MILKY, LOCALLY CHERTY.

MUD DATA  
 DEPTH 2550'  
 W = 10.2 APV = 15  
 V = 40 PV = 14  
 Sd = 1% VD = 2  
 CK = 2 GEL = 6/42  
 PH = 10.5 ALK = 0.25  
 CA = 40 NA CL = 3747  
 SD = 1% RMF = 1.43  
 AT = 80° F  
 SOLIDS = 13%

2480'-  
 LIMESTONE: YELLOW GY, MOD HD, F GRAN TO MICRITIC, FOSSIL TR GLAUCONITE, TR PYRITE, CARBON. MATTER, TR GYPSUM, TR CHERT.