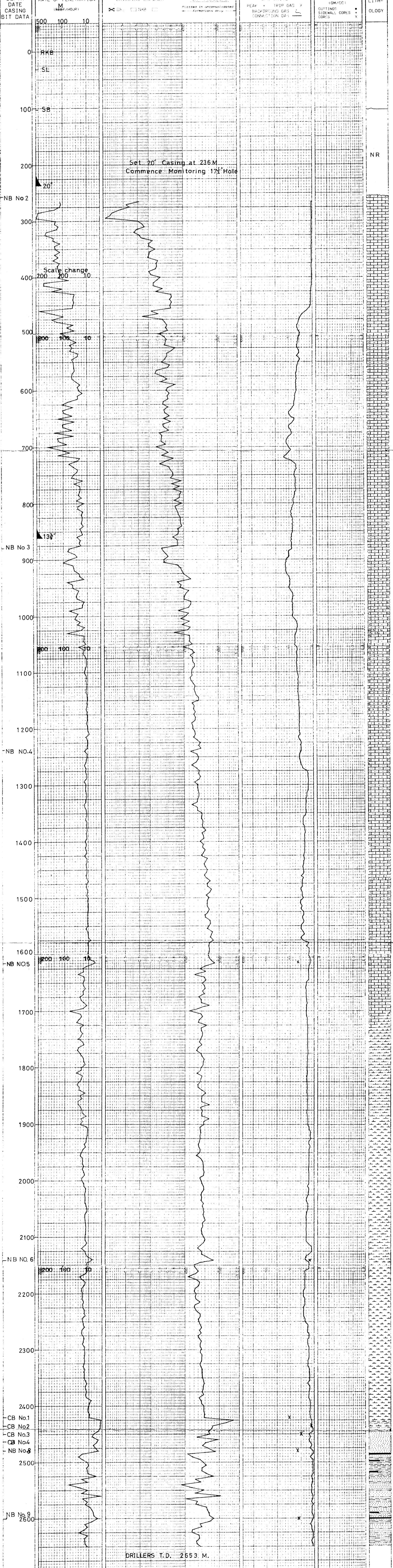


DRILLING CONTRACTOR <b>G.C.E.C.O.</b>	<b>ABBREVIATIONS</b> BG BACKGROUND GAS CC CONNECTION GAS SG SURVEY GAS STG SHORT TRIP GAS TG TRIP GAS CRG CIRCULATE RETURNS GAS NB NEW BIT RR RERUN BIT CB CORE BIT ST SHORT TRIP	<b>FC FLOW CHECK</b> CR CIRCULATE RETURNS NR NO RETURN RPM REVS PER MINUTE WOB WEIGHT ON BIT DST DRILL STEM TEST FIT FORMATION INTERVAL TEST MW MUD WEIGHT CASING SHOE	<b>COMPANY</b> <b>ESSO AUSTRALIA</b> <b>WELL</b> <b>FORTESCUE No 2</b> <b>FIELD</b> <b>FORTESCUE</b> <b>LOCATION</b> <b>38°25' 56.96"S</b> <b>148°15' 59.13"E</b> <b>COUNTY, STATE</b> <b>VICTORIA</b> <b>API WELL INDEX NO.</b> <b>ELEVATION</b> <b>RKB TO MSL 31M</b> <b>RKB TO SB 101M</b> <b>DATE</b> <b>FROM 1/11/78</b> <b>TO</b> <b>DEPTH</b> <b>FROM 256M</b> <b>TO 2653M</b> <b>UNIT NO.</b> <b>101</b> <b>LOG PREPARED BY</b> <b>S. RUSSETTI</b> <b>J. HOPKINS</b> <b>S. DAINES</b> <b>J. NOLAN</b>
<b>HOLE SIZE</b> 25" TO 256M 17 1/2" TO 879M 12 1/4" TO 2653M	<b>LITHOLOGY SYMBOLS</b> CLAY SHALE SILTSTONE SANDSTONE CONGLOMERATE COAL/LIGNITE MARBLE LIMESTONE DOLOMITE EVAPORITE VOLCANIC IGNEOUS/METAMORPHIC		
<b>CASING RECORD</b> 20" AT 236M 13 3/8" AT 861M	<b>COMPLETE LOG SUITE:</b> GEOLOGICAL AND HYDROCARBON MUD LOG <input checked="" type="checkbox"/> DRILLING DATA PRESSURE LOG <input checked="" type="checkbox"/> WIRELINE DATA PRESSURE LOG <input type="checkbox"/> GEMDAS COMPUTER LOGS <input checked="" type="checkbox"/> TEMPERATURE DATA LOG <input checked="" type="checkbox"/> PRESSURE ANALYSIS LOG <input checked="" type="checkbox"/>		

**EXPLORATION LOGGING**      **DRILLING DATA COMPANY: ESSO AUSTRALIA LTD.**  
**A SUBSIDIARY OF BAKER INTERNATIONAL**      **PRESSURE LOG**      **WELL: FORTESCUE NO.2**



DRILLERS T.D. 2653 M.