



DEPT. NAT. RES & ENV



TASMANIA - SOUTH COAST

MAP TO GABO ISLAND INCLUDING TASMANIA

DEPTHS IN FATHOMS

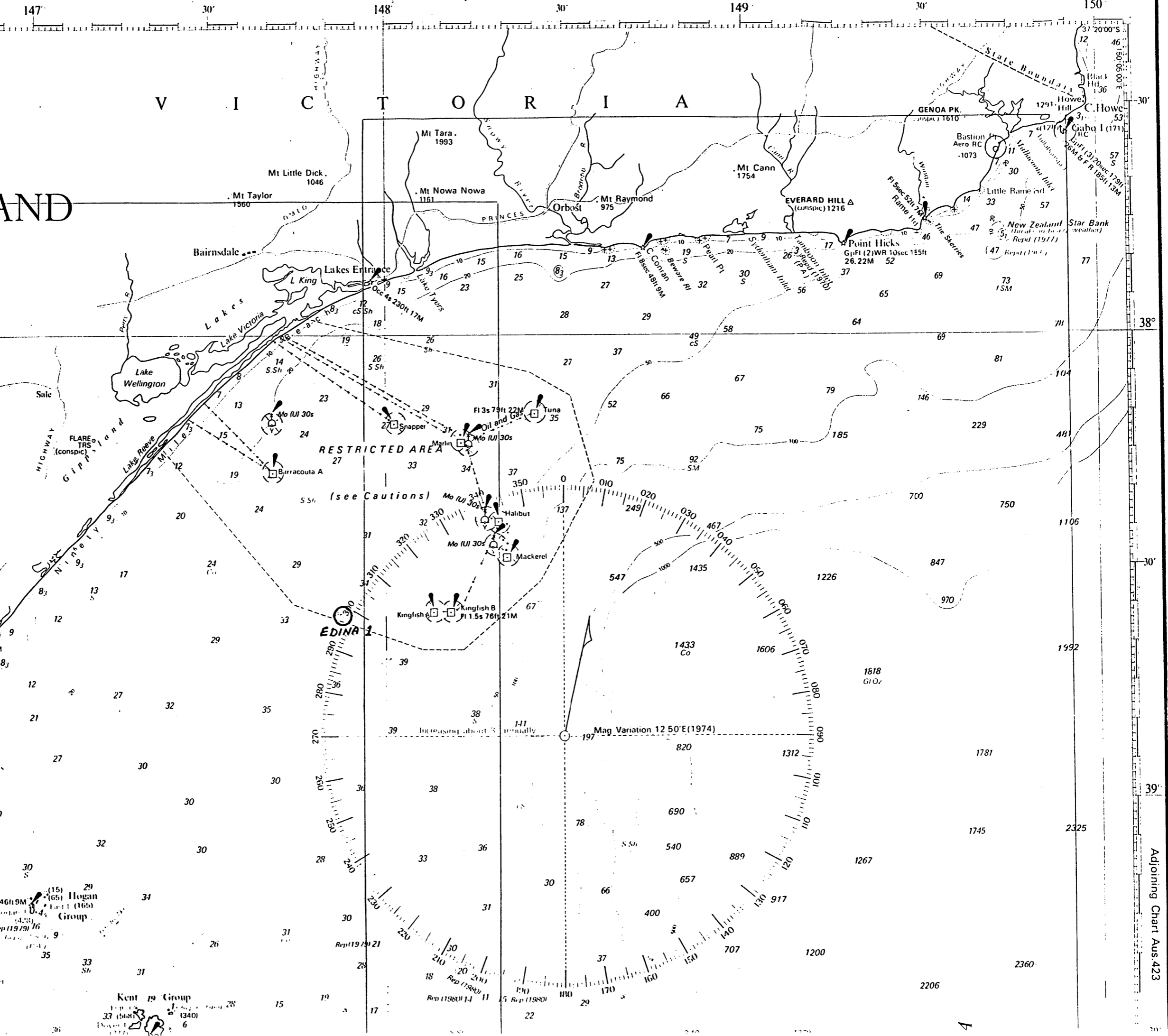
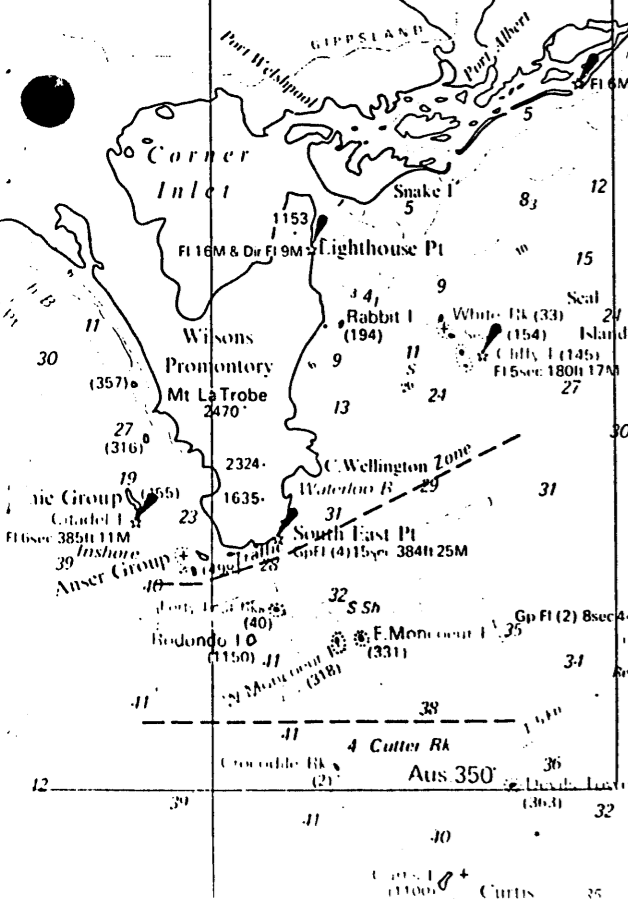
Scale 1:1,000,000 at lat. 27° 15' S

Depths (under eleven in fathoms and feet) are measured to Indian Spring Low Water. Depths in feet above Mean Higher High Water are indicated by a 'W'. Positions are related to the Australian datum.

Soundings are based on N. surveys to 1970, Admiralty surveys, seismic and passage soundings to 1970.

WELLS
 Abandoned structures: Temporarily abandoned wells may have wellhead gear projecting up to about 26 feet (8 metres) from the sea bed.
 Active wells: Submerged production wells are marked by light-buoys.

CAUTION - OMISSIONS In the areas covered by larger scale charts these must be consulted for buoys, lights, beacons and wrecks as on this chart only the principal aids to navigation are shown.
 Beach Hill 1877
 Breech Hill 1877



Adjoining Chart Aus. 423