

GEOGRAM*

(Synthetic Seismogram)

Company: ESSO AUSTRALIA LTD
Well: BLACKBACK #3
Field: BLACKBACK
Country: AUSTRALIA
Reference No: SVJ961011961012
Date Logged: 05 APR 1994
Date Processed: 12 APR 1994
Location: 088 31' 34.84" E
Elevation: 481 31' 00.50" E
Elevations: 481 24.70 OL - 318.60
Permanent Datum: MSL
Depth Units: METERS

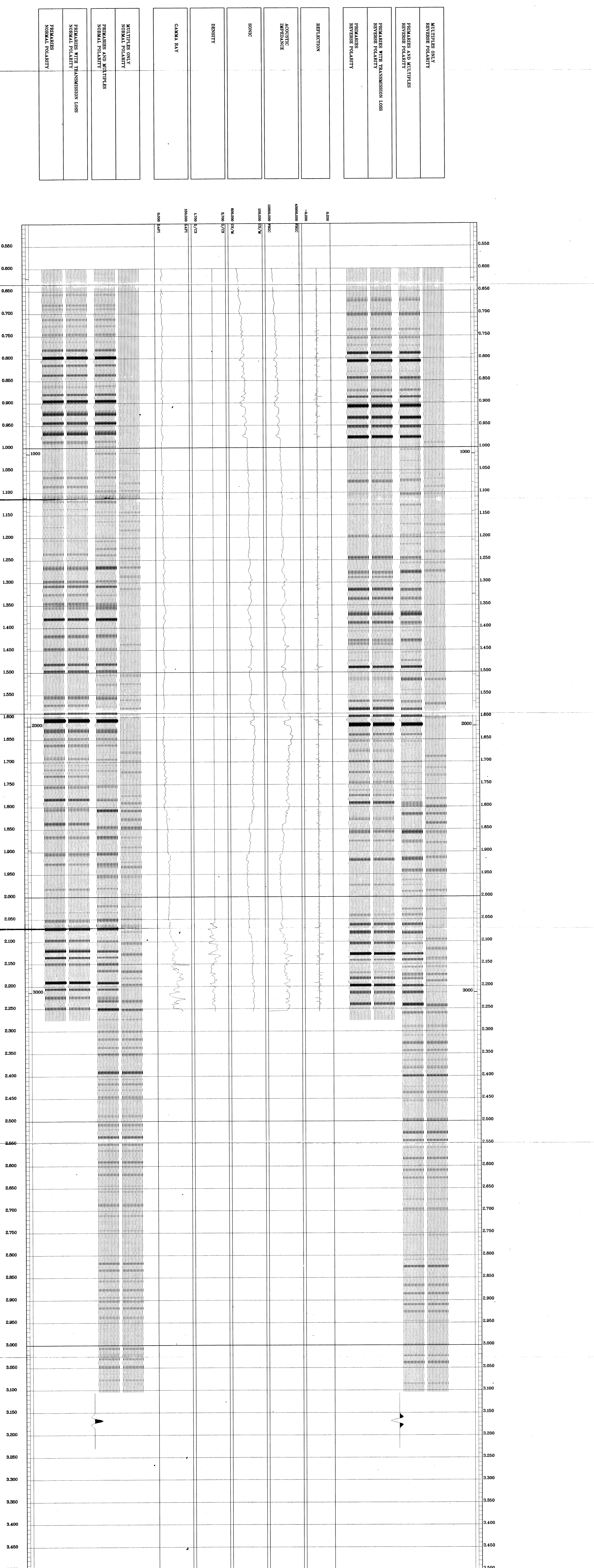
LOG INFORMATION
FIELD RECORD: Engineer: S. MANNING Location: VSA Program Version: 602-423
Completion: Analyst: A. WASSBOOM Core: STJ Machine: SLS
Logging Datum: ELEVATION ABOVE MEAN SEA LEVEL
25.00
Sample Interval: 0.100
Sonic Calibration by Check Shot: YES Sonic Edited by Analyst: YES
Two-Way Time Sample Interval: 2 ms Environment:

True Vertical Depth Corrections Applied:
Source of True Vertical Depth Data: 0
Maximum Hole Deviation:

Shot	Date	Time	Total Depth	Shot Depth	Shot Interval	Shot Interval	Shot Interval
1	01-04-84	AM 04:11	8479 M	2793 M	5686 M	5686 M	5686 M
1	01-04-84	LD 02:11	8479 M	2793 M	5686 M	5686 M	5686 M

GEOGRAM MODEL ASSUMPTIONS
Equal time after model of horizontal plane layers.
P-wave velocity values at normal incidence.
No fracture attenuation.
POLARITY
An upgoing wave, reflected by an increase in acoustic impedance with depth, is displayed as a white trough under normal polarity.
SIGNATURES
All signatures displayed in the Geogram results correspond to a wavelet convolved with a reflection coefficient of 0.5 (A decrease in acoustic impedance with depth).
H. HATHORN

**** GEOGRAM ****
**45 HERTZ ZERO PHASE
RICKER WAVELET**
VERTICAL SCALE = 40 CM/SEC



COMPANY ESSO AUSTRALIA LTD.
FIELD BLACKBACK
WELL BLACKBACK #3
COUNTRY AUSTRALIA

