

SEISMIC CALIBRATION LOG

(Adjusted Continuous Velocity Log)

Company: ESSO AUSTRALIA LTD.
Well: BLACKBACK #3
Field: BLACKBACK
County: AUSTRALIA

Reference No: SVJ561011561012 Interval: 3100.00 to 5000.00

Date Logged: 05-APR-1994 Date Processed: 12-APR-1994

Location: 038 31 34 84" S 148 31 05 50" E

Elevations: KB: 23.00 DP: 24.70 QL: 318.00

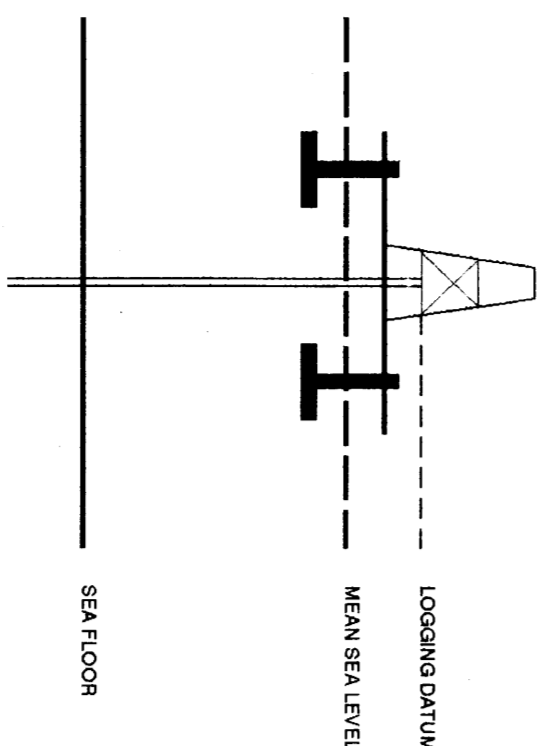
Permanent Datum: MSL Depth Units: METRES

FIELD RECORDING Engineer: S. NAKAMISHI Location: VEA Program Version: 505-423
COMPUTATION Analyst: A. WASSON Cards: 511 Blankets: 5 S

ELEVATION ABOVE MEAN SEA LEVEL

Logging Datum: 25.00

Seismic Reference Datum: 0.00



Total Number of Leads: 37

Depth Reference: SRD

Time Reference: SRD

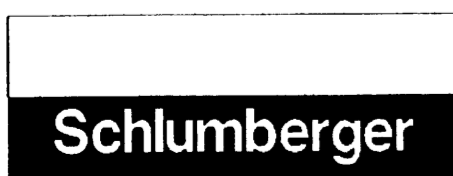
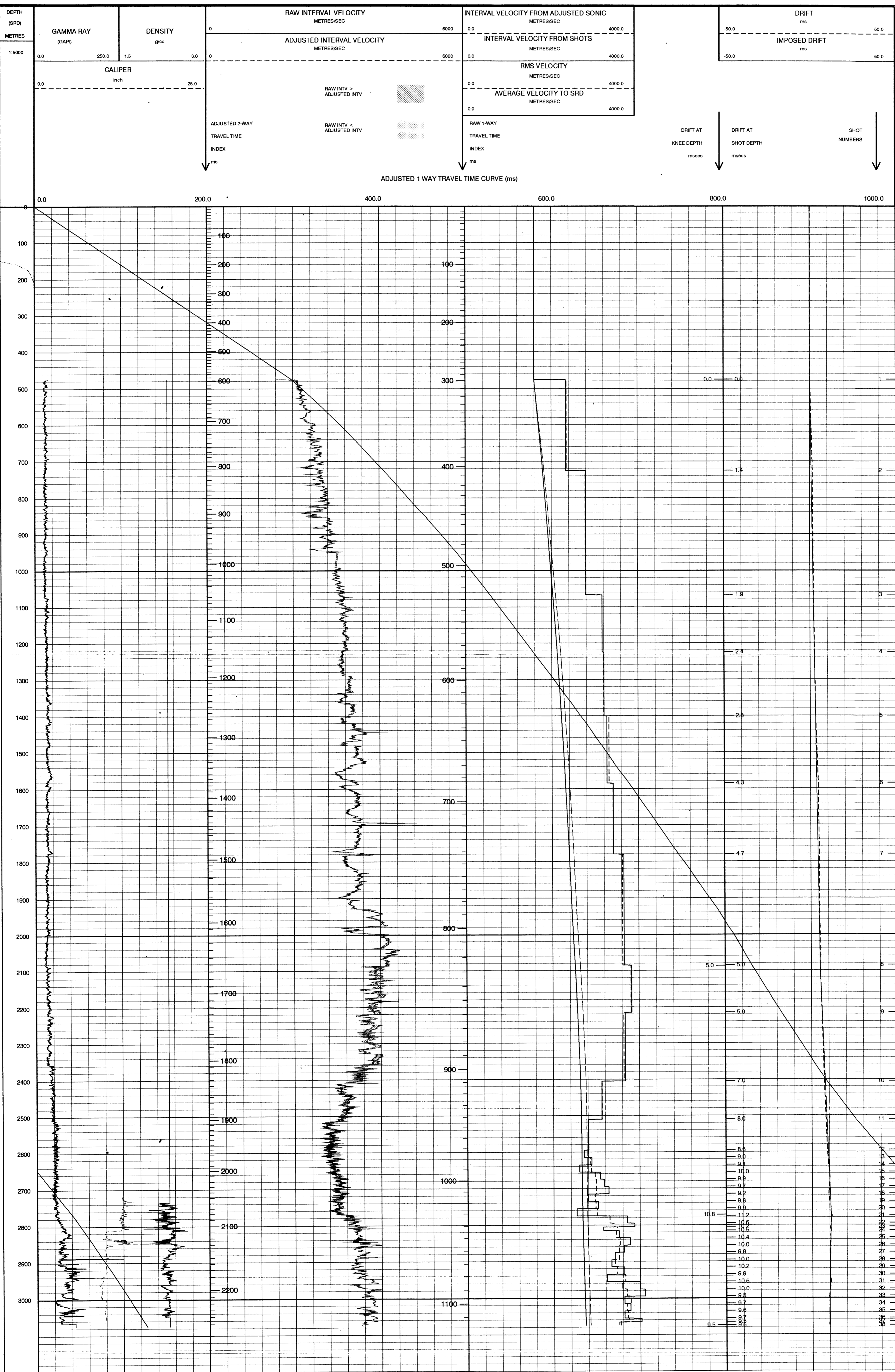
Run	Date	Tool Type	SRD Depth	SRD	Caliper Size	Top Depth	Bottom Depth
1	01-04-94	ARMATEL	8.875 IN	2750 M	2750 M	3068 M	3068 M
1	01-04-94	LOG-CENT	8.875 IN	2750 M	2750 M	3067 M	3067 M

SRD	Caliper Size	Top Depth	Bottom Depth
8.875 IN	2750 M	3068 M	3068 M
8.875 IN	2750 M	3067 M	3067 M

REMARKS

The well name, location and borehole reference data were furnished by the customer.

All interpretations are opinions based on inferences from electrical or other measurements and we cannot, and do not guarantee the accuracy or correctness of any interpretations, and we shall not, except in the case of gross or willful negligence on our part be liable or responsible for any loss, costs, damages or expenses incurred or sustained by anyone resulting from any interpretations made by any of our officers, agents or employees. These interpretations are also subject to Clause 4 of our General Terms and Conditions as set out in our current Price Schedule.



COMPANY ESSO AUSTRALIA LTD.
FIELD BLACKBACK
WELL BLACKBACK #3
COUNTRY AUSTRALIA