

BLACKBACK-1 SIDETRACK 2

SYNTHETIC SEISMOGRAM



QUIKLOG REV: 1.2 1987
 SIERRA GEOPHYSICS, INC.
 22-JUN-90 09:05
 BLACKBACK-1-ST2-A-2

BLACKBACK-1-ST2-A
 DERIVED FROM DRIFT CORRECTED SONIC

***** WELL LOG DESCRIPTION *****

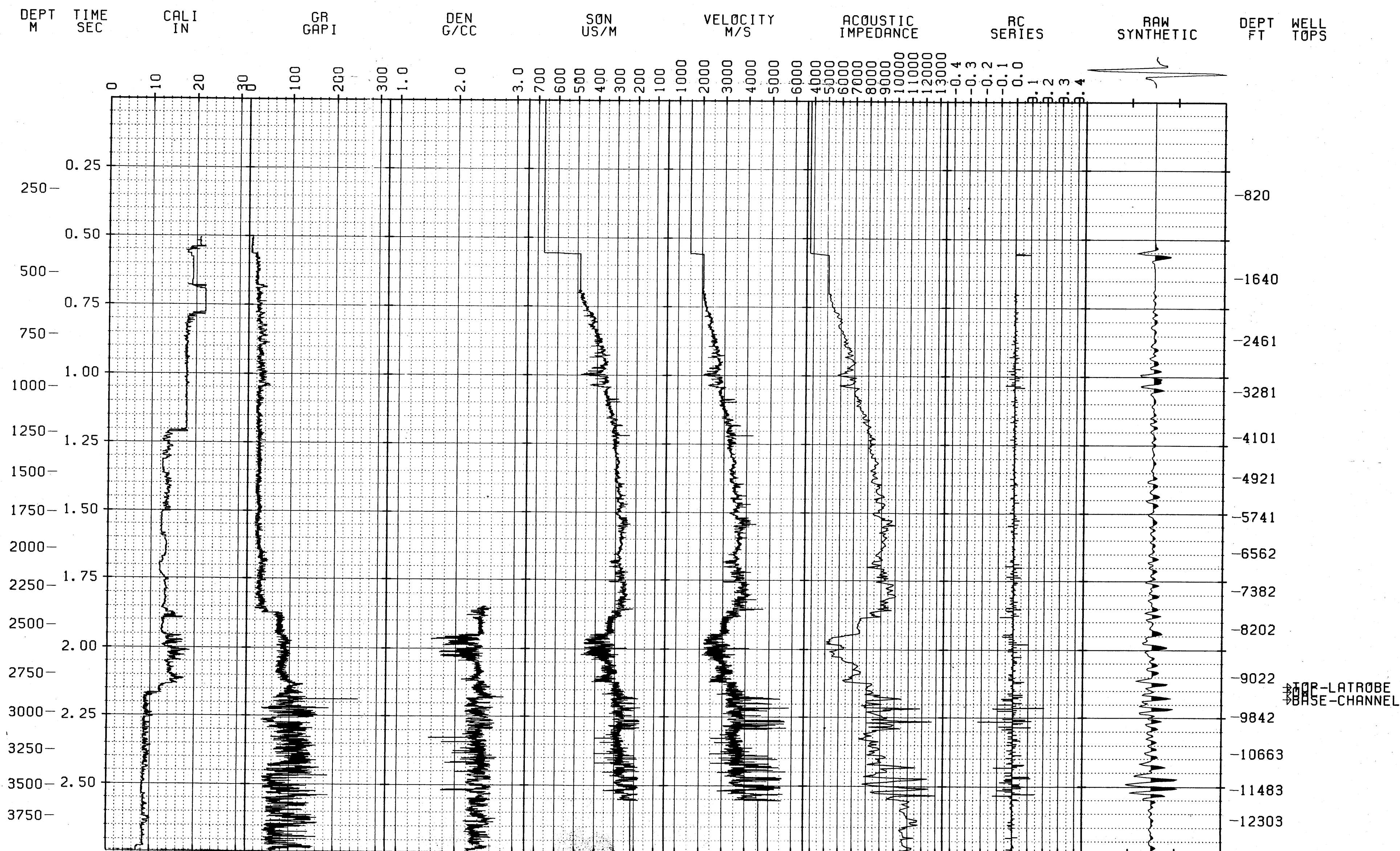
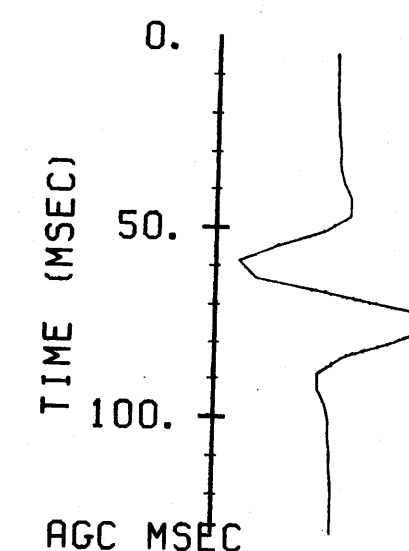
KELLY BUSHING HEIGHT = 0.000 METERS ABOVE SEA LEVEL
 GROUND ELEVATION = 0.000 METERS ABOVE SEA LEVEL
 SEISMIC DATUM = 0.000 METERS ABOVE SEA LEVEL
 STARTING DEPTH = 1.00 METERS
 ENDING DEPTH = 0.403E+04 METERS
 SAMPLED DEPTH INTERVAL = 0.200 METERS

***** PROCESSING SEQUENCE *****

DENSITY MODEL = DENSITY CURVE
 WAVELET TYPE = RICKER (ZERO-PHASE)
 WAVELET LENGTH = 124. MSEC
 WAVELET MAX. AMP. = 1.00
 WAVELET MIN. AMP. = -1.00
 WAVELET CENTER FREQUENCY = 28.0 HZ
 POLARITY = NEGATIVE
 CLIPPING LEVEL = 4.000
 TRACE OVERLAP = 2.0000
 WHITE NOISE PERCENTAGE = 0.0
 MULTIPLES INCLUDED = NO
 SEQ FILTER CORNER FREQUENCIES TOLERANCES

***** PLOTTING PARAMETERS *****

TIME SAMPLE INTERVAL = 4.00 MSEC
 HORIZONTAL SCALE = 2.00 INCH/LOG
 VERTICAL SCALE = 3.94 INCH/SEC
 STARTING TIME = 1.33 MSEC
 ENDING TIME = 0.274E+04 MSEC



TOP-LATROBE
 BASE-CHANNEL