

Schlumberger **Check Shot Survey**

# VELOCITY CROSS PLOT

**Company:** Cultus Petroleum NL  
**Well:** Baleen-2  
**Field:** Patricia-Baleen  
**Country:** AUSTRALIA  
**SRD:** MSL  
**Job Ref No.:** 561295/561296

**Source Type:** Airgun  
**Offset:** 40 m  
**Azimuth:** 207 deg.

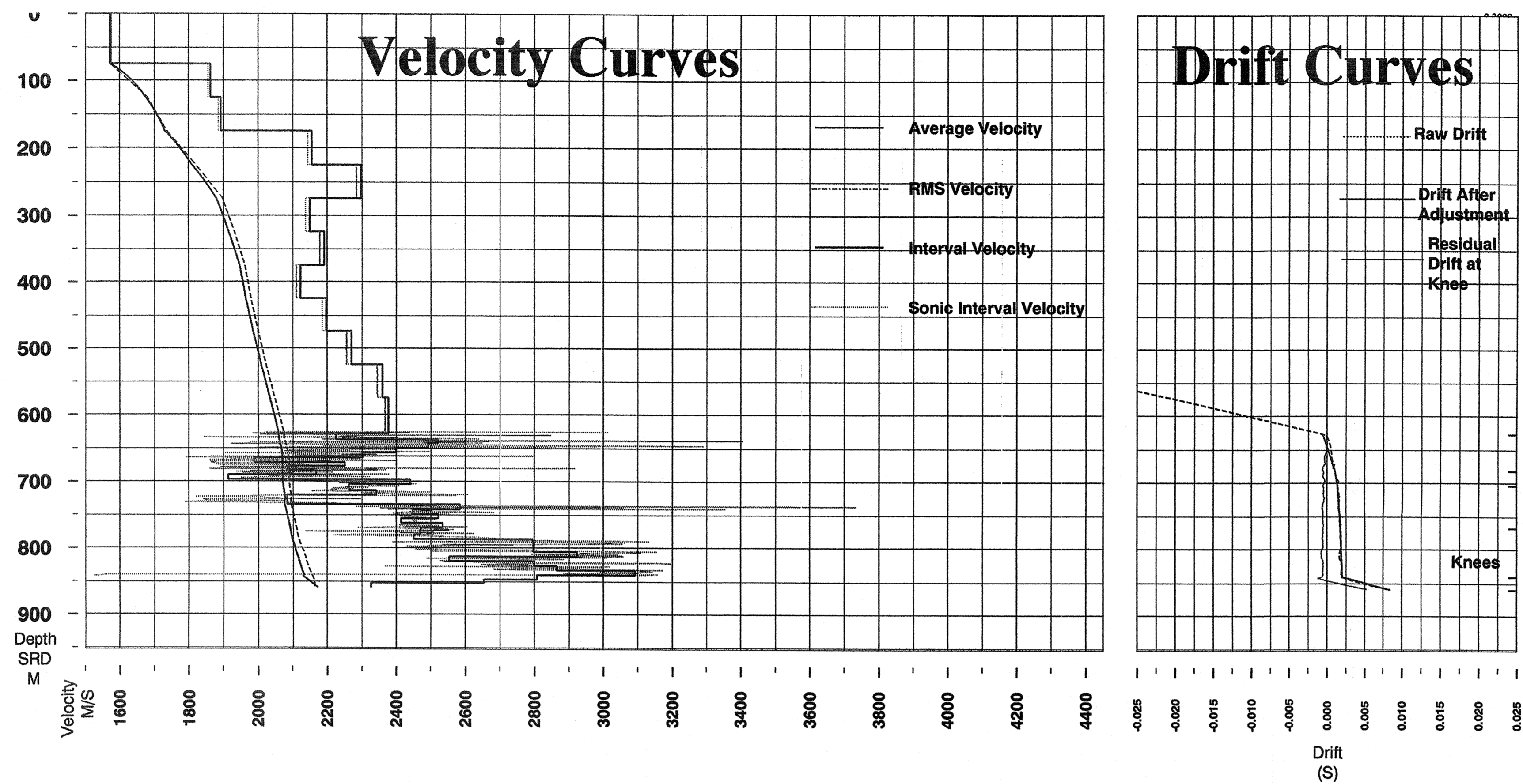
Plot #9 Velocity Crossplot

**Processing Steps:**

- (1) Load Data
- (2) Edit Bad Records
- (3) Z Component Median Stack
- (4) Peak Break Time
- (5) Bandpass Filter : 5-140 HZ
- (6) Time Varying Gain : (1/T0)
- (7) Static Shifting to SRD : 0.0059 S
- (8) Wavefield Separation  
(Mean Filter, 9 Levels, 1 Sample)
- (9) Waveshaping Deconvolution  
Decon Operator Created by Filtered Unit Impulse, 5-80 HZ  
Filter Length : 2 S)
- (10) Upgoing Wavefield Enhancement  
(Median Filter, 7 Levels, 1 Sample)
- (11) Corridor Stack : 0.2 S Window  
(All Traces Except the Deepest 5)
- (12) Sonic Editing
- (13) Sonic Adjustment to VSP Transit Time  
(Convolution of Reflection Coefficient with Zero Phase Ricker Wavelet : 40 HZ  
Zero Phase Ricker Wavelet : 50 HZ  
Zero Phase Ricker Wavelet : 60 HZ)

**Display Parameters:**

Depth Scale: 1:50000  
 trace offset: Vertical Depth



Observed Time (s)	Vertical Time From SRD (s)	Vertical Depth From SRD (m)	Measured Depth From KB (m)	Shot Number
0.048	0.043	74.0	100.0	1
0.097	0.096	174.0	200.0	3
0.141	0.141	274.0	300.0	5
0.187	0.187	374.0	400.0	7
0.233	0.234	474.0	500.0	9
0.276	0.277	574.0	600.0	11
0.302	0.304	637.0	663.0	12
0.308	0.309	650.0	676.0	13
0.315	0.315	664.0	690.0	14
0.320	0.321	679.0	703.0	15
0.325	0.327	694.0	716.0	16
0.332	0.334	710.0	730.0	17
0.339	0.341	720.0	746.0	18
0.349	0.350	739.0	769.0	19
0.354	0.355	755.0	781.0	20
0.360	0.361	769.0	795.0	21
0.367	0.368	785.0	812.0	22
0.374	0.375	805.0	831.0	23
0.379	0.380	819.0	845.0	24
0.384	0.385	831.0	859.0	25
0.388	0.389	846.0	873.0	26