



Schlumberger Vertical Seismic Profile Profile

COMPOSITE DISPLAY

Company: Cultus Petroleum NL
 Well: Baleen-2
 Field: Patricia-Baleen
 State: Victoria
 Country: Australia
 SRD: MSL
 Job Ref No.: 561295/561296

Source Type: Airgun
 Offset: 40 m
 Azimuth: 207 deg.

Correlation Curve GAMMA RAY

Correlation Curve INDUCTION RESISTIVITY

Correlation Curve NEUTRON POROSITY

Correlation Curve DENSITY

SONIC INTERVAL VELOCITY

ACOUSTIC IMPEDANCE

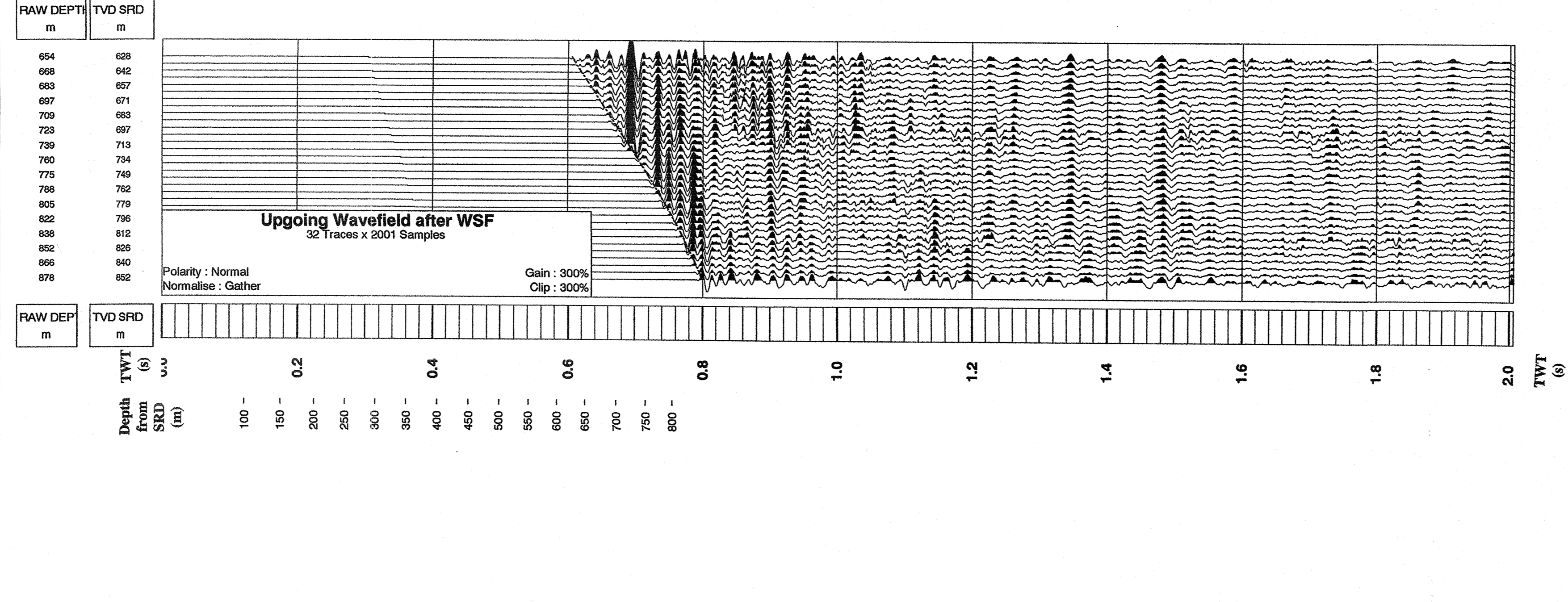
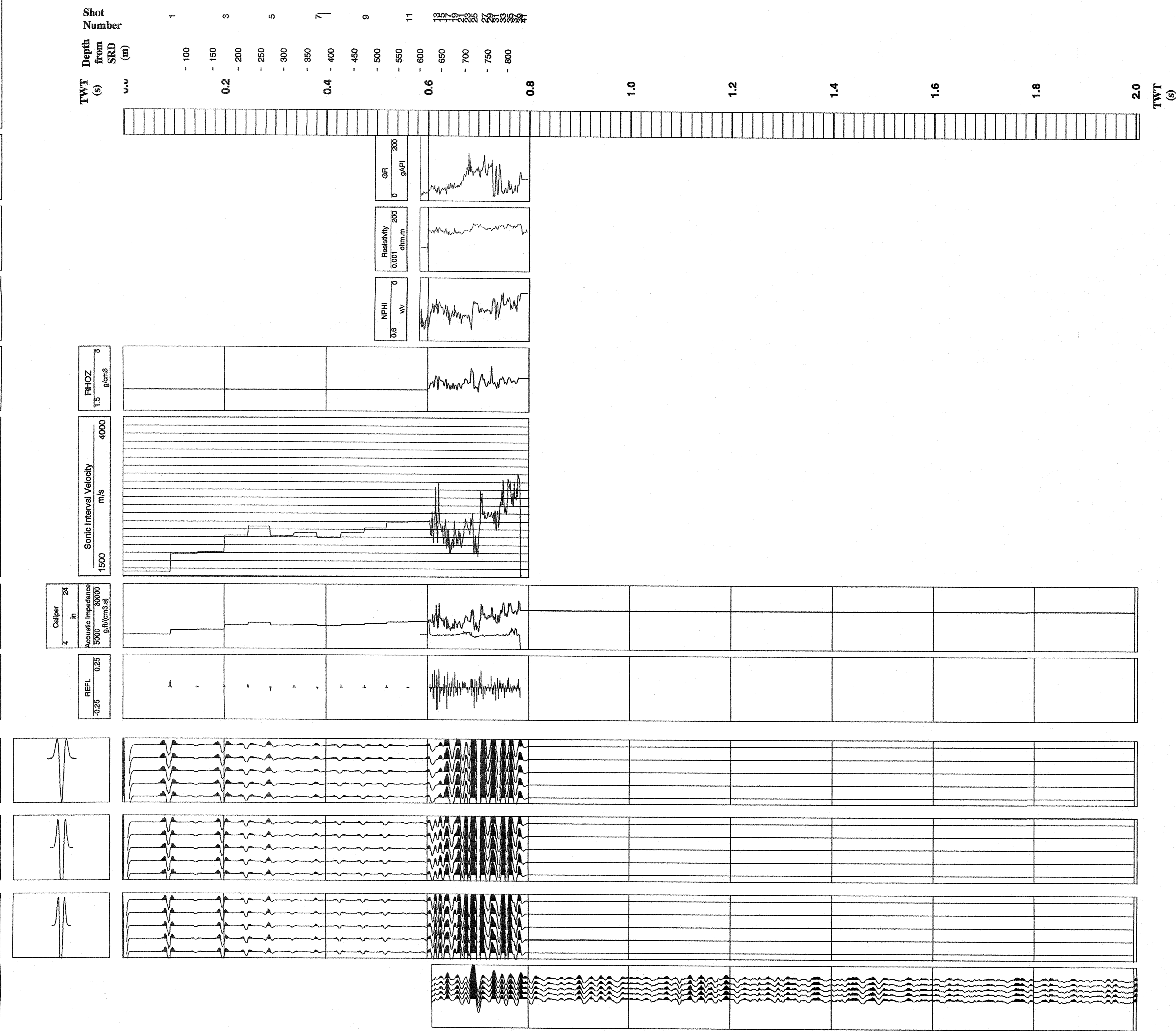
REFLECTION COEFFICIENT

Zero Phase Ricker Wavelet 40 HZ
 Increase in Acoustic Impedance is a Trough

Zero Phase Ricker Wavelet 50 HZ
 Increase in Acoustic Impedance is a Trough

Zero Phase Ricker Wavelet 60 HZ
 Increase in Acoustic Impedance is a Trough

Corridor Stack 200 ms corridor
 Increase in Acoustic Impedance is a Trough



Plot #6 Composite Display (Normal Polarity)

Processing Steps:

- (1) Load Data
- (2) Edit Bad Records
- (3) Z Component Median stack
- (4) Peak Break Time
- (5) Bandpass Filter : 5-140 HZ
- (6) Time Varying Gain : (1/T0)
- (7) Static Shifting to SRD : 0.0059 S
- (8) Wavefield Separation (Mean Filter, 9 Levels, 1 Sample)
- (9) Waveshaping Deconvolution (Decon Operator Created by Filtered Unit Impulse, Bandwidth : 5-80 HZ, Filter Length : 2.5 S)
- (10) Upgoing Wavefield Enhancement (Median Filter, 7 Levels, 1 Sample)
- (11) Corridor Stack : 0.2 S Window (All Traces Except the Deepest 5)
- (12) Sonic Editing
- (13) Sonic Adjustment to VSP Transit Time
- (14) Synthetic Seismograms Calculation (Convolution of Reflection Coefficient with Zero Phase Ricker Wavelet : 40 HZ, Zero Phase Ricker Wavelet : 50 HZ, Zero Phase Ricker Wavelet : 60 HZ)

Display Parameters:
 Scale: 20 cm/s
 Normal Polarity: Increase in Acoustic Impedance is a Trough