

ENCLOSURE 3



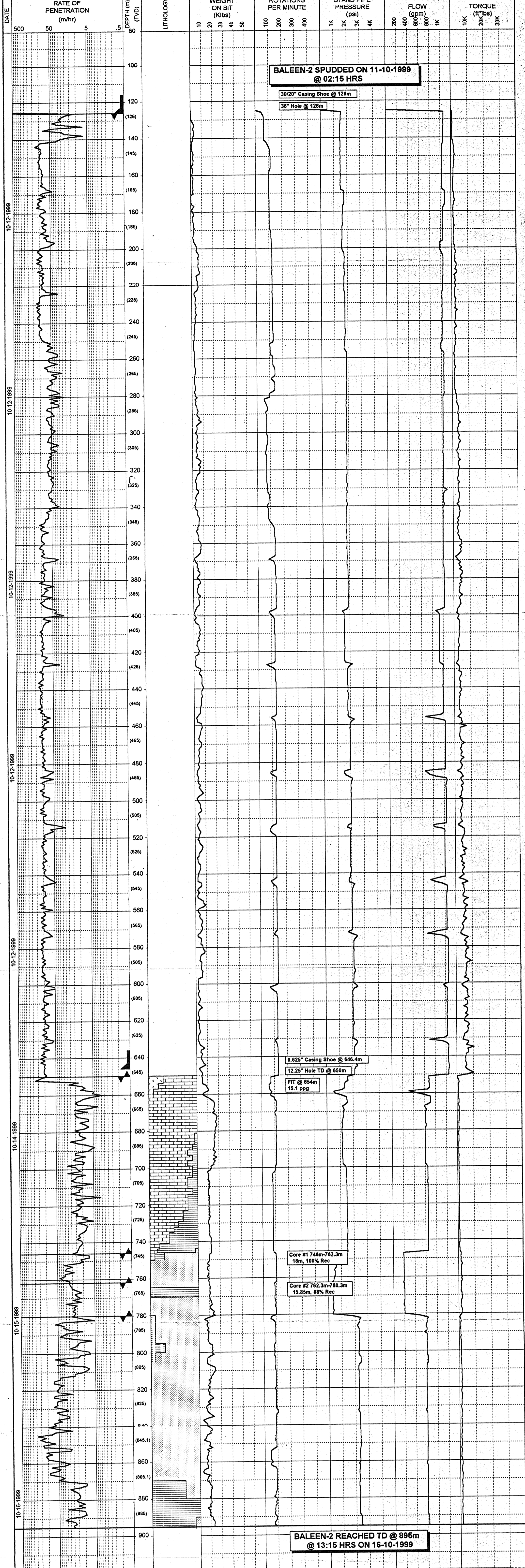
DEPT. NAT. RES & ENV
PE907964

DRILLING DATA LOG

BALEEN-2



From (m) : 80 To : 920 Scale 1/1000



BALEEN-2 SPUDED ON 11-10-1999 @ 02:15 HRS

30/20" Casing Shoe @ 126m

36" Hole @ 126m

9.625" Casing Shoe @ 646.4m

12.25" Hole TD @ 650m

FIT @ 654m
15.1 ppg

Core #1 746m-762.3m
16m, 100% Rec

Core #2 762.3m-780.3m
15.85m, 88% Rec

BALEEN-2 REACHED TD @ 895m @ 13:15 HRS ON 16-10-1999