

ENCLOSURE 2



FORMATION EVALUATION LOG



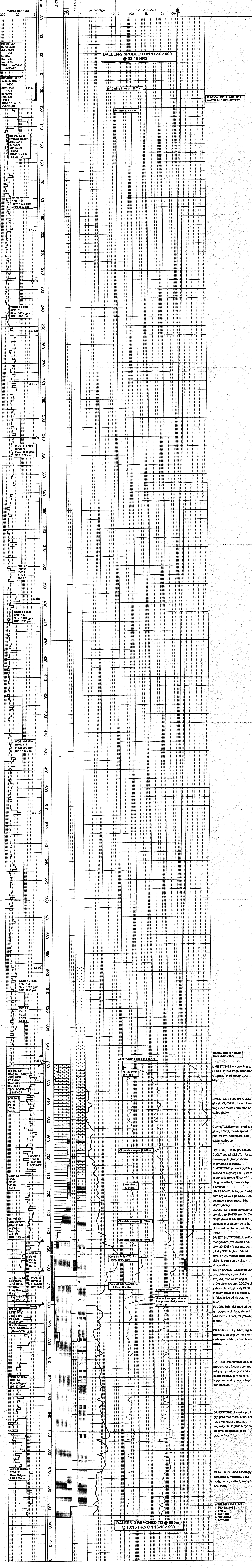
BALEEN-2

PE907963

FROM (m): 80 TO (m): 920 SCALE: 1/500

Country : AUSTRALIA	Latitude : 38° 01' 55.8" S	36" Hole Depth 126.0 m	Spud Date : 11-10-1999 @ 02:15 hrs
Permit : VIC/RL5	Longitude : 148° 24' 37.5" E	30/20" Casing Shoe at 125.7 m	TD Date : 16-10-1999 @ 13:15 hrs
Prospect : Baleen	Easting (m) : 623 781.4 mE	12 1/4" Hole Depth 650.0 m	Total Depth (m) : 895
Region : Bass Strait	Northing (m) : 5 789 663.9 mS	9 5/8" Casing Shoe at 646.4 m	Total Vert Depth (m): 895
Well Type : Appraisal	RT-MSL (m) : 25.9	8 1/2" Hole Depth 895.00m	Completion Status: PLUGGED & ABANDONED
Rig Name : SEDCO 702			

ABBREVIATIONS		LITHOLOGY LEGEND		ENGINEERING LEGEND
MV Mud Weight (ppg)	NB New Bit	LIMESTONE	FOSSILS	M MICA
FV Fluid Viscosity	RR Re-Run Bit	COAL	FORAMINIFERA	MUSCOVITE
PV Plastic Viscosity	CB Core Bit	CLAYSTONE	CARB FRAG	BIOTITE
YP Yield Point	WOB Weight on Bit (kibs)	SHALE	FELDSPAR	LITHIC REVS
FC Filter Cake	RPM Revs per Minute	SILTSTONE	SIDERITE	DOL CMT
SOL Solids	SPP Pump Pressure (psi)	SHALE	IRON	CEMENT
VL Filtrate	FW Flowrate (gpm)	SST: F-V FINE	PYRITE	CALCAREOUS CMT
GI Geis	PR Partial Returns	SST: MEDIUM	GLAUCONITE	
S Salinity - ppm	NR No Returns	SST: COARSE		
RM Mud Resistivity	BG Background Gas			
RFM Mud Filtrate	TG Trip Gas			
C Cable Test	STG Short Trip Gas			
LAT Logged After Trip	CG Connection Gas			
DS Deviation Survey	SG Swab Gas			
	SVG Survey Gas			



WIRELINE LOG RUNS

- 1) PEX-DS-NGS
- 2) PMS-GR
- 3) MDT-GR
- 4) VSP-CSAT
- 5) MDT-GR