

17 AUG 1983

OIL & GAS DIVISION

Enclosure 8 SYNTHETIC SEISMOGRAM REPORT.

PHILLIPS  
PETROLEUM  
COMPANY  
FAR EAST  
COMPOSITE  
LOG - SYNTHETIC

DEPT. NAT. RES & ENV  
PE603715

WELL: PHILLIPS AUSTRALIA  
ATHENE #1

LOCATION: GIPPSLAND BASIN  
S. 38° 35' 52.188"  
E. 148° 27' 28.628"

LINE G72A-601  
SP 1809

LOGS:

GAMMA RAY  
RESISTIVITY (RILD)  
(FROM ENCLOSURE 7)

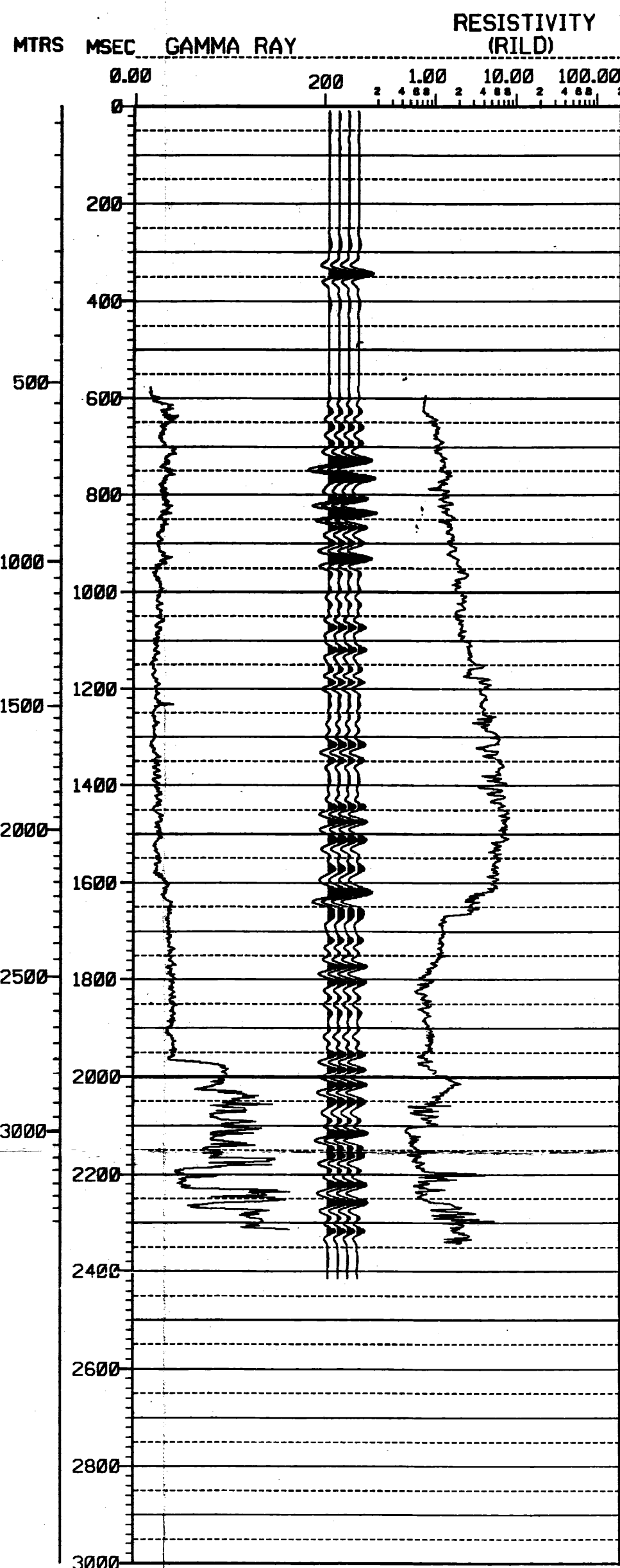
SYNTHETIC:  
BUTTERWORTH WAVELET 7-10-40-57 HZ  
ZERO PHASE  
POSITIVE POLARITY  
(FROM ENCLOSURE 4)

GENERATED BY: W.C. ADE

DATE: JULY 1983

SEISMIC  
STRATIGRAPHY  
SECTION  
SINGAPORE

ATHENE 1  
SYNTHETIC  
SEISMOGRAM



ATHENE 1  
SYNTHETIC  
SEISMOGRAM

