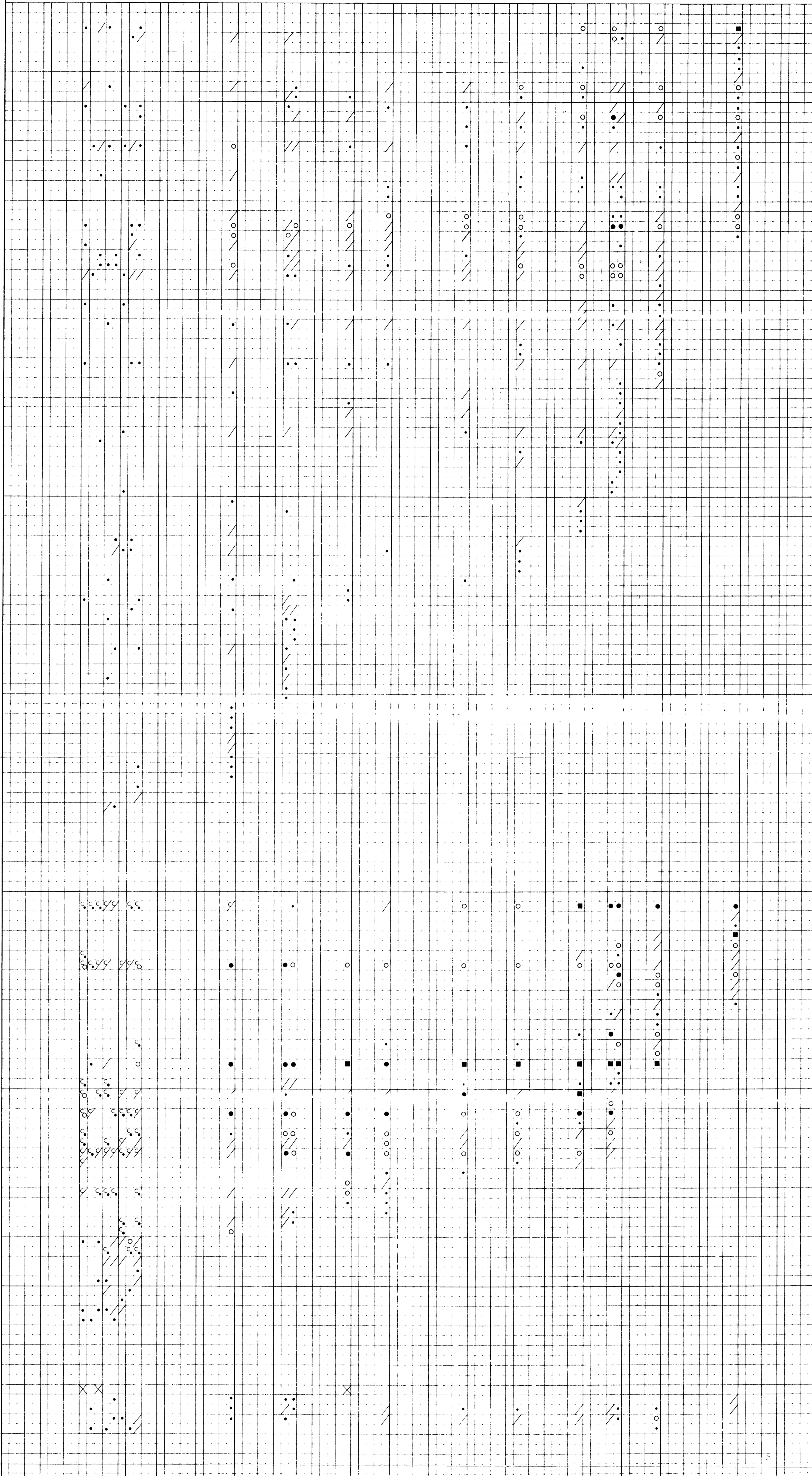


**BARREN SAMPLE**

- BENTHIC FORAMINIFERA**
- Buuvigerina peregrina group
  - Globocassidulina subglobosa
  - Callanthus craticulatus
  - Lagena apiculata
  - Quadrum spp.
  - Plectofrondicularia spp.
  - Cibicides medicris
  - Pleurotonella spp.
  - Anomalinoidea spp.
  - Trifarina bradyi
  - Lagenodosaria spp.
  - Textularia cf. semicarinata
  - Cibicides spp.
  - Bulimina cf. striata
  - Globobulimina pacifica
  - Gyroidina spp.
  - Pullenia quinqueloba
  - Lagenodosaria scalaris
  - Indeterminate agglutinates
  - Cassidulina laevigata
  - Brizalina spp.
  - Fissurina spp.
  - Nodosaria spp.
  - Siphonina australis
  - Sphaeroidina bulloides
  - Lenticulina spp.
  - Planulina aff. wuellerstorfi
  - Gyroidina aff. zelandica
  - Indeterminate nodosarids
  - Notorotalia spp.
  - Siphovigerina proboscidea
  - Valvulineria spp.
  - Siphovigerina interrupta
  - Planulina spp.
  - Pullenia bulloides
  - Bulimina aff. striata
  - Bulimina aculeata
  - Nonionella spp.
  - Ramulina spp.
  - Buuvigerina miozea
  - Eponides aff. praecinctus
  - Quinqueloculina spp.
  - Anomalia procolligera
  - Glandulina spp.
  - Pyralina aff. cylindroides
  - Melonis aff. pomilioides
  - Bolivinita aff. compressa
  - Indeterminate agglutinates
  - Textularia spp.
  - Karreria maoria
  - Spiroloculina spp.
  - Globocassidulina spp.
  - Hoeglundina cf. elegans
  - Haplophragmoides spp.
  - Astacolus spp.
  - Baggina philippensis
  - Lagena spp.
  - Gyroidina zelandica
  - Hanzawaia spp.
  - Cassidulina delicata
  - Osangularia spp.
  - Lagena squamosa
  - Buliminella spp.
  - Hyperamina spp.
  - Buuvigerina spp.
  - Vaginulina spp.
  - Indeterminate rotalids
  - Lagena aff. paucicostata
  - Heronallenia lingulata
  - Callanthus aff. craticulatus
  - Ammobaculites spp.
  - Guttulina spp.
  - Buuvigerina spp. (small)
  - Hanzawaia aff. sumitomoii
  - Lagena paucicostata
  - Cassidulinoides bradyi
  - Heronallenia spp.
  - Dentalina spp.
  - Cassidulina spp.
  - Bathysiphon angleseaensis

- PLANKTONIC FORAMINIFERA**
- Orbulina universa
  - Globorotalia conica
  - Globoquadrina altispira
  - Globorotalia inflata group
  - Globigerina woodi decoraperta
  - Globigerinoides spp.
  - Globigerinoides trilobus
  - Globigerina bulloides
  - Globorotalia scitula
  - Hastigerina aequilateralis
  - Globorotalia acostaensis
  - Globorotalia miotumida
  - Globorotalia conomiozea
  - Globorotalia miozea conoidea
  - Globorotalia menardii group
  - Globorotalia miozea sphericomiozea
  - small planktonics
  - Turborotalia cf. mayeri
  - Globoquadrina dehiscens s.s.
  - Turborotalia mayeri
  - Globigerina bulloides/praebulloides
  - Globigerina woodi woodi
  - Orbulina bilobata
  - Globorotalia miozea miozea
  - Globigerina praebulloides
  - Globorotalia praescitula
  - Globorotalia miocenica
  - Globorotalia cf. miozea conoidea
  - Orbulina suturalis
  - Globigerinoides sicanus
  - Praeorbulina glomerosa
  - Globigerina advena
  - Globigerina woodi connecta
  - Turborotalia bella
  - Subbotina angiporoides
  - Globoquadrina dehiscens s.l.
  - Globigerina euapertura
  - Chiloquembelina cubensis
  - Turborotalia gemma
  - Globigerina spp.
  - ?Subbotina linaperta
  - Subbotina linaperta
  - Subbotina angiporoides minima

- OTHER SKELETAL MATERIAL**
- Echinoid debris
  - Ostracods
  - Sponge spicules
  - Fish teeth



**LEGEND**

**ENVIRONMENT OF DEPOSITION**

- ON : OUTER NERITIC
- UB : UPPER BATHYAL
- UM : UNDIFFERENTIATED MARINE
- UN : UNDIFFERENTIATED NERITIC

**QUANTITATIVE SYMBOLS**

- : 1 SPECIMEN
- / : 2-5 SPECIMENS
- : 6-20 SPECIMENS
- : 21-99 SPECIMENS
- : > 100 SPECIMENS
- X : BARREN
- c : CONTAMINATED

INTERNATIONAL STRATIGRAPHIC CONSULTANTS PTY. LTD

PETROFINA EXPLORATION AUSTRALIA S.A.

VIC P/20, GIPPSLAND BASIN

**MICROPALAEONTOLOGICAL DISTRIBUTION CHART**

**ARCHER # 1**

VERTICAL SCALE 1:5000

AUTHOR: J.BEXILLUS

DRAFTED: A.C.FINCH



From N.L.R. Archer-1 No.1.