

Plate 7: 4070 m (Campanian Siltstone) Reflected Light  
Thucholite (top centre) occurs adjacent to vitrinite (grey) in this siltstone.  
Field Dimensions: 0.26 x 0.18 mm.

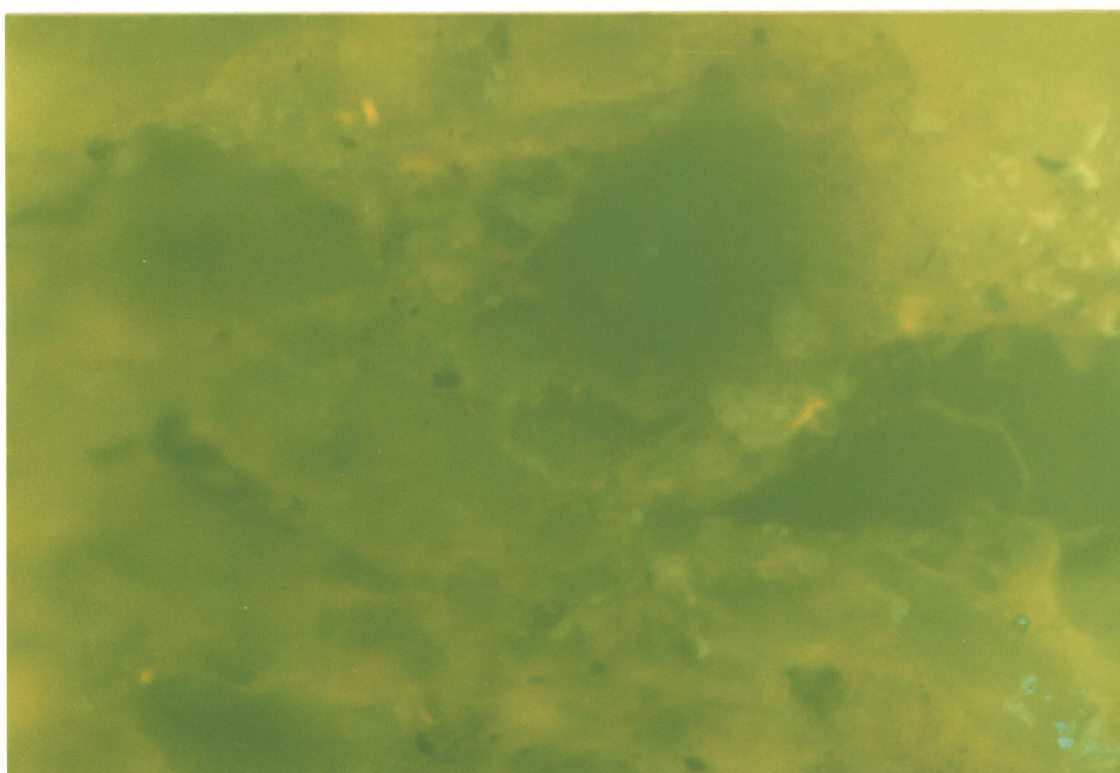


Plate 8: Same Field as above. Fluorescence Mode  
The thucholite has a dull brown fluorescence.