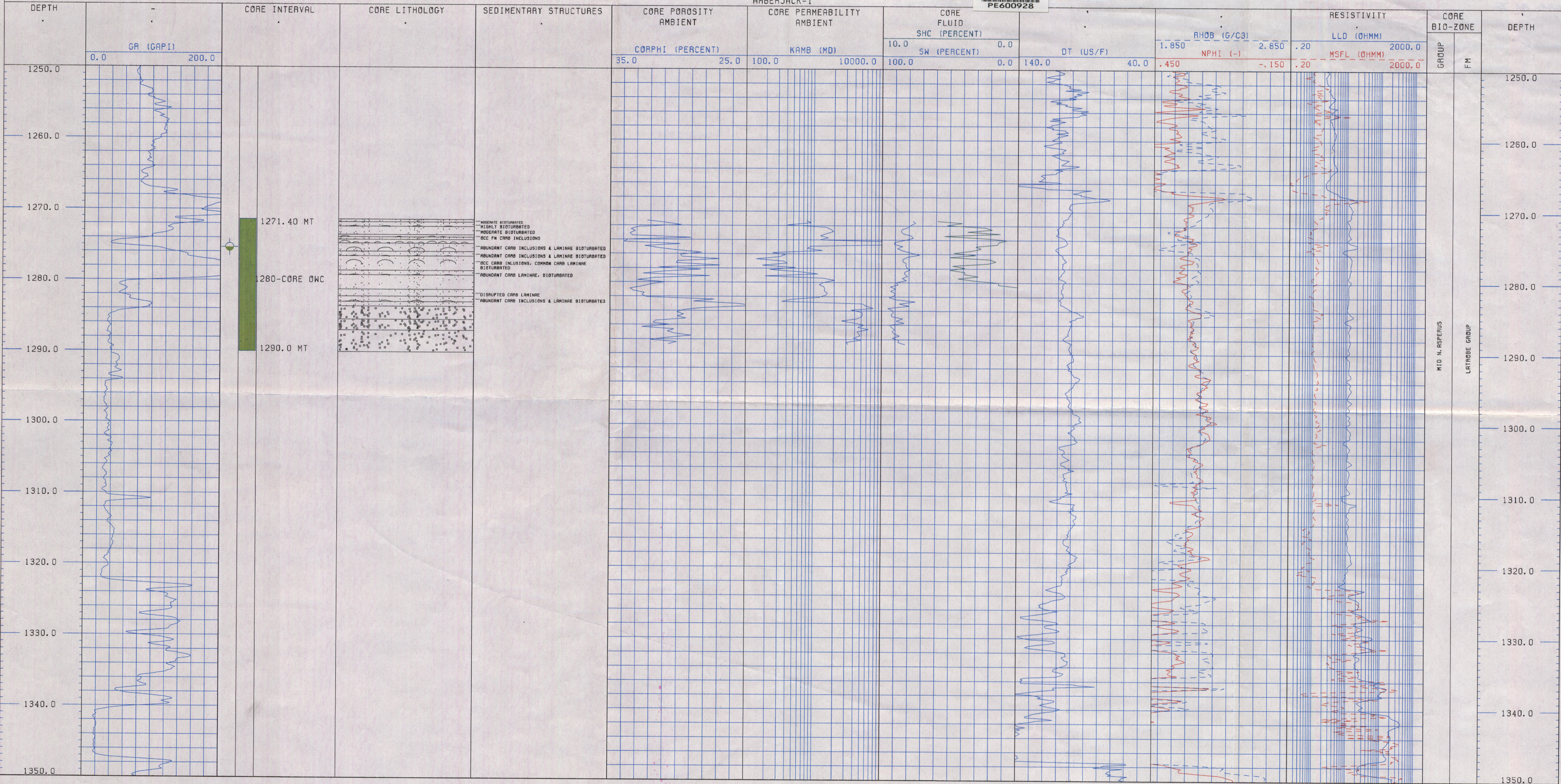


WELL: CORE / COMPOSITE: AMBERJACK-1
AMBERJACK-1

DEPT. NAT. RES & ENV
PE600928



1271.40 MT
1280-CORE OWC
1290.0 MT

MODERATE BIOTURBATED
HIGHLY BIOTURBATED
MODERATE BIOTURBATED
OCC FM CARB INCLUSIONS
ABUNDANT CARB INCLUSIONS & LAMINAE BIOTURBATED
ABUNDANT CARB INCLUSIONS & LAMINAE BIOTURBATED
OCC CARB INCLUSIONS, COMMON CARB LAMINAE BIOTURBATED
ABUNDANT CARB LAMINAE, BIOTURBATED
DISRUPTED CARB LAMINAE
ABUNDANT CARB INCLUSIONS & LAMINAE BIOTURBATED

MID N. ASPERUS
LATROBE GROUP

1350.0