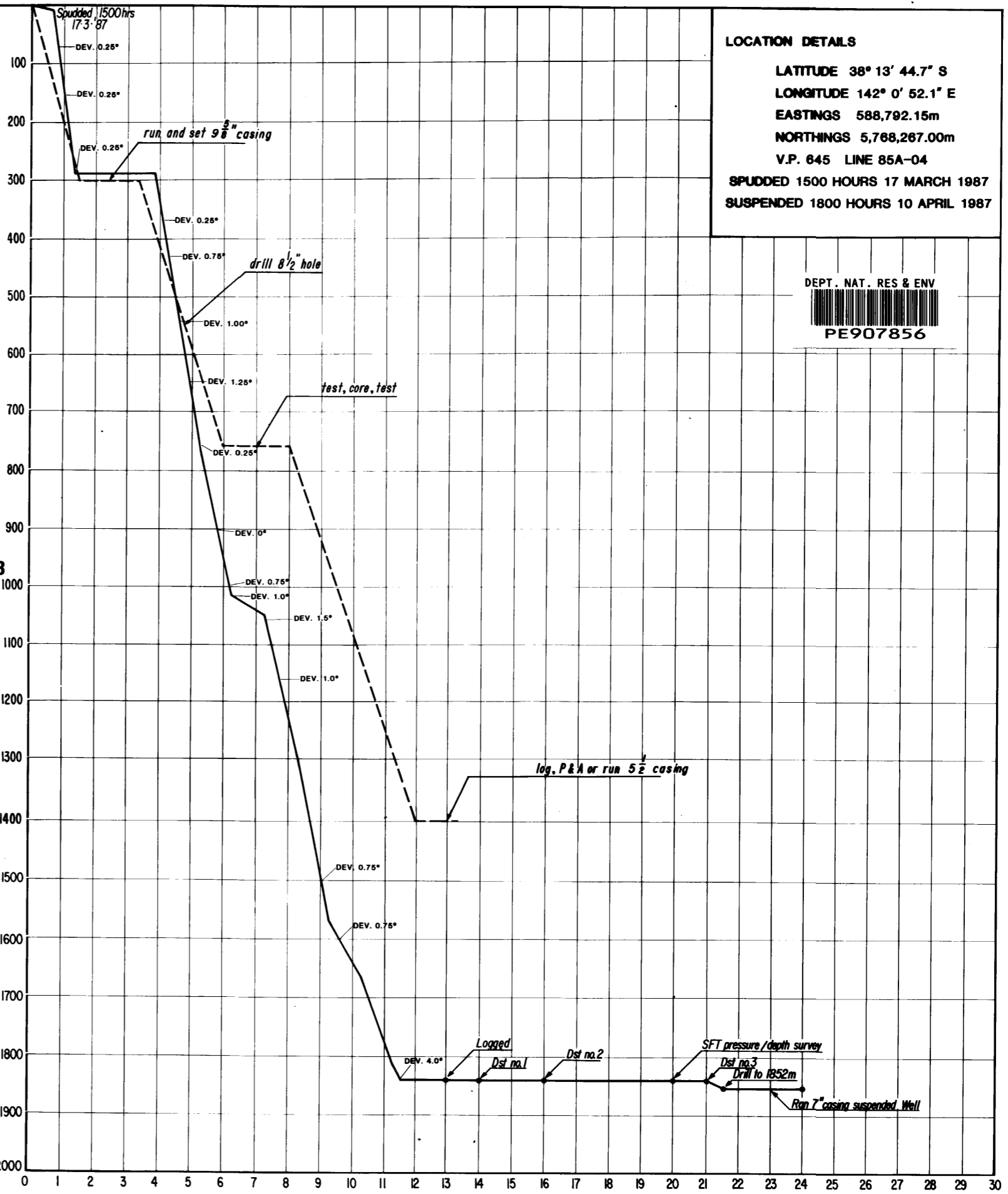
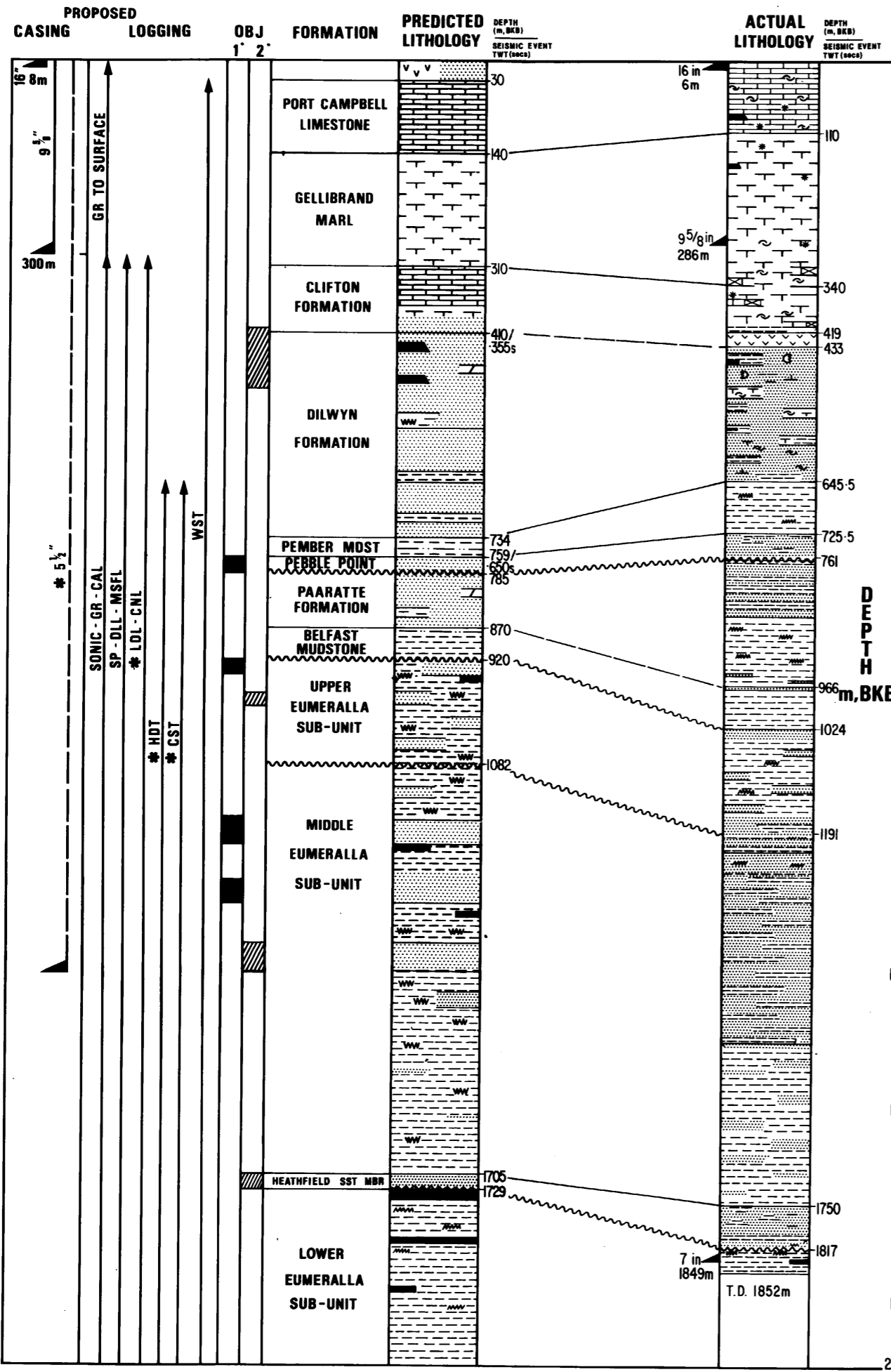


WINDERMERE No.1



LOCATION DETAILS
 LATITUDE 38° 13' 44.7" S
 LONGITUDE 142° 0' 52.1" E
 EASTINGS 588,792.15m
 NORTHINGS 5,768,267.00m
 V.P. 645 LINE 85A-04
 SPUNDED 1500 HOURS 17 MARCH 1987
 SUSPENDED 1800 HOURS 10 APRIL 1987



* TO BE RUN IN THE EVENT OF HYDROCARBON SHOWS

DAYS FROM SPUD

FIGURE 2