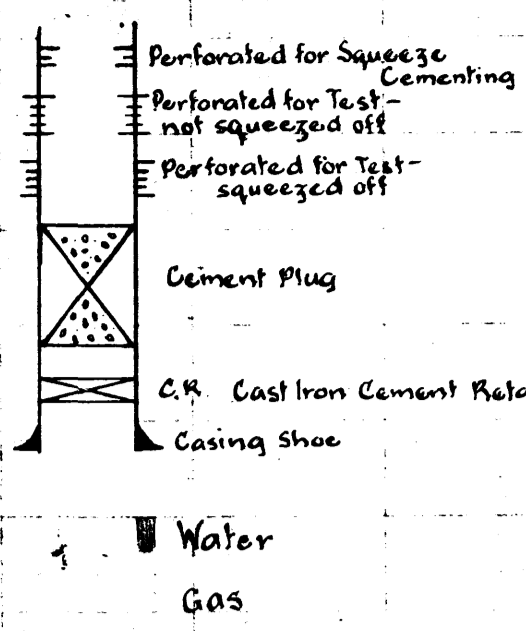


PORT CAMPBELL NO. 1

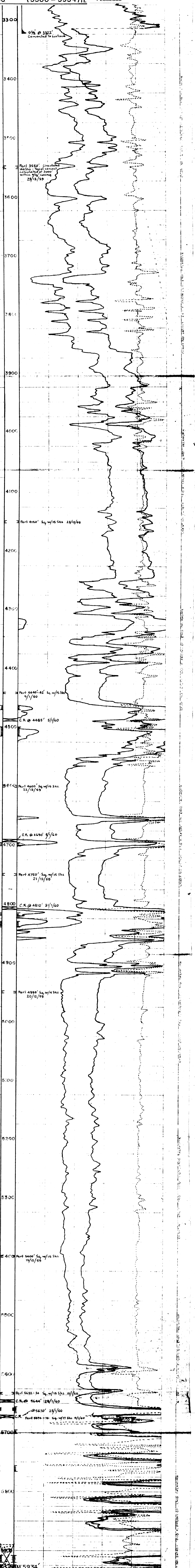
Showing Perforations, Test Intervals and Results, Squeeze Cementations, Cement Retainers etc..

SCALE 50' = 1"

LEGEND



Water
Gas
Gas with some condensate



D.S.T. No 8 4463'-75' 8-9/1/60 Sq.w/20 Sk.

D.S.T. No 7 4498'-4515' 7/1/60 Sq.w/20 Sk.

D.S.T. No 6 4696'-4702' 4-5/1/60 Sq.w/15 Sk.

D.S.T. No 5 4815'-20' 4830'-40' 31/1/60 Sq.w/15 Sk.

D.S.T. No 4 5695'-5701' 1/1/60 Sq.w/20 Sk.

D.S.T. No 3 5756'-66' 30/12/59 Sq.w/25 Sk.

D.S.T. No 2 5908'-20' 5924'-28' 28/12/59 15 Sack Plug

9% @ 3322' Cemented to surface

Perf 3550' Circulated 140 Sk. - Top of cement calculated at 3000' within 9% casing 25/12/59

Perf 4150' Sq.w/15 Sk. 22/12/60

Perf 4440'-42' Sq.w/15 Sk. 9/1/60

C.R. @ 4485' 5/1/60

Perf 4600' Sq.w/15 Sk. 22/12/59

C.R. @ 4690' 9/1/60

Perf 4750' Sq.w/15 Sk. 21/12/59

C.R. @ 4810' 31/1/60

Perf 4950' Sq.w/15 Sk. 20/12/59

Perf 5400' Sq.w/15 Sk. 19/12/59

Perf 5632-34 Sq.w/15 Sk. 16/1/60

C.R. @ 5644' 120/1/60

5670' 29/1/60

Perf 5874-76 Sq.w/17 Sk. 9/1/60

PRODUCTION TEST No 1 (a) 5696'-66' 2-8/1/60 Sq.w/25 Sk. (b) 5657'-63' 19-25/1/60

PORT CAMPBELL No. 1 FROME-BROKEN HILL Pty Ltd ODE No. 44

5% @ 5962' Top of cement behind 5% @ 5875'

D.S.T. No 1 was carried out in open hole covering interval 5652 - 5718 on 28/11/59