

# GEOGRAM\*

(Synthetic Seismogram)

Company: BEACH PETROLEUM N.L.  
WELL: HENKE - 1  
Field: WILDCAT  
Country: AUSTRALIA

Reference No: 570709  
Date Logged: 07/07/87  
Location: 038 00' 20.35" S  
Elevations: KB: 38.7 M DF: 38.4 M GL: 34.1 M

Date Processed: 13/10/87  
Interval: 0.00 to 1432.00  
Date Logged: 07/07/87  
Location: 141 11' 25.81" E  
Permanent Datum: MSL  
Depth Units: METRES

### LOG INFORMATION

FIELD RECORDING: Engineer: J. PATEL Location: VEA Program Version: 28.4  
COMPUTATION: Analyst: M. SANDERS Centre: SVJ Baseline: 14.934  
Logging Datum: 38.7 M  
Seismic Reference Datum: MSL  
Ground Level: 34.1 M

Sonic Calibration By Check Shots: YES  
Sonic Edited By Analyst: YES  
Two-Way Time Sample Interval: 2 ms  
Environment: onshore

True Vertical Depth Corrections Applied  
Source of True Vertical Depth Data:  
Maximum Hole Deviation:

Run	Date	Tool Type	Bit Size/Depth	Casing Size/Depth	Top Depth	Bottom Depth
1	07/07/87	BHC	8 1/2" @ 1432 M	9 5/8" @ 297 F	297 M	1435 M

### GEOGRAM MODEL ASSUMPTIONS

Equal time slice model of horizontal plane layers.  
Plane acoustic waves at normal incidence.  
No intrinsic attenuation.

**POLARITY**  
An upgoing wave, reflected by an increase in acoustic impedance with depth, is displayed as a white trough under normal polarity.

**SIGNATURES**  
All signatures displayed in the Geogram result correspond to a wavelet convolved with a reflection coefficient of -0.5 (A decrease in acoustic impedance with depth).

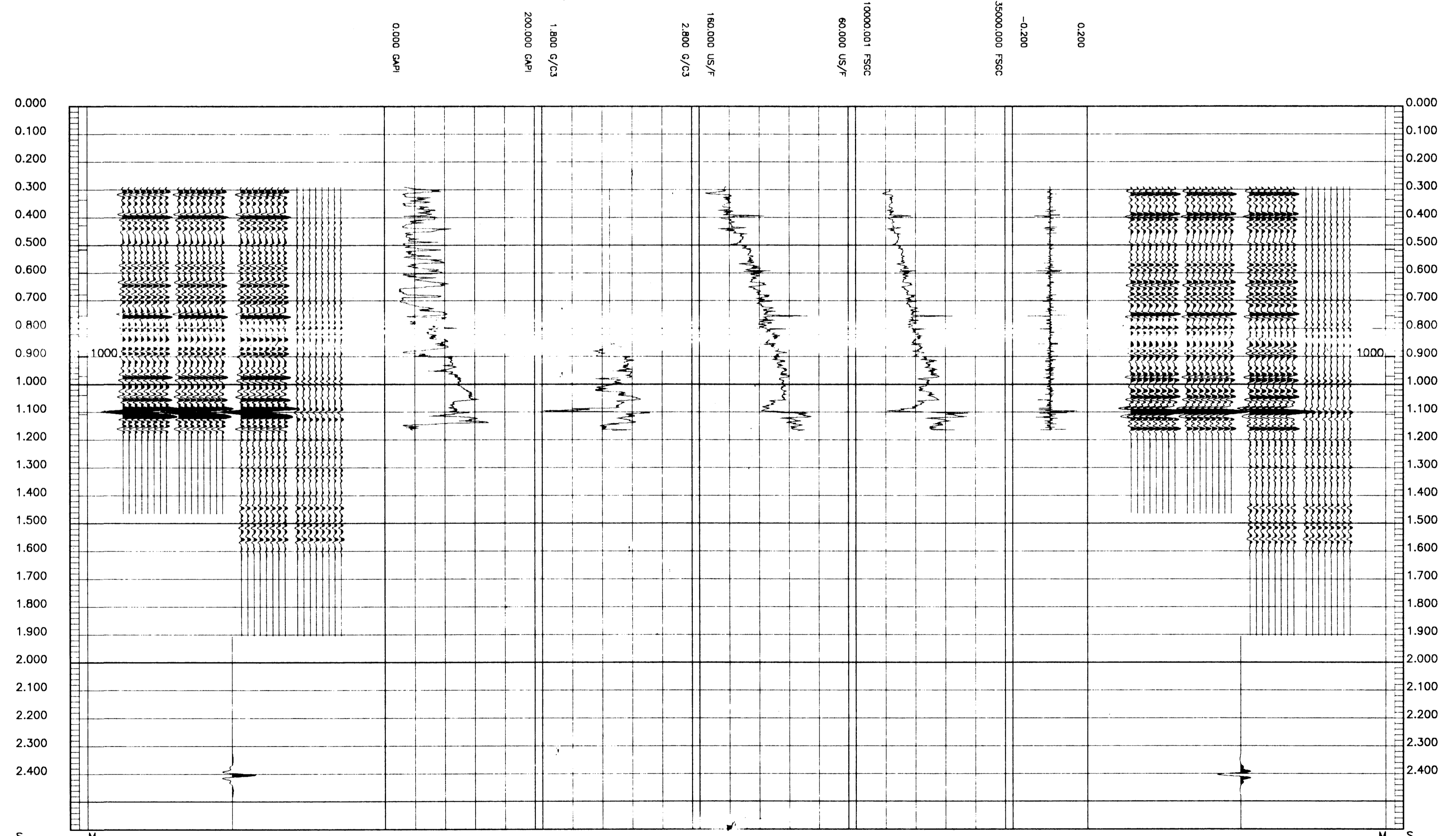
REMARKS

The well name, location and borehole reference data were furnished by the customer.

All interpretations are opinions based on inferences from electrical or other measurements and we cannot, and do not guarantee the accuracy or correctness of any interpretations, and we shall not, except in the case of gross or willful negligence on our part, be liable or responsible for any loss, costs, damage or expense incurred or sustained by anyone resulting from any interpretations made by any of our officers, agents or employees. These interpretations are also subject to Clause 4 of our General Terms and Conditions as set out in our current Price Schedule.

\*\* GEOGRAM \*\*  
12-60 HERTZ ZERO PHASE  
BUTTERWORTH WAVELET  
HENKE - 1  
TRACES ARE NORMALISED IN A WINDOW FROM  
0.3 TO 1.05 SECONDS

MULTIPLES ONLY REVERSE POLARITY
PRIMARIES AND MULTIPLES REVERSE POLARITY
PRIMARIES WITH TRANSMISSION LOSS REVERSE POLARITY
PRIMARIES REVERSE POLARITY
REFLECTION
ACOUSTIC IMPEDANCE
SONIC
DENSITY
GAMMA RAY
MULTIPLES ONLY NORMAL POLARITY
PRIMARIES AND MULTIPLES NORMAL POLARITY
PRIMARIES WITH TRANSMISSION LOSS NORMAL POLARITY
PRIMARIES NORMAL POLARITY



COMPANY BEACH PETROLEUM N.L.  
FIELD WILDCAT  
WELL HENKE - 1  
COUNTRY AUSTRALIA

