

COMPANY: BEACH PETROLEUM N.L.
 WELL: HENKE # 1
 FIELD: WILDCAT
 RIG: O.D.E. # 19
 STATE: VICTORIA
 NATION: AUSTRALIA
 LOCATION: OTWAY BASIN

LATITUDE: 38° 0' 20.3549"
 LONGITUDE: 141° 11' 25.81"

PERMANENT DATUM: MSL
 ELEV. OF PERM. DATUM: KB: 38.7 M
 LOG MEASURED FROM: KB DF: 38.4 M
 38.7 M ABOVE PERM. DATUM GL: 34.1 M
 DRLG. MEASURED FROM: KB

DATE: 6 JUL 87
 RUN NO: 1

OTHER SERVICES-
 LDL-CNL-GR
 BHC-GR
 WST
 CST

PROGRAM
 TAPE NO: 28.4
 SERVICE
 ORDER NO:

DEPTH-DRILLER: 1435.0 M
 DEPTH-LOGGER: 1433.5 M
 BTM. LOG INTERVAL: 1429.0 M
 TOP LOG INTERVAL: 297.0 M

CASING-DRILLER: 16.5 M 297.5 M
 CASING-LOGGER: 16 297.0 M
 HEIGHT: 55.0000 LB/F 36.0000 LB/F
 BIT SIZE: 17 1/2 12 1/4 8 1/2
 DEPTH: 16.5 M 301.0 M 1435.0 M

TYPE FLUID IN HOLE: FRESH WATER GEL / CMC
 DENSITY: 9.20 LB/G
 VISCOSITY: 39.0 S
 PH: 9.5
 FLUID LOSS: 7.5 C3
 SOURCE OF SAMPLE: FLOWLINE
 RM: 2.080 DHMM AT 61.7 DEGF
 RMF: 1.430 DHMM AT 55.4 DEGF
 RMC: 2.100 DHMM AT 55.4 DEGF
 SOURCE RMF/RMC: PRESS /PRESS
 RM AT BHT: 1.043 DHMM AT 130. DEGF
 RMF AT BHT: .651 DHMM AT 130. DEGF
 RMC AT BHT: .956 DHMM AT 130. DEGF

TIME CIRC. STOPPED: 16:00 (06)
 TIME LOGGER ON BTH.: 21:05 (06)

MAX. REC. TEMP: 130.0 DEGF

LOGGING UNIT NO: 822
 LOGGING UNIT LOC: VEA
 RECORDED BY: J. PATEL
 WITNESSED BY: B. RAYNER

REMARKS:
 DLT TOOL RUN CENTRALISED WITH THREE RUBBER STANDOFFS.
 MSFL LOG DISCONTINUED AFTER 970 M AT CLIENT REQUEST.
 BHT THERMOMETERS (TWO) DESCENDED TO 1417.5 M.

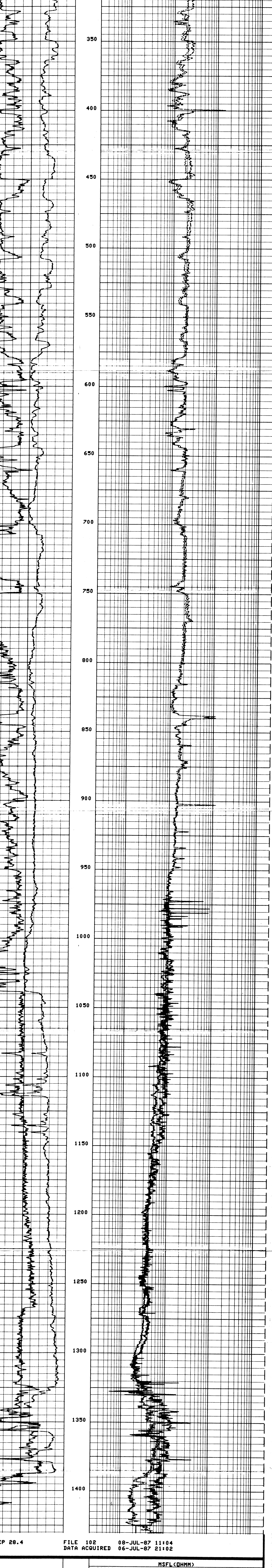
EQUIPMENT NUMBERS-
 DLS E 765 DLC BB 1971 DLE DB 1758 DRS C 788
 SRE CB 1958 SRA A 768 SGC JC 3395 DLN B 1830
 MRM AB 3829 NSM A 2866 GSR U

ALL INTERPRETATIONS ARE OPINIONS BASED ON INFERENCES FROM ELECTRICAL OR OTHER MEASUREMENTS AND WE CANNOT, AND DO NOT GUARANTEE THE ACCURACY OR CORRECTNESS OF ANY INTERPRETATIONS, AND WE SHALL NOT, EXCEPT IN THE CASE OF GROSS OR WILLFUL NEGLIGENCE ON OUR PART, BE LIABLE OR RESPONSIBLE FOR ANY LOSS, COSTS, DAMAGES OR EXPENSES INCURRED OR SUSTAINED BY ANYONE RESULTING FROM ANY INTERPRETATION MADE BY ANY OF OUR OFFICERS, AGENTS OR EMPLOYEES. THESE INTERPRETATIONS ARE ALSO SUBJECT TO OUR GENERAL TERMS AND CONDITIONS AS SET OUT IN OUR CURRENT PRICE SCHEDULE.

CP 28.4 FILE 102 08-JUL-87 11:12
 DATA ACQUIRED 06-JUL-87 23:01

GR (GAPI)	200.00	LLS (DHMM)	2000.0
SP (MV)	20.000	LLD (DHMM)	2000.0
-80.00	20.000		

CP 28.4 FILE 102 08-JUL-87 11:11
 DATA ACQUIRED 06-JUL-87 23:01



CP 28.4 FILE 102 08-JUL-87 11:04
 DATA ACQUIRED 06-JUL-87 21:02

GR (GAPI)	200.00	MSFL (DHMM)	2000.0
SP (MV)	20.000	LLS (DHMM)	2000.0
-80.00	20.000	LLD (DHMM)	2000.0

SENSOR MEASURE POINT TO TOOL ZERO

CALI .89 METER	GR 15.72 METER
S10 9.68 METER	SI90 9.68 METER
SV0 9.68 METER	SV90 9.68 METER
D10 9.68 METER	DI90 9.68 METER
DV0 9.68 METER	DV90 9.68 METER
SPAR 3.23 METER	SP 3.23 METER
LLD 9.68 METER	TENS 4.55 METER
I1 .86 METER	LLS 9.68 METER
CMSF .79 METER	

PARAMETERS

NAME	VALUE	UNIT	NAME	VALUE	UNIT
SPT	STAN		WMUD	9.20000	LB/G
BS	8.50000	IN	BHS	OPEN	
PP	NDRH		DO	0.0	M

TAPE NOT MADE