

06 APR 1988
Schlumberger
SYDNEY LOG
INTERPRETATION
CENTRE

SEISMIC CALIBRATION LOG

(Adjusted Continuous Velocity Log)



Company: BEACH PETROLEUM N.L.

Well: FAHLEY - 2

Field: WILDCAT

Country: AUSTRALIA

Reference No: 569001 Interval: 0.00 to 1300.00

Date Logged: 20/08/87 Date Processed: 26/08/87

Location: 037 58' 44.86" S 141 02' 47.01" E

Elevations: KB: 31.4 M DF: 31.1 M GL: 26.8 M

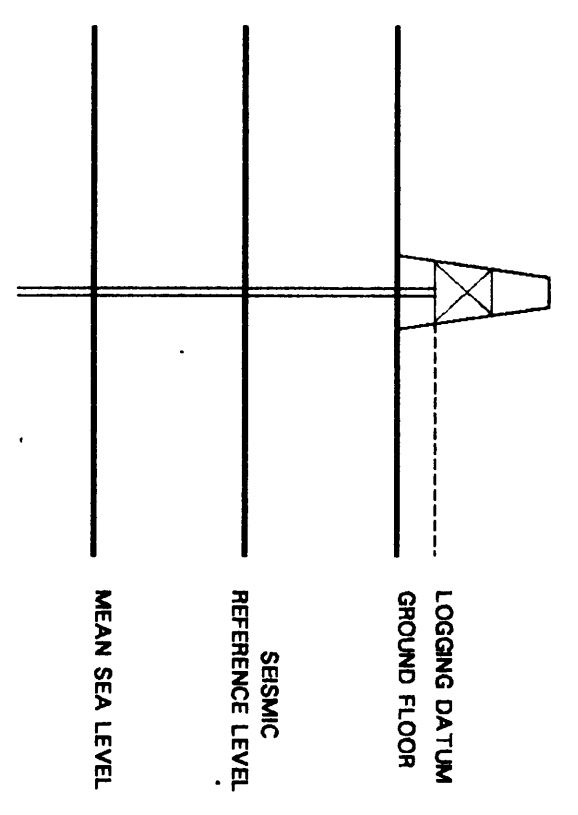
Permanent Datum: MSL Depth Units: METRES

FIELD RECORDING: Engineer: A. RICHMOND Location: VEA Program Version: 28.4

COMPUTATION: Analyst: M. SANDERS Centre: SYD Barfield: 14.934

Logging Datum: 31.4 M
ELEVATION ABOVE MEAN SEA LEVEL

Seismic Reference Datum: MSL
Ground Level: 26.8 M



Total Number of Levels: 21 (31.4 to 1300 metres below KB)

Depth Reference: SRD

Time Reference: SRD

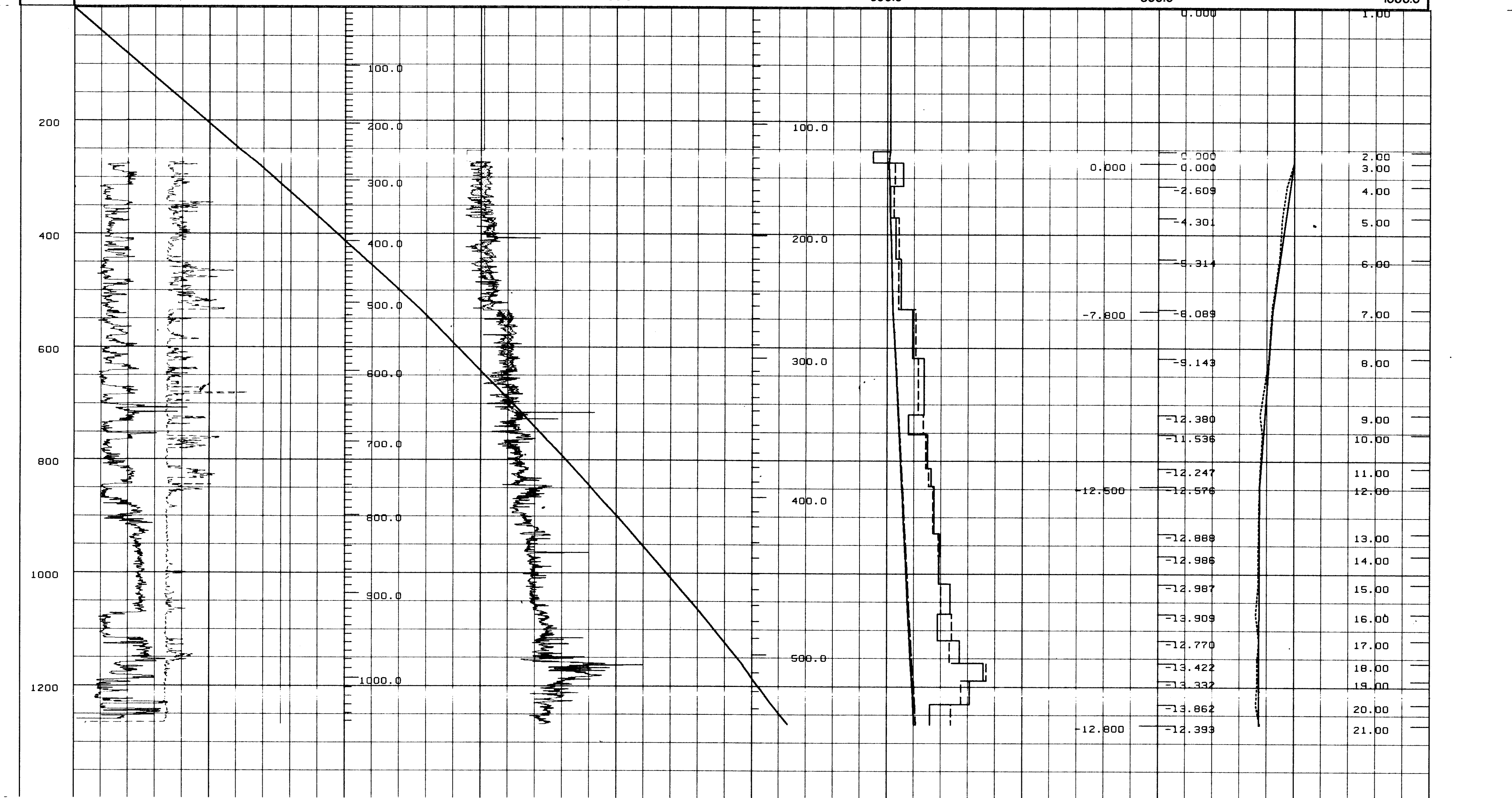
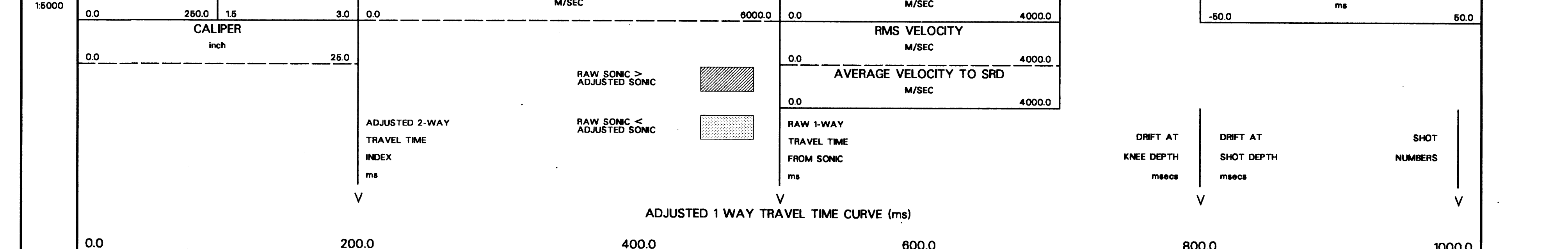
Run	Date	Tool Type	Bit Size/Depth	Casing Size/Depth	Top Depth	Bottom Depth
1	20-08-87	BHC	8 1/2" @ 1300 M	9 8/8" @ 301 M	306 M	1300 M

REMARKS

FOLD HERE

The well name, location and borehole reference data were furnished by the customer.

All interpretations are opinions based on inferences from electrical or other measurements and we cannot, and do not guarantee the accuracy or correctness of any interpretations, and we shall not, except in the case of gross or willful negligence on our part, be liable or responsible for any loss, costs, damages or expenses incurred or sustained by anyone resulting from any interpretations made by any of our officers, agents or employees. These interpretations are also subject to Clause 4 of our General Terms and Conditions as set out in our current Price Schedule.



JL

COMPANY BEACH PETROLEUM N.L.
FIELD WILDCAT
WELL FAHLEY - 2
COUNTRY AUSTRALIA