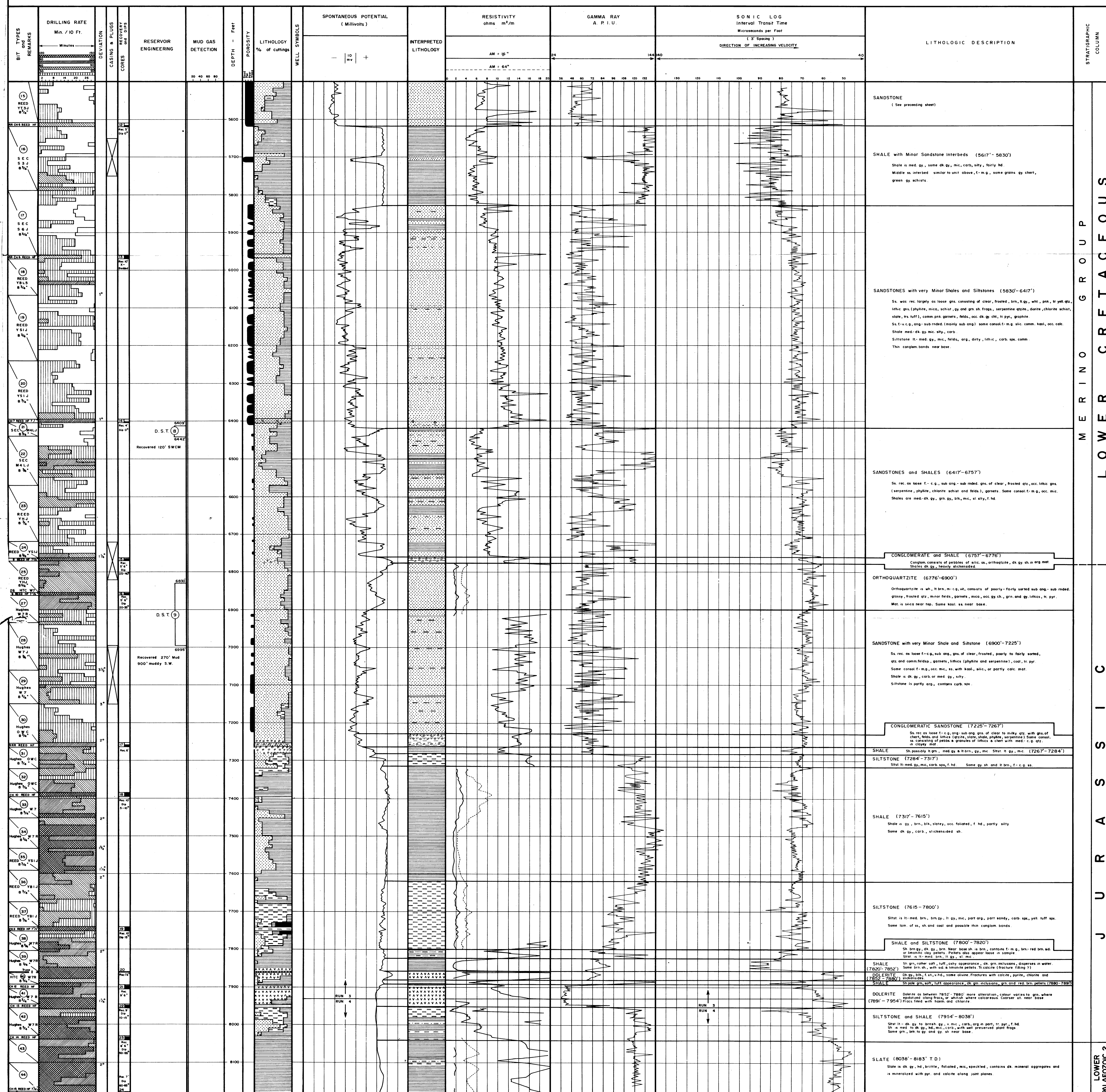


COMPOSITE WELL LOG  
PLANET CASTERTON No. 1 WELL

SHEET 3 of 3  
5500' - 8183'



LITHOLOGIC DESCRIPTION

SANDSTONE (See preceding sheet)

SHALE with Minor Sandstone Interbeds (5617' - 5830')

SHALE is med. gy., some dk gy., mic., carb., silty, fairly hd. Middle is interbed similar to unit above, f-m.g., some grains of chert, green gy. schists.

SANDSTONES with very Minor Shales and Siltstones (5830' - 6417')

Ss. rec. largely as loose gns. consisting of clear, frosted, brn., f. gy., wht., blk., fr. yell. dtz., lithic gns. (phyllite, mica, schist, qz. and grn. sh. frags., serpentine quartzite, dolomite, chlorite schist, slate, fr. tuff), comm. blk. garnets, felds., occ. dk. gy. chert, fr. pyr., graphite.

Ss. f.-c.g., ang. sub-nded. (mainly sub ang.) some congl. f-m.g. silt. comm. kaol., occ. calc. Shale med-dk. gy. mic. silty, carb.

Siltstone lt. med. gy., mic., felds., arg., dirty, lithic, carb. spx. comm.

Thin congl. bands near base.

SANDSTONES and SHALES (6417' - 6757')

Ss. rec. as loose f.-c.g., sub ang. sub-nded. gns. of clear, frosted dtz., occ. lithic gns. (serpentine, phyllite, mica, schist, quartzite and felds.), garnets. Some congl. f-m.g., occ. mic. Shales are med-dk. gy., grn. gy., blk., mic., silty, f. hd.

CONGLOMERATE and SHALE (6757' - 6776')

Conglom. consists of pebbles of silic. ss., orthoquartzite, dk. gy. sh. in arg. mat. Shales dk. gy., heavily slickensided.

ORTHOQUARTZITE (6776' - 6900')

Orthoquartzite is wh., fr. brn., m.-g., wt. consists of poorly to fairly sorted sub ang. sub-nded. glossy, frosted qtz., minor felds., garnets, mica, occ. gy. ch., grn. and gy. lithics, fr. pyr. Mat. is silica near top. Some kaol. ss. near base.

SANDSTONE with very Minor Shale and Siltstone (6900' - 7225')

Ss. rec. as loose f.-c.g., sub ang. gns. of clear, frosted, poorly to fairly sorted, dtz. and comm. felds., garnets, lithics (phyllite and serpentine), coal, fr. pyr. Some congl. f-m.g., occ. mic. ss. with kaol., silic., or partly calc. mat. Shale is dk. gy., carb. or med. gy., silty. Siltstone is partly arg., contains carb. sps.

CONGLOMERATIC SANDSTONE (7225' - 7267')

Ss. rec. as loose f.-c.g., sub ang. gns. of clear to milky dtz. with gns. of chert, felds. and lithics (quartzite, slate, phyllite, serpentine). Some congl. ss. consisting of pebbles a granules of lithics a chert with med. c.g. qtz. in clayey mat.

SHALE (7267' - 7284')

Sh. possibly lt. gm., med. gy. & lt. brn., gy. mic. Silt. lt. gy., mic. (7267' - 7284')

SILTSTONE (7284' - 7317')

Silt. lt. med. gy., mic., carb. sps., f. hd. Some gy. sh. and lt. brn., f.-c.g. ss.

SHALE (7317' - 7615')

Shale is gy., brn., blk., storey, occ. foliated, f. hd., partly silty. Some dk. gy., carb., slickensided sh.

SILTSTONE (7615' - 7800')

Silt. lt. med. brn., brn. gy., lt. gy., mic., part arg., part sandy, carb. spx., yell. tuff sps. Some lam. of ss., sh. and coal and possible thin congl. bands.

SHALE and SILTSTONE (7800' - 7820')

Sh. brn. gy., dk. gy., brn. Near base sh. is brn., contains f-m.g., brn.-red brn. sd. or laminar clay pebbles. Pebbles also appear here in sample. Silt. is lt. med. brn., lt. gy., sil. mic.

SHALE (7820' - 7852')

Sh. gm., rather soft, tuff, shaly appearance, dk. gm. inclusions, disperses in water. Some brn. sh. with sil. & ironite pebbles in calcite fracture filling.

DOLERITE (7852' - 7880')

Dk. gy., blk., f. t., v. hd., some shaly. Fractures with calcite, pyrite, chlorite and slickensides.

SHALE (7880' - 7899')

Sh. soft, tuff appearance, dk. gm. inclusions, gm. and red brn. pebbles (7880' - 7899')

DOLERITE (7899' - 7954')

Dolerite dy. between 7852' - 7880' more alteration, colour varies to grn., where gradates along fracs. of which where calcite veins. Coarser at near base (7899' - 7954') Fracs. filled with horn. and chlorite.

SILTSTONE and SHALE (7954' - 8038')

Silt. lt. dk. gy. to brn. gy., v. mic., carb., arg. in part, fr. pyr., f. hd. Ss. is med. to dk. gy., med. mica, carb., with well preserved plant frags. Some gm., blk. to gy. and gy. sh. near base.

SLATE (8038' - 8183' T.O.)

Slate is dk. gy., hd., brittle, foliated, mic., speckled, contains dk. mineral aggregates and is mineralized with pyr. and calcite along joint planes.

STRATIGRAPHIC COLUMN

MERINO GROUP

LOWER CRETACEOUS

JURASSIC

LOWER PALAEZOIC?