

COMPOSITE WELL LOG

BEACH PETROLEUM N.L.

W.C.R.

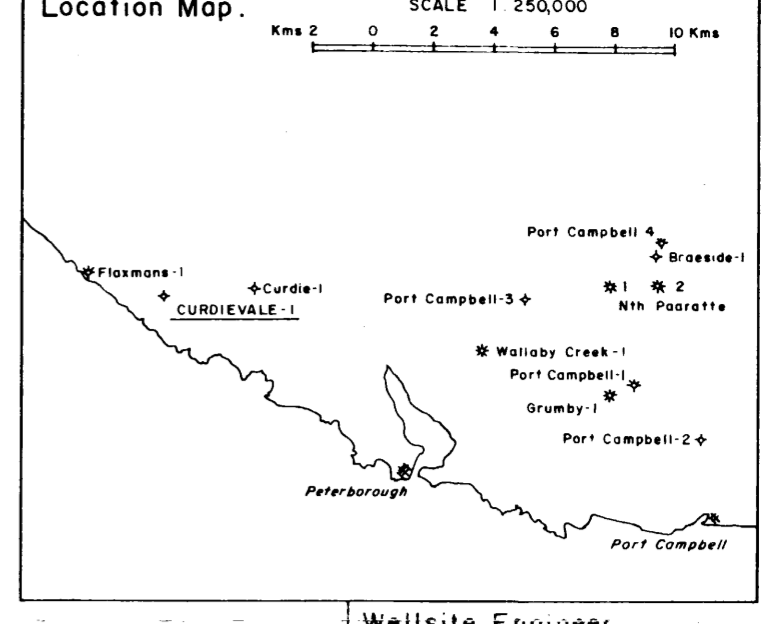
PETROLEUM TENEMENT: PEP.104
STATE: VICTORIA

WELL NAME & NUMBER: CURDIEVALE No.1
WELL STATUS: Plugged and Abandoned

WIRELINE LOG DATA

Date:	26 / 3 / 83											
Run No.	One											
Rm at Meas. Temp.	2.37	at	22	°C	at	°C	at	°C	at	°C	at	°C
Rmf at Meas. Temp.	2.55	at	16	°C	at	°C	at	°C	at	°C	at	°C
Rmc at Meas. Temp.	2.62	at	15	°C	at	°C	at	°C	at	°C	at	°C
Source Rmf Rmc	Meters	Meters	Meters	Meters	Meters	Meters	Meters	Meters	Meters	Meters	Meters	Meters
Rm at BHT	1.27	at	58	°C	at	°C	at	°C	at	°C	at	°C
Time Since Circ.	5.5 - 19 Hours											
Max. Rec. Temp.	62° C											
LOG	INTERVAL											
LOGGING SUITE	DLL-SP-CR-CAL (1175-5m T.D. - 291.5m (9%) Casing Shoe)											
	S11C (1175-5m T.D. - 291.5m (9%) Casing Shoe)											
	FDC-CNL-CR-CAL (1175-5m T.D. - 525m)											
Formation Test Results.	DST 1. 936 - 965 (Pebble Point Formation). Recovered 891m of fresh formation water (540ppm salinity). No hydrocarbon indications.											

Consortium:
BEACH PETROLEUM N.L. 50%
FARMINEES - GAS AND FUEL EXPLORATION.



LOCATION: LAT. 38°33'23" S LONG. 142°47'04" E
ELEVATION: REFERENCE PT. (K.B.) 58.4m A.S.L.
GROUND 52.4m A.S.L.

DATE SPUDDED: 0500 HRS 17/3/83
DATE DRILLING STOPPED: 0335 HRS 25/3/83
DATE RIG OFF: 0500 HRS 27/3/83

TOTAL DEPTH WIRELINE LOG: 1175m
TOTAL DEPTH WIRELINE LOG: 1175-5m

HOLE SIZE: 12 1/4" FROM SURFACE TO 297m
8 1/2" FROM 297m TO 1176m

CASING: 18 WT GR DEPTH CMT. TO
20" CONDUCTOR 3.66m — SURFACE
9 5/8" 36 lb/ft J55 292m 480Sk SURFACE

CEMENT PLUGS: FROM TO SACKS
930m 850m 105
520m 440m 123
300m 220m 104

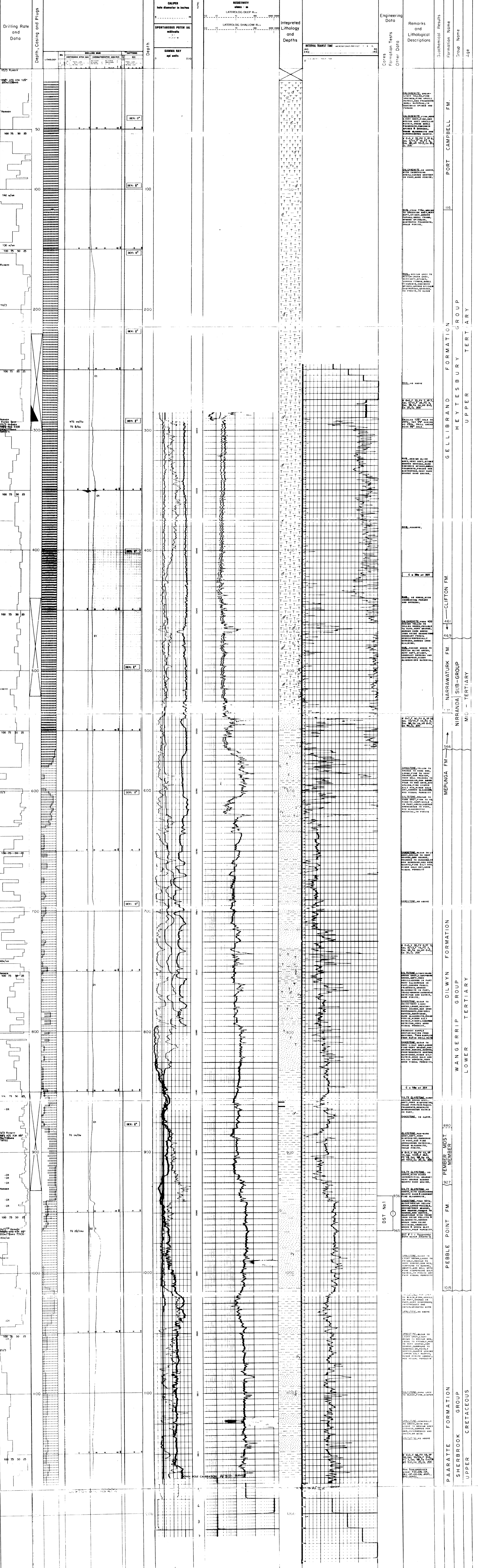
WELL HEAD FITTINGS: Plate welded over 9 5/8" Casing
DRILLED BY: P.D.S.A.
LOGGED BY: Schlumberger CEMENTED BY: Halliburton
DRILLING METHOD: Rotary MUD LOGGING BY: Eslog.

LITHOLOGIC REFERENCE

Sandstone	Siltstone	Calcareous	Fossiliferous	Carbonaceous
Mudstone	Marl	Dolomite	Pyrite	Not seen, No recovery.
Shale	Limestone	Coal	Glauconite	

Wellsite Engineer: G. SCOTT.
Wellsite Geologist: S. GUBA.
Specific Problems: NIL

SCALE 1:1000



INTERVAL

Interval	Depth (m)	Formation
1	0 - 100	CLIFFTON FM.
2	100 - 200	CLIFFTON FM.
3	200 - 300	CLIFFTON FM.
4	300 - 400	CLIFFTON FM.
5	400 - 500	CLIFFTON FM.
6	500 - 600	CLIFFTON FM.
7	600 - 700	CLIFFTON FM.
8	700 - 800	CLIFFTON FM.
9	800 - 900	CLIFFTON FM.
10	900 - 936	PEBBLE POINT FM.
11	936 - 965	PEBBLE POINT FM.
12	965 - 1000	PEBBLE POINT FM.
13	1000 - 1050	PEBBLE POINT FM.
14	1050 - 1100	PEBBLE POINT FM.
15	1100 - 1175	PEBBLE POINT FM.

PEBBLE POINT FM. 936-965
DST No. 1

Engineering Data

Depth (m)	Formation	Group	Age
0 - 936	CLIFFTON FM.	UPPER TERTIARY	
936 - 965	PEBBLE POINT FM.	UPPER TERTIARY	
965 - 1000	PEBBLE POINT FM.	UPPER TERTIARY	
1000 - 1050	PEBBLE POINT FM.	UPPER TERTIARY	
1050 - 1100	PEBBLE POINT FM.	UPPER TERTIARY	
1100 - 1175	PEBBLE POINT FM.	UPPER TERTIARY	