

COMPOSITE WELL LOG

COMPANY: ARCO LTD. / WOODSIDE (LAKES ENTRANCE) OIL CO. N.L.

WELL NO: SOUTHWEST BAIRNSDALE NO. 1



W474

PETROLEUM TENEMENT: P.P.L.No.185

STATE: VICTORIA

4 - MILE SHEET: BAIRNSDALE

Basin: GIPPSLAND

WELL STATUS: ABANDONED

LOCATION: Lat 37° 52' 6" South, Long 147° 21' 58" East
ELEVATION: Reference Pt. K.B. 236' ASL. Ground 225' ASL.

Date Spudded: January 8, 1963
Date Drilling Stopped: February 14, 1963
Date Rig Released: February 14, 1963
Total Depth: Driller 3926'

Hole Size: In From To
12 1/4 Surface 489'
8 3/4 489' 3926'

Casing: In Wt. Gr. Depth Cement Cmt'd to
13 1/4 48 lb H-40 30' 20 sx Surface
9 3/4 36 lb J-55 477'

Cement Plugs: From To Sacks
0 10 5
410 510 50
1160 1260 50

Well Head Fittings: Welded steel plate
Drilled By: Reading and Bates (Aust.) Pty. Ltd.
Logged By: Schlumberger
Mud Logging By: Arco Ltd.
Cemented By: Haliburton
Drilling Method: Rotary
Lithology By: F. Ingram, N. Meyers and D. Rutledge
Drasting By: Geodrifting Services

WELL SYMBOLS

- Core interval number and recovery (in block)
Plugged interval
Casing shoe
Formation test interval and no

ELECTRIC LOG DATA

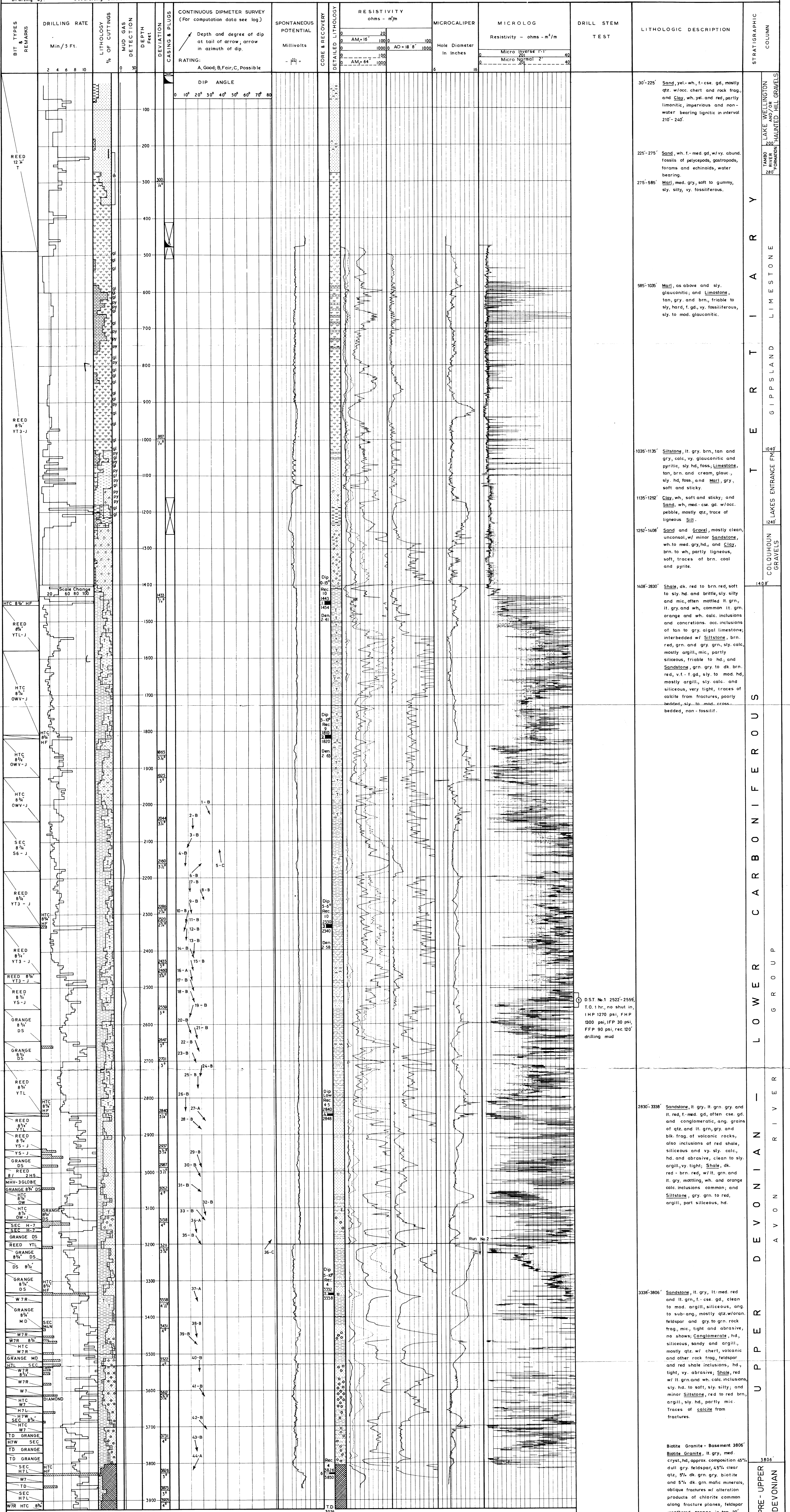
Table with columns: Run No, Date, First Reading, Last Reading, Interval Measured, Casing Schlumberger, Casing Driller, Depth Reached, Bottom Driller, Mud Nature, Density / Viscosity, Mud Resistivity, Mud Resist BHT, pH / Fluid Loss, Origin of Sample, Rmf, Rmc, Bit Size, Casing Size, Opr. Rig Time, Truck No., Recorded by, Witness.

MICROLOG CALIPER DATA

OTHER WELL LOGS
Sonic Log 475 - 3856
Dipmeter 2000 - 3853

LITHOLOGIC REFERENCE

- Sandstone, Siltstone, Claystone, Marl, Limestone, Shale, Gravel, Conglomerate, Coal, Biotite Granite, Gneiss, Pyritic



STRATIGRAPHIC COLUMN
LAKE WELLINGTON AND/OR HAUNTED HILL GRAVELS
TAMBOURAHOWER FORMATION
LIMESTONE
GIPPSLAND
LAKES ENTRANCE FIN
COLUHOON GRAVELS
LOWER CARBONIFEROUS GROUP
DEVONIAN - RIVER
UPPER DEVONIAN - AVON
PRE-UPPER DEVONIAN