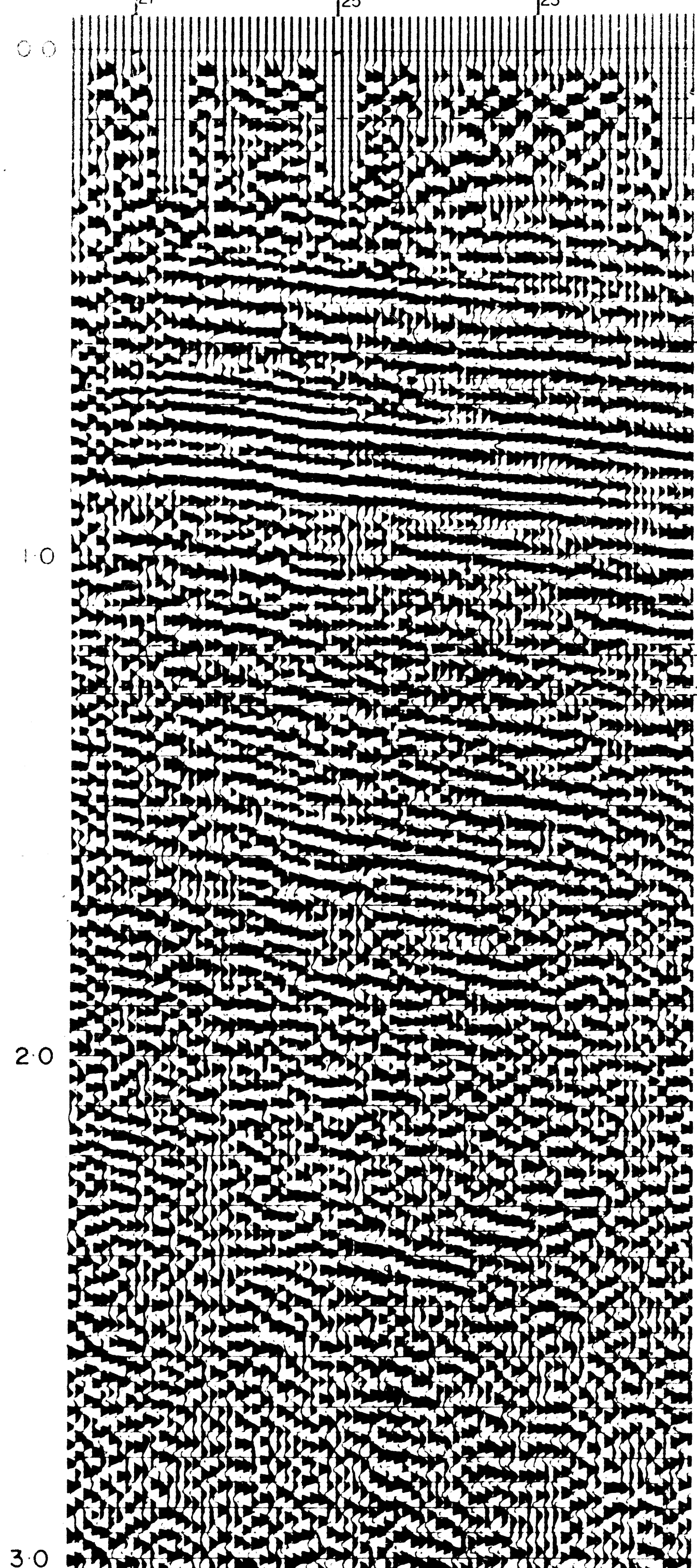


Shotpoint 27 is 297 feet Northwest of SALT LAKE N°1



0.139 — Top of GIPPSLAND LIMESTONE — 384'

0.54 — Top of LAKES ENTRANCE Formation — 2139'

0.67 — Top of LATROBE VALLEY Formation — 2474'

1.16 — Top of BASALT — 4634'

1.20 — Top of CHILDERS Formation - Upper Unit — 4769'

1.26 — Top of CHILDERS Formation - Lower Unit — 5089'

1.27 — Top of STRZELECKI GROUP — 5144'

NOTE - Vertical two way well times were tied to the section - This is based on the assumption that the section reduction velocity is similar to that used for well computations Vd = 5900/sec. No initiation lags were applied.

