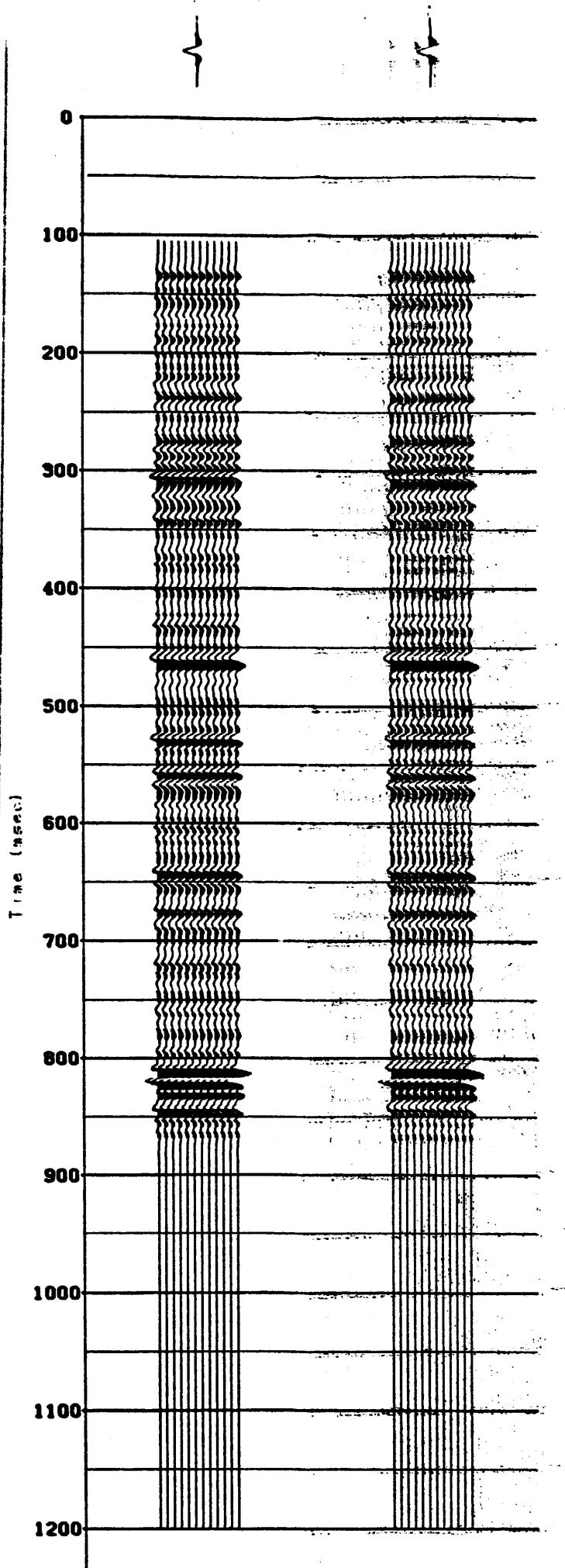
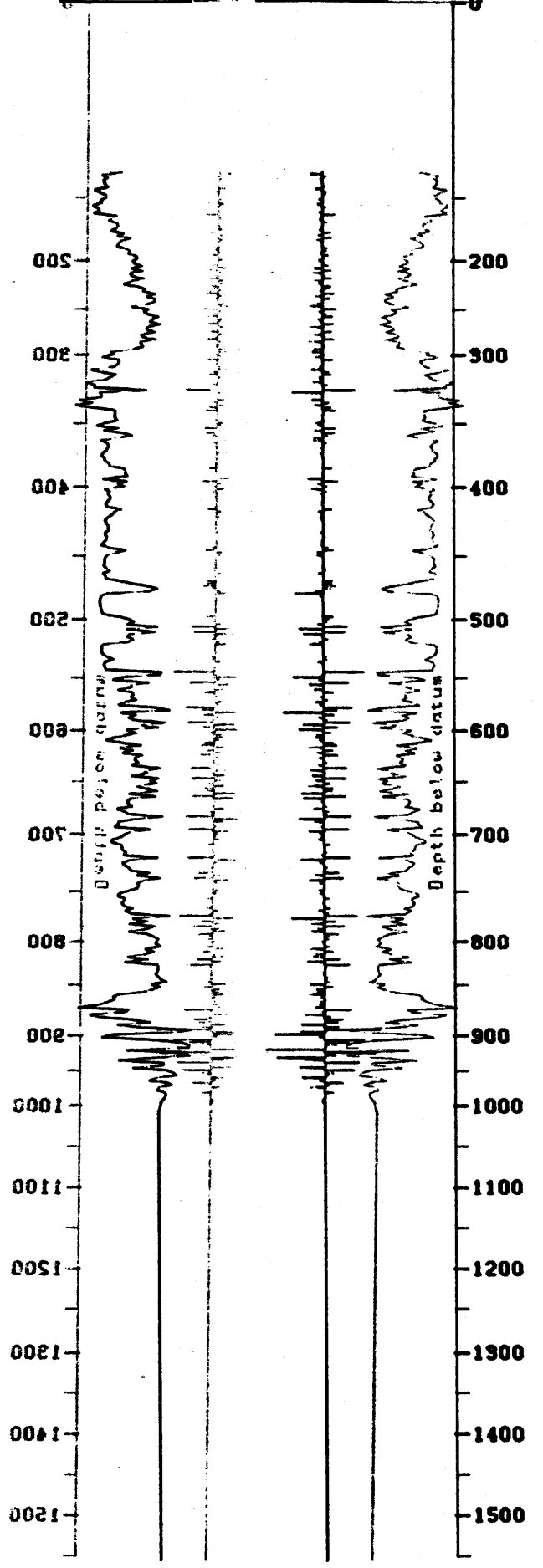



Sonic 38500 Ref: 00244 02V  
 750 0.0150 -0.5 02.0.5 02V



**SYNTHETIC SEISMOGRAM**

DEPT. NAT. RES & ENV.  
  
 PE600860

**STRINGYBARK #1**

COMPANY - CRUSADER RESOURCES N.L.  
 AREA - GIPPSLAND BASIN

- Primaries only
- Primaries only

Reflection coeffs. calculated from SONIC data only.

