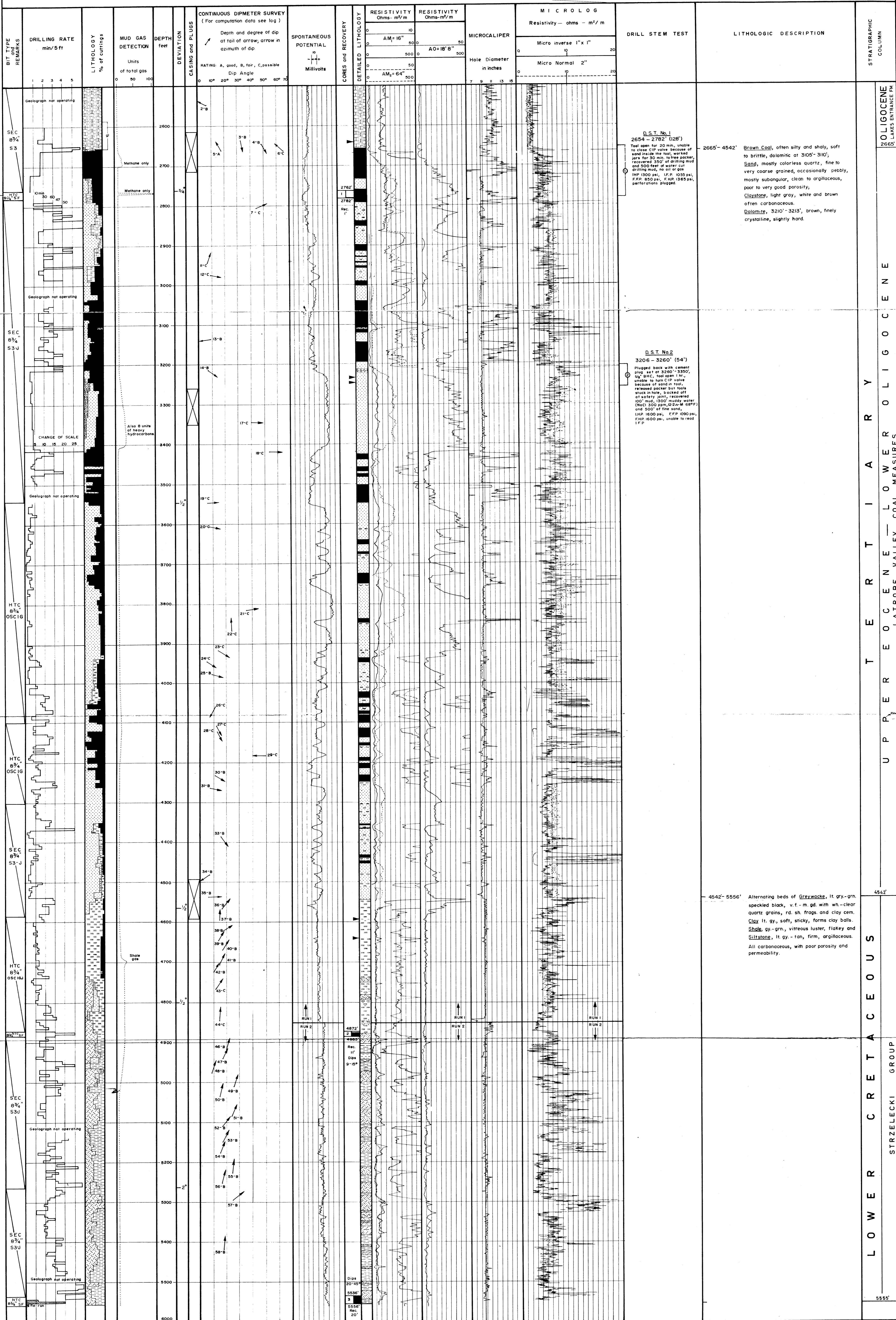


COMPOSITE WELL LOG  
SEASPRAY No.1

2500-5555'  
Sheet 2 of 2



D.S.T. No. 1  
2654 - 2782' (128')

Tool open for 20 min, unable to close CIP valve because of sand made the tool, worked jars for 30 min. to free packer, recovered 350' of drilling mud and 500 feet of water cut drilling mud; no oil or gas. IHP 1300 psi, I.F.P. 1035 psi, F.F.P. 850 psi, F.H.P. 1365 psi, perforations plugged.

D.S.T. No. 2  
3206 - 3260' (54')

Plugged back with cement plug set at 3260'-3350', 5/8" B.H.C. tool open 1 hr., unable to run CIP valve because of sand in tool, released packer but tools stuck in hole, backed off at safety joint, recovered 100' mud, 1000' muddy water (NaCl 300 ppm, 122mM 68°F) and 500' of fine sand, IHP 1600 psi, F.F.P. 1090 psi, F.H.P. 1600 psi, unable to read I.F.P.

2665'-4542' Brown Coal, often silty and shaly, soft to brittle, dolomitic at 3105'-3110', Sand, mostly colorless quartz, fine to very coarse grained, occasionally pebbly, mostly subangular, clean to argillaceous, poor to very good porosity, Claystone, light gray, white and brown often carbonaceous. Dolomite, 3210'-3213', brown, finely crystalline, slightly hard.

4542'-5556' Alternating beds of Greywacke, lt. gy.-grn. speckled black, v.f.-m. gd. with wh.-clear quartz grains, rd. sh. frags. and clay cem. Clay lt. gy., soft, sticky, forms clay balls. Shale, gy.-grn., vitreous luster, flakey and Siltstone, lt. gy.-tan, firm, argillaceous. All carbonaceous, with poor porosity and permeability.

STRATIGRAPHIC COLUMN  
OLIGOCENE  
LATES ENTRANCE FM  
2665'  
O L I G O C E N E  
L A T R O B E V A L L E Y C O A L M E A S U R E S  
U P P E R E O C E N E  
L O W E R O L I G O C E N E  
C R E T A C E O U S  
S T R Z E L E C K I G R O U P  
5555'