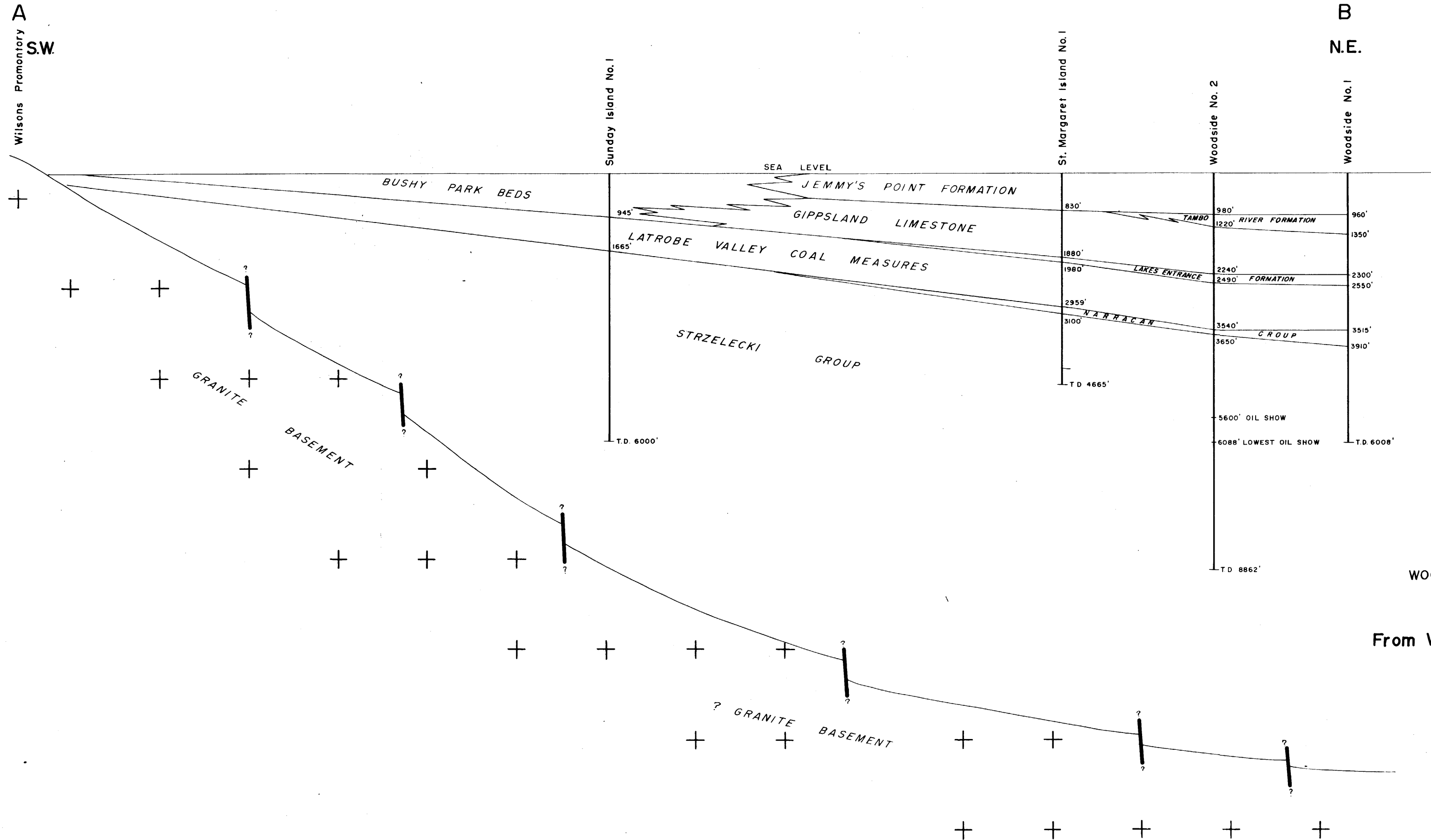


GEOLOGICAL SECTION AFTER DRILLING ST. MARGARET ISLAND No. 1 WELL



WOODSIDE (LAKES ENTRANCE) OIL CO. N.L.
GEOLOGICAL SECTION
 From Wilson's Promontory to Woodside No. 1

Scales Vertical 1 inch = 2000 feet
 Horizontal 1 inch = 2 miles

SEE LOCALITY MAP FOR LINE OF SECTION



Encl 3