

# COMPOSITE WELL LOG

## WOODSIDE (LAKES ENTRANCE) OIL CO. N.L.

### GOLDEN BEACH WEST No. 1



PETROLEUM TENEMENT: 44 P.E.P.      STATE: VICTORIA      4-MILE SHEET: WARRAGUL      BASIN: GIPPSLAND      WELL STATUS: DRY and ABANDONED

LOCATION      Lat. 38° 14' 55" S  
                  Long 147° 21' 23" E

ELEVATION      G.L. 28' A.S.L.  
                  K.B. 39' A.S.L.

Date Spudded      11 Sept, 1965  
Date Drilling stopped      29 Oct, 1965  
Date Rig Released      7 Nov, 1965

Driller      7515'  
E-Log      7514'

Hole Size	Inches	From	To
	23	Surface	90'
	12 1/4	90'	412'
	8 3/4	412'	3254'
	12 1/4	3254'	3254'
	8 3/4	3254'	7515'

Casing	Inches	Wt.	Gr.	Depth	Cm.	Cm/d
	23	—	—	90'	170 sds	Surface
	13 1/2	48 lb	H-40	252'	—	—
	9 5/8	36 lb	J-55	3155'	670 "	—

Cement Plug	From	To	Sacks
	0'	30'	—
	2118'	2336'	68
	2660'	2860'	68
	3006'	3205'	95
	5300'	5300'	69
	5723'	5923'	81

Perforations	Type	Size	From	To	No./ft.
Run 1			2851'	2856'	5
Run 2			2297'	2301'	4
Run 3			2301'	2306'	4

RUN NUMBER	ELECTRIC LOG DATA					MICROLOG-CALIPER DATA				
	19 Sept, 1965	12 Oct, 1965	30 Oct, 1965	19 Sept, 1965	30 Oct, 1965	1	2	3	4	5
Date	19 Sept, 1965	12 Oct, 1965	30 Oct, 1965	19 Sept, 1965	30 Oct, 1965					
First Reading	3252'	3027'	7514'	3252'	7513'					
Last Reading	257'	3154'	5400'	257'	3154'					
Interval Measured	2995'	2373'	2114'	2995'	4333'					
Casing Schumberger	257'	3154'	3054'	257'	3154'					
Casing Driller	257'	3087'	3057'	257'	3150'					
Depth Reached	3257'	3027'	7515'	3253'	7514'					
Bottom Driller	3257'	3024'	7115'	3251'	7513'					
Mud Name	Ligno Sulphon	Ligno Sulphon	Ligno Sulphon	Ligno Sulphon	Ligno Sulphon					
Density / Viscosity	10.3 / 58	9.4 / 48	10.3 / 60	10.3 / 53	10.3 / 60					
Mud Resistivity	1.99 @ 80°F	1.44 @ 60°F	1.83 @ 70°F	1.96 @ 60°F	1.88 @ 70°F					
Mud Resistivity BHT	1.2 @ 102°F	0.79 @ 125°F	0.9 @ 125°F	1.2 @ 102°F	0.9 @ 125°F					
pH / Fluid Loss cc/30 min.	9 / 5.2	11 / 6	8 / 14.6	9 / 5.6	8 / 14.6					
Origin of Sample	Flowline	Flowline	Flowline	Flowline	Flowline					
Rate	0.95 @ 102°F	1.31 @ 80°F	0.96 @ 80°F	0.96 @ 102°F	0.98 @ 80°F					
Rate	1.3 @ 102°F	2.34 @ 80°F	1.56 @ 100°F	1.5 @ 102°F	1.58 @ 100°F					
Bit Size 1	12 1/4 in. 412'	8 3/4 in. T.D.	12 1/4 in. 3251'	12 1/4 in. 412'	12 1/4 in. 3251'					
Bit Size 2	8 3/4 in. T.D.	8 3/4 in. T.D.	8 3/4 in. T.D.	8 3/4 in. T.D.	8 3/4 in. T.D.					
Casing Size	13 1/2	9 5/8	13 1/2	13 1/2	9 5/8					
Op Rig Time	2 hours	2 hours	1 hour	2 hours 30 min.	4 hours					
Track No.	2320	2320	2520	2520	2320					
Recorded by	Prigg	Strecher	Prigg	Prigg	Prigg					
Witnessed by	Perry, Watts	Watts	Watts	Perry, Watts	Watts					

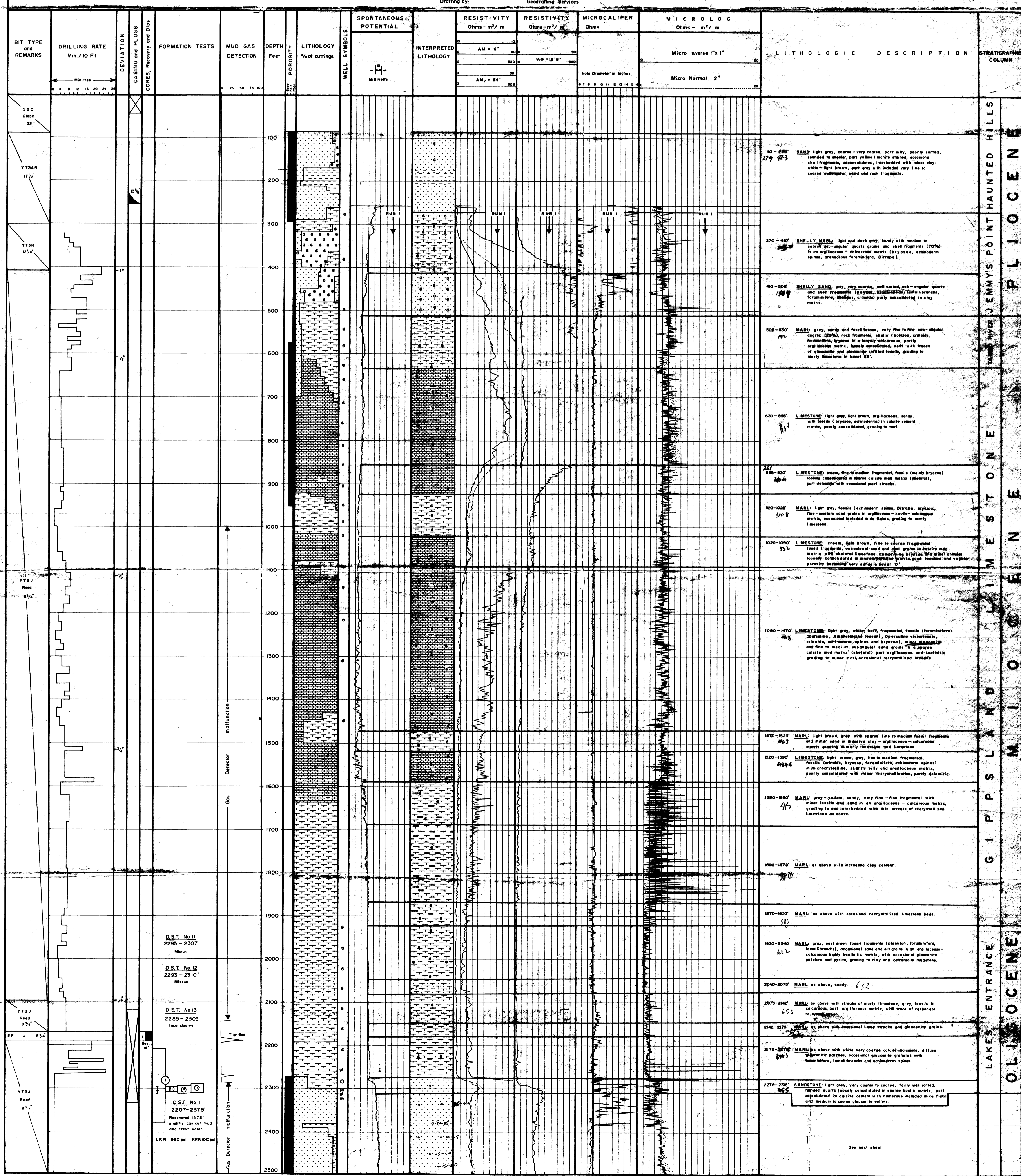
**LITHOLOGIC REFERENCE**

- Conglomerate
- Sand, sandstone
- Siltstone
- Clay, claystone
- Shale, mudstone
- Limestone
- Dolomite
- Coal
- Micaceous
- Calcareous
- Glaucous
- Pyritic
- Carbonaceous

**WELL SYMBOLS**

- Gas show
- Sidewall core
- Core, interval, number and recovery
- Plugged interval
- Perforated interval
- Formation test, interval and number
- Casing shoe
- Macro fossil

Well Head Firing: Steel plug welded on casing  
 Drilled by: Nichol Bowden Drilling Pty. Ltd.  
 Logged by: Schumberger  
 Cemented by: E. J. Service Pty.  
 Mud Logging by: T. R. Watts  
 Lithology by: T. R. Watts  
 Composite Log: T. R. Watts  
 Wellsite Geological Supervision: CUMMILL, MEYERS and ASSOCIATES  
 Drafting by: Geodrafting Services



HAUNTED HILLS  
 JEMMY'S POINT  
 LIMESTONE  
 GIPPSLAND  
 MIocene  
 OLIGOCENE

D.S.T. No. 11  
2295 - 2307  
Mercur

D.S.T. No. 12  
2293 - 2310  
Mercur

D.S.T. No. 13  
2289 - 2309  
Inconclusive

D.S.T. No. 14  
2207 - 2378  
Recovered 1578' slightly gas cap mud and fresh water

1.5% Gas Detector

See next sheet