



SEISMIC CALIBRATION LOG

(Adjusted Continuous Velocity Log)

Company: HARTOGEN ENERGY LIMITED

Well: BURONG - 1 *Seismic Computations*

Field: WILDCAT

Country: AUSTRALIA

Reference No: 540439 Interval: 0.00 to 430.00

Date Logged: 08/11/85 Date Processed: 24/11/85

Location: 038 18 38.84 S 147 11 51.69 E

Elevation: KB 129.0 FT DF: 129.0 FT GL: 115.0 FT

Permanent Datum: MSL Depth Units: FEET

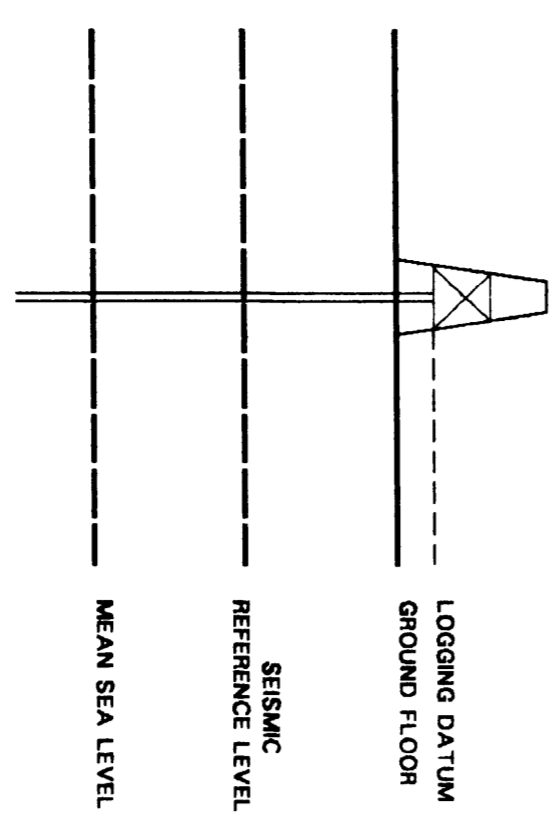
FIELD RECORDING: Engineer: ALBERT Location: GSA Program Version: 2.2

COMPUTATION: Analyst: R BLUNT Centre: ASJ Revision: 14.1

Logging Datum: 129 FT

Seismic Reference Datum: MSL

Ground Level: 115 FT



Total No. of Check Levels: 56 (from 500 to 425 ft below KB)

Velocity Log Depth Reference: SRD

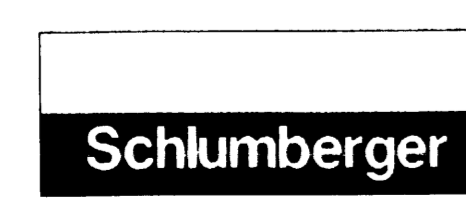
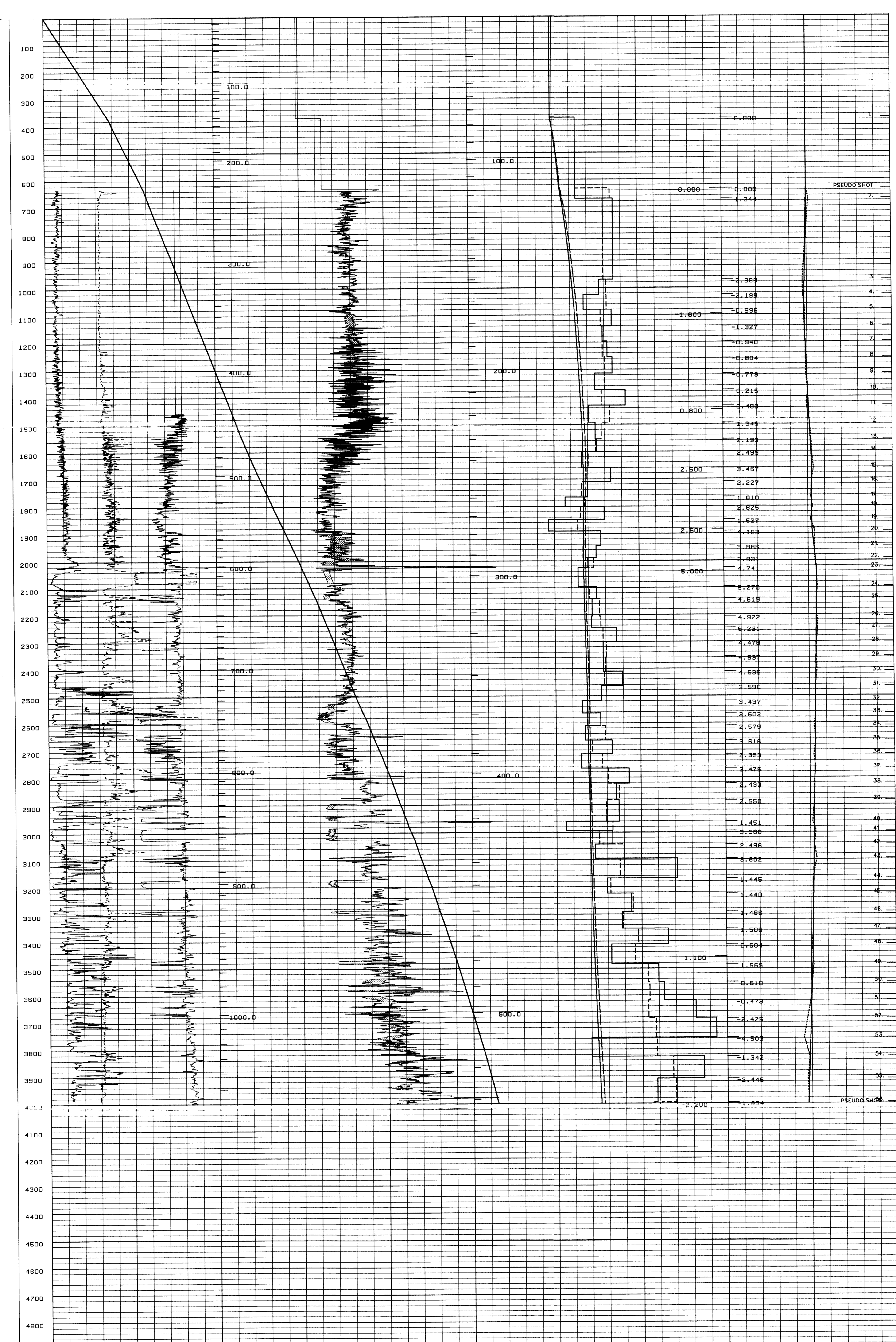
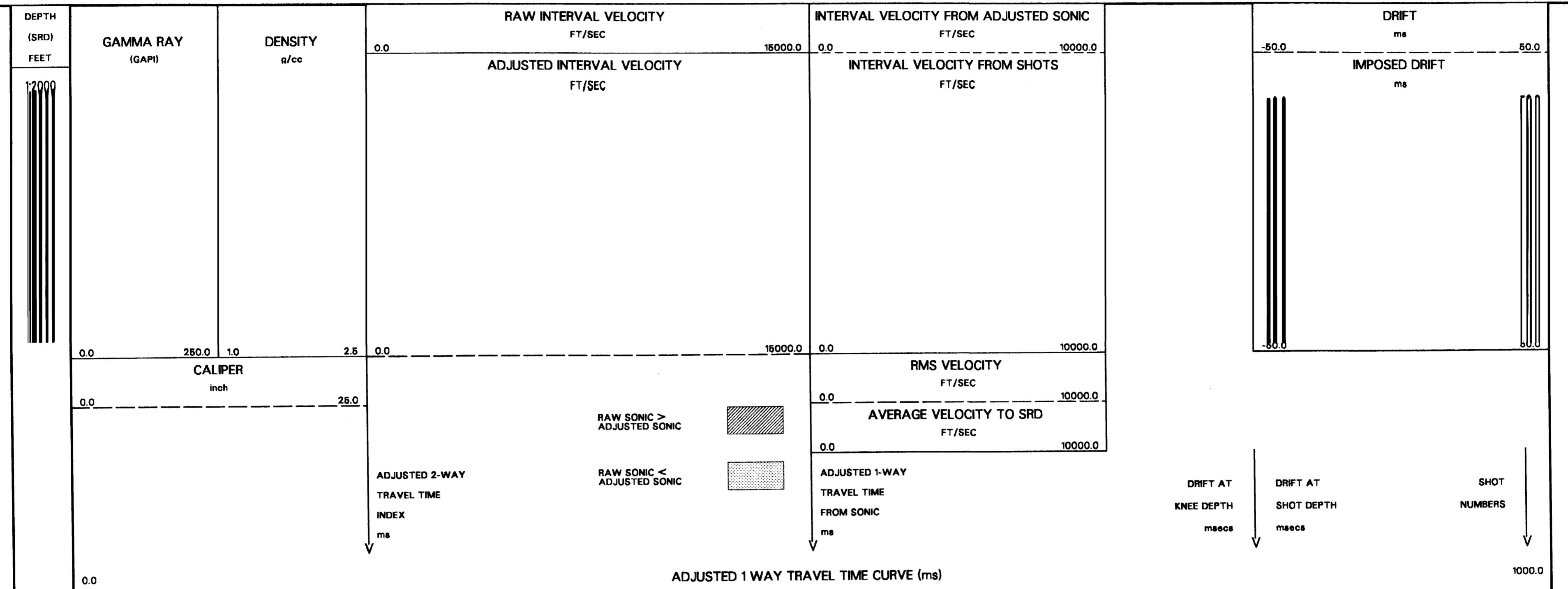
SRD	Date	Top	Type	BI Size	Depth	Clearing Size	Top	Bottom
1	07/11/85	BHC	LDL	7 7/8" @ 420 FT	8 8/8" @ 291 FT	8 8/8" @ 291 FT	0718 FT	4327 FT
	07/11/85	LDL		7 7/8" @ 420 FT	8 8/8" @ 291 FT	8 8/8" @ 291 FT	1900 FT	4300 FT
	07/11/85	SRD					884 FT below GL	884 FT below GL
							300"	300"

REMARKS

Sonic log interval 752 - 4130 feet below KB
SRD @ 884 ft below KB
Bottom shot @ 4125 feet below KB, drift extrapolated to TD

The well name, location and borehole reference data were furnished by the customer

All interpretations are opinions based on inferences from electrical or other measurements and we cannot, and do not guarantee the accuracy or correctness of any interpretations, and we shall not, except in the case of gross or willful negligence on our part, be liable or responsible for any loss, costs, damages or expenses incurred or sustained by anyone resulting from any interpretations made by any of our officers, agents or employees. These interpretations are also subject to Clause 4 of our General Terms and Conditions as set out in our current Price Schedule.



COMPANY HARTOGEN ENERGY LIMITED
FIELD WILDCAT
WELL BURONG - 1
COUNTRY AUSTRALIA