

# BHP Petroleum

Petrophysics Interpretation

Well : **MINERVA-2A**  
 Company : **BHP**  
 Field : **Minerva**  
 Permit : **Vic P31**  
 State : **Victoria**

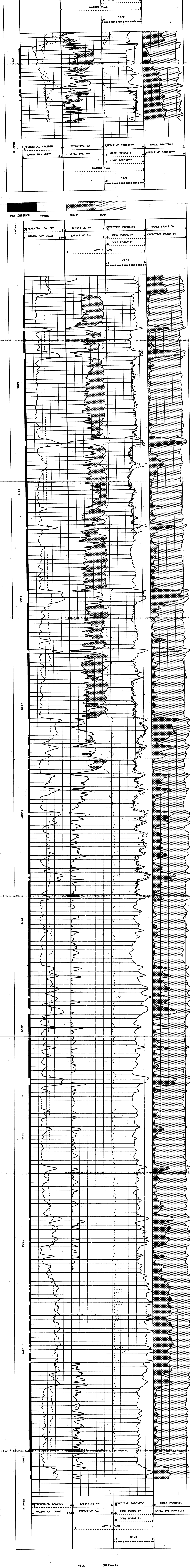
Location:  
 Owey Basin  
 Lat: 38° 43' 4.5"S Lon: 142° 57' 28.9"E  
 Scale 1 : 200

Parliament Datum N51 Elev: 0.9m  
 Loss measured from RT Ris: Bxford  
 Drilling measured from RT CL: -0.9m

Date Processed 09c 93  
 Date Logged 12 Oct 93

TOP Interval Interval 1719.0m  
 BO Interval Interval 2185.0m  
 Interd Node 1 8155  
 RW @ 25.000C 15.000  
 EQUV NDCI CONC. PPM 15.000  
 RMT @ 25.000C 0.070  
 EQUV NDCI CONC. PPM 100.000

Petrophysics List: N.J. HOLLAND



WELL : **MINERVA-2A**

SUMMARY OF RESULTS

CUT OFFS USED  
 Porosity >= 0.050  
 Water Sat >= 0.050  
 Water Saturation <= 0.900

ZONE	DEPTH HD	GROSS	NET	N/C	POR	SV	E.P.C. (%)	E.H.C. (%)
Shipwreck	1720.000 - 1740.000	20.0	10.0	50.	17.	31.	1.55	1.08
Shipwreck	1829.000 - 2105.000	276.0	253.9	92.	17.	58.	44.01	18.56
Shipwreck	1829.000 - 1840.000	111.0	97.9	88.	19.	15.	18.88	16.06

N.B. \*\*\* All thicknesses are calculated using data recorded along hole. \*\*\*